

VILLAGE OF MCFARLAND **School District/Village Board Joint** *NOTICE OF PUBLIC MEETING*
Planning Committee

Wednesday, May 31, 2023

4:00 PM

McFarland Municipal Center
Community Room

AGENDA

You are invited to this meeting through a Zoom webinar. The public may attend in-person or remotely through the webinar or telephone options listed below.

PLEASE CLICK THE LINK BELOW TO JOIN THE ZOOM WEBINAR:

<https://us02web.zoom.us/j/86805685319>

Or by Telephone: +1 (312) 626-6799

Webinar ID: 868 0568 5319

Press *9 to raise/lower hand. Press *6 to mute/unmute.

1. CALL TO ORDER, ROLL CALL.

2. PUBLIC APPEARANCES.

- a. This is an opportunity for members of the public to address the School District/Village Board Joint Planning Committee for items that are not on the agenda. Please remember this is a hybrid meeting conducted in person and through the Zoom online meeting platform. Meeting attendees wishing to address the Committee about items not on the agenda may do so at this time. Zoom attendees should type their name and address in the Question and Answer feature within the Zoom online meeting platform at this time. Members of the public who are present in person and wish to address the Committee should fill out a public comment form and turn into the meeting chairperson. When you are called upon to speak, state your name, address, and provide your comments to the Committee for their consideration. Please adhere to the 3-minute time limit. Additionally, you may send your public comments to village.clerk@mcfarland.wi.us to be included as part of the meeting.

Members of the public may also speak during their selected agenda item as they designate on the public comment form or in the Question and Answer feature on Zoom.

3. APPROVAL OF MINUTES.

- a. Motion to approve the minutes of the January 10, 2023 meeting.

4. BUSINESS.

- a. Discussion regarding the joint development of an Inclusive Playground at Waubesa Intermediate School.
- b. Discussion and update regarding the McFarland Municipal Center Master Plan.
- c. Discussion of topics of mutual interest and updates of local initiatives to the School District of McFarland and Village of McFarland.

5. SCHEDULE NEXT MEETING DATE.

- a. Tuesday, July 11, 2023 at 4:00 pm.

b. Tuesday, September 12, 2023 at 4:00 pm.

c. Tuesday, November 14, 2023 at 4:00 pm.

6. ADJOURNMENT.

Any person who has a qualifying disability as defined by the Americans with Disabilities Act that requires the meeting or materials at the meeting to be in an accessible location or format should contact the McFarland Municipal Center at (608)838-3153, 5915 Milwaukee Street, McFarland, Wisconsin, or village.clerk@mcfarland.wi.us by 2:00 p.m. at least 5 business days prior to the meeting so that any necessary arrangements can be made to accommodate each request. If the meeting or request is less than 5 business days from the meeting, requests for accommodations may still be made and reasonable efforts will be made to accommodate each request.

VILLAGE OF MCFARLAND

School District/Village Board Joint Planning Committee Minutes

Tuesday, January 10, 2023 - 4:00 PM

1. CALL TO ORDER, ROLL CALL.

Village President Clow called the regular meeting of the McFarland School District and Village Board Joint Committee to order at 4:00 pm in the Community Room of the McFarland Municipal Center.

Members Present: School - Craig Howery, Bruce Fischer, and Aaron Tarnutzer. Village - Carolyn Clow, Carrie Nelson, and Matt Schuenke

Village Board members not present: None.

Staff Present: None.

2. PUBLIC APPEARANCES.

This is an opportunity for members of the public to address the School District/Village Board Joint Planning Committee for items that are not on the agenda. Please remember this is a hybrid meeting conducted in person and through the Zoom online meeting platform. Meeting attendees wishing to address the Committee about items not on the agenda may do so at this time. Zoom attendees should type their name and address in the Question and Answer feature within the Zoom online meeting platform at this time. Members of the public who are present in person and wish to address the Committee should fill out a public comment form and turn into the meeting chairperson. When you are called upon to speak, state your name, address, and provide your comments to the Committee for their consideration. Please adhere to the 3-minute time limit. Additionally, you may send your public comments to village.clerk@mcfarland.wi.us to be included as part of the meeting.

Members of the public may also speak during their selected agenda item as they designate on the public comment form or in the Question and Answer feature on Zoom.

None.

3. APPROVAL OF MINUTES.

Discussion and action regarding the minutes of the September 13, 2022 meeting.

Motion by Clow, second by Nelson, to approve the minutes of the September 13, 2022 meeting. Motion carries 6 - 0 - 0 by acclamation.

4. BUSINESS.

Discussion and update regarding the McFarland Municipal Center Master Plan.

Schuenke provided an update on the Village's work to create a master plan for the Municipal Center Campus. The Public Safety Center is scheduled for completion in June and the planning work will help guide improvements to the facility upon their vacancy. The Library has been included within this planning as well as the Youth Center. Continuing to review proposed improvements against the need for capital improvements as well as the operational impacts. No action was taken on this item.

Discussion regarding the Village ratifying and approving a purchase agreement for

property located at or around 3454 Siggelkow Road (Parcel 0710-654-8341-1).

Clow provided an update that the School District and Village are moving forward with the purchase of land adjacent Siggelkow Road in order to construct a solar farm. The Village will own the land with the District leasing use of it to enter into an agreement with Alliant Energy to construct and maintain the solar farm. The lease and agreement terms are still being negotiated and are anticipated for completion later this Spring. No action was taken on this item.

c. Update and discussion from School District on Strategic Planning including Diversity, Equity, and Inclusion work.

Tarnutzer provided an update on the School District's efforts to complete a new Strategic Plan including Diversity, Equity, and Inclusion work. They have updated their mission and vision statements highlighting their shared commitment to inclusive belonging spaces, safety, creating partnerships, and review drafted pillars. Working on building out the action steps within this draft to date. No action was taken to date.

d. Discussion of topics of mutual interest and updates of local initiatives to the School District of McFarland and Village of McFarland.

The group discussed the Dane County sustainability/landfill campus project, updates on the Inclusive Park planning at WIS, upcoming presentation on the Power of Words, and communications.

5. SCHEDULE NEXT MEETING DATE.

- a. Tuesday, March 14, 2023 at 4:00 pm.
- b. Tuesday, May 9, 2023 at 4:00 pm.
- c. Tuesday, July 11, 2023 at 4:00 pm.
- d. Tuesday, September 12, 2023 at 4:00 pm.
- e. Tuesday, November 14, 2023 at 4:00 pm.

6. ADJOURNMENT.

Motion by Howery, second by Nelson, to adjourn at 5:04 pm.

Pursuant to law, written notice of this meeting was given to the public and posted on the public bulletin board in accordance with Open Meetings Law.

Respectfully submitted,
Matthew G. Schuenke
Village Administrator


VILLAGE OF
McFarland
SUMMARY SHEET

MEETING DATE: Wednesday, May 31, 2023

SECTION: Business

DEPARTMENT: Administration

CONTACT: Matt Schuenke, Village Administrator

AGENDA ITEM: Discussion regarding the joint development of an Inclusive Playground at Waubesa Intermediate School.

PREVIOUS ACTION:

This project was introduced to the joint committee at its meeting on May 10, 2022.

An update was provided to the joint committee at its meeting on September 13, 2022.

ISSUE SUMMARY:

Please find enclosed a proposal between the School District and Village to develop an inclusive park and supporting amenities at Waubesa Intermediate School. We have been working on it conceptually to break into two phase for more than a year now. The first phase would begin this Fall and be completed by the Spring with the second phase to finish the park slated for next Summer in time for school next year. The appendices include the conceptual site plan, plans for Phase 1, and the Village's plan from 2020 on the development of an inclusive park. Our objective will be to review the proposal and obligations between the parties before the process begins to formalize these elements within each of our two entities.

FINANCIAL/BUDGET IMPACT:

Phase 1 cost estimates will be provided in the meeting. The design for those elements are coming together with pricing attached as the improvements are more known at this time.

Pricing for Phase 2 will be provided within a range of estimates based on past planning for the improvements that remain. The last review of costs for the conceptual site plan suggested a total cost of \$2 million which has been our target to date.

VILLAGE PLAN REFERENCE:

None.

ORDINANCE REFERENCE:

None.

BOARD, COMMISSION OR COMMITTEE RECOMMENDATION:

Presented for discussion.

ATTACHMENTS:

1. District-Village WIS Inclusive Park Planning Outline 05262023 mgs
2. Appendix A - Site Plan



3. Appendix B - Phase 1(a)
4. Appendix C - Phase 1(b)
5. Appendix D - Inclusive Park Plan



www.mcfarland.wi.us | 5915 Milwaukee St, McFarland, WI 53558 | 608.838.3153

www.mcfarland.k12.wi.us | 5101 Farwell St, McFarland, WI 53558 | 608.838.4500

Memorandum

To: School Board for School District of McFarland
Village Board for Village of McFarland

From: Jeff Mahoney, Director of Business
Matthew G. Schuenke, Village Administrator

Date: May 25, 2023

Re: Proposal for the Development of an Inclusive Park at Waubesa Intermediate School

Executive Summary

The District and Village are interested in developing an inclusive park at Waubesa Intermediate School. Please see Appendix A for the updated conceptual site plan outlining various aspects of the improvements proposed. The park when complete would better support curriculum, recreation, athletics, and the Community at large while serving a broader demographic. This work is guided by Village planning efforts from 2020 for a new inclusive playground within the system and desires by the District to improve their amenities. This memorandum is meant to provide background and serve as a guide for how the project is to be implemented in partnership between the two entities.

Project Phases

Phase 1

- (a) Facility – The District will be responsible to construct a facility that supports both their softball program and also the adjoining park to be constructed. This facility will provide restrooms, covered shelter, concessions, and outdoor seating. The project will need to also address associated landscaping and site work around the facility as well as tie into the utilities to support it. A draft conceptual layout of the floor plan is attached as Appendix B.

- (b) Site Development/Utilities – The Village will be responsible for site development and utilities in order to provide access to the proposed facility. Site development will consist of new driveway access, accessible parking, driveway/pedestrian access. Utilities will consist of new laterals for water and sanitary sewer to the facility, and associated stormwater management that is needed to control/treat runoff. The design and specifications for this work is included within Appendix C. Construction is being pursued via a change order to an existing Village street construction project already awarded for this construction cycle.

Phase 2

The current playground to support school curriculum is original to the facility constructed in 1999 and in need of replacement. The current location of both hard surface area and current playground would be shifted to the southeast of the existing facility.

The Village completed a plan in 2020 to develop an inclusive park at nearby Cedar Ridge Park (Appendix D). Development of the inclusive park at this location to address both objectives was considered mutually beneficial to both entities. The work then identified in Phase 2 would reconstruct the playground, swing amenities, and introduce new elements identified within the Village plans. Planning on the development of these amenities would be completed by School Staff, Village Staff, Village Committee, and public input where applicable.

Additionally, the reconstruction of the WIS athletic field would need to be updated to accommodate more sports, less down time for grass growth, and meet stormwater needs. This field will be needed to support district athletics, community recreation, and school activities but also available to the public for use as part of the larger park redevelopment. In order to meet all of these objectives to encompass all of these uses it will need to be constructed as a synthetic surface similar to what is constructed at the High School.

Once planning is complete, the design process will be commissioned for bidding to be constructed next Summer prior to the start of the next school year.

Timeline

There are tasks in the short term that are more finite and other activities in the long term that are more of an estimate. A timeline on moving forward is summarized as follows:

May 31st – Joint Village School District/Board Planning Committee

- Discussion on this memorandum.
- Objective is to gain informal consensus from both entities present to move forward on approval of this memorandum by our respective boards.

June 6th – Village Parks and Recreation Committee

- Discussion/action to make a recommendation on this memorandum.
- Discussion/action to make a recommendation on the change order to construct Phase 1(b).
- Discussion/action to make a recommendation on the proposal for planning, design, and bidding services for Phase 2.

June 13th – Village Board

- Approval on this memorandum.
- Approval on the change order to construct Phase 1(b).
- Approval on proposal for planning, design, and bidding services for Phase 2.

June 26th – School Board

- Approval on this memorandum.
- Review and/or approval on the proposal to construct Phase 1(a).

July 17th – School Board

- Approval on the proposal to construct Phase 1(a) (as needed).

July 18th – Plan Commission

- Phase 1 Site/Design Approval
- Deadline for Application is June 6th.

August 1st – Village Parks and Recreation Committee

- Phase 2 Project Kick Off

September 1st – Phase 1 Construction

- Commence both phases.
- Phase 1(a) to be completed by March of 2024.
- Phase 1(b) to be completed by November of 2023.

Phase 2 General Schedule

Aug-Oct – Planning

Nov-Jan – Design

Feb-Mar – Bidding/Contracting

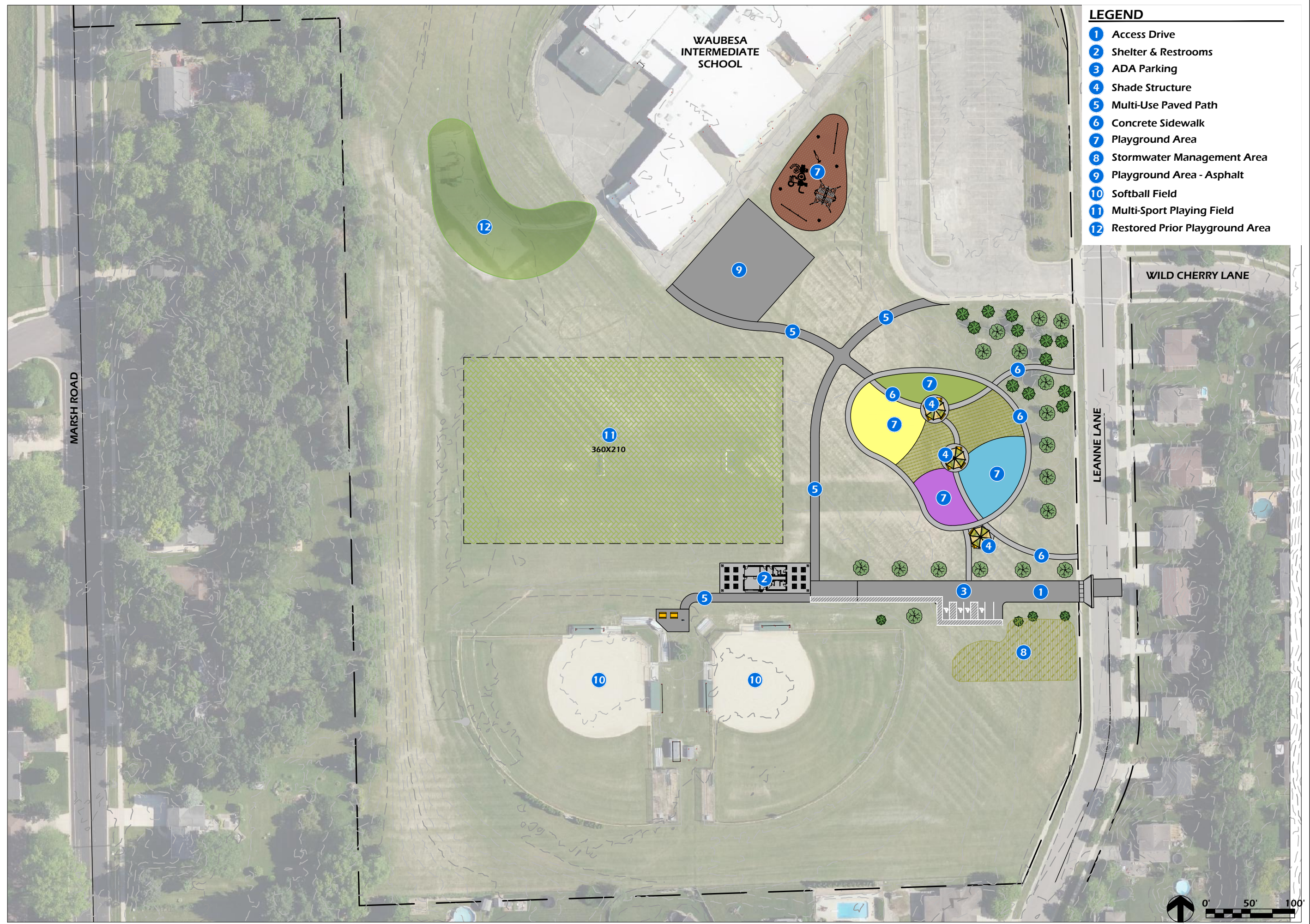
May-Aug – Construction

Conclusion

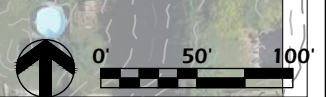
This project creates a unique opportunity for two entities serving roughly the same Community while making a larger impact than either originally intended. As such, there is no definitive road map for its acceptance and implementation. The steps outlined within the timeline are meant to at least roughly serve as a guide and this memorandum as a proposal on how we jointly move forward together. That requires working together to advance elements of the project and individually to fulfill our obligations. There will be different checkpoints along the way as well as moments in which we need to be flexible to reach our objectives and ensure a successful project.

Exhibits

Appendix A	Conceptual Site Plan
Appendix B	Phase 1(a) – Conceptual Facility Floor Plan
Appendix C	Phase 1(b) – Site Development/Utilities Design and Specifications
Appendix D	Inclusive Park Plan



- LEGEND**
- 1 Access Drive
 - 2 Shelter & Restrooms
 - 3 ADA Parking
 - 4 Shade Structure
 - 5 Multi-Use Paved Path
 - 6 Concrete Sidewalk
 - 7 Playground Area
 - 8 Stormwater Management Area
 - 9 Playground Area - Asphalt
 - 10 Softball Field
 - 11 Multi-Sport Playing Field
 - 12 Restored Prior Playground Area



WAUBESA INTERMEDIATE SCHOOL PHASE 1

**5605 RED OAK TRAIL
 MCFARLAND, WI**

CONCEPT PLAN #1

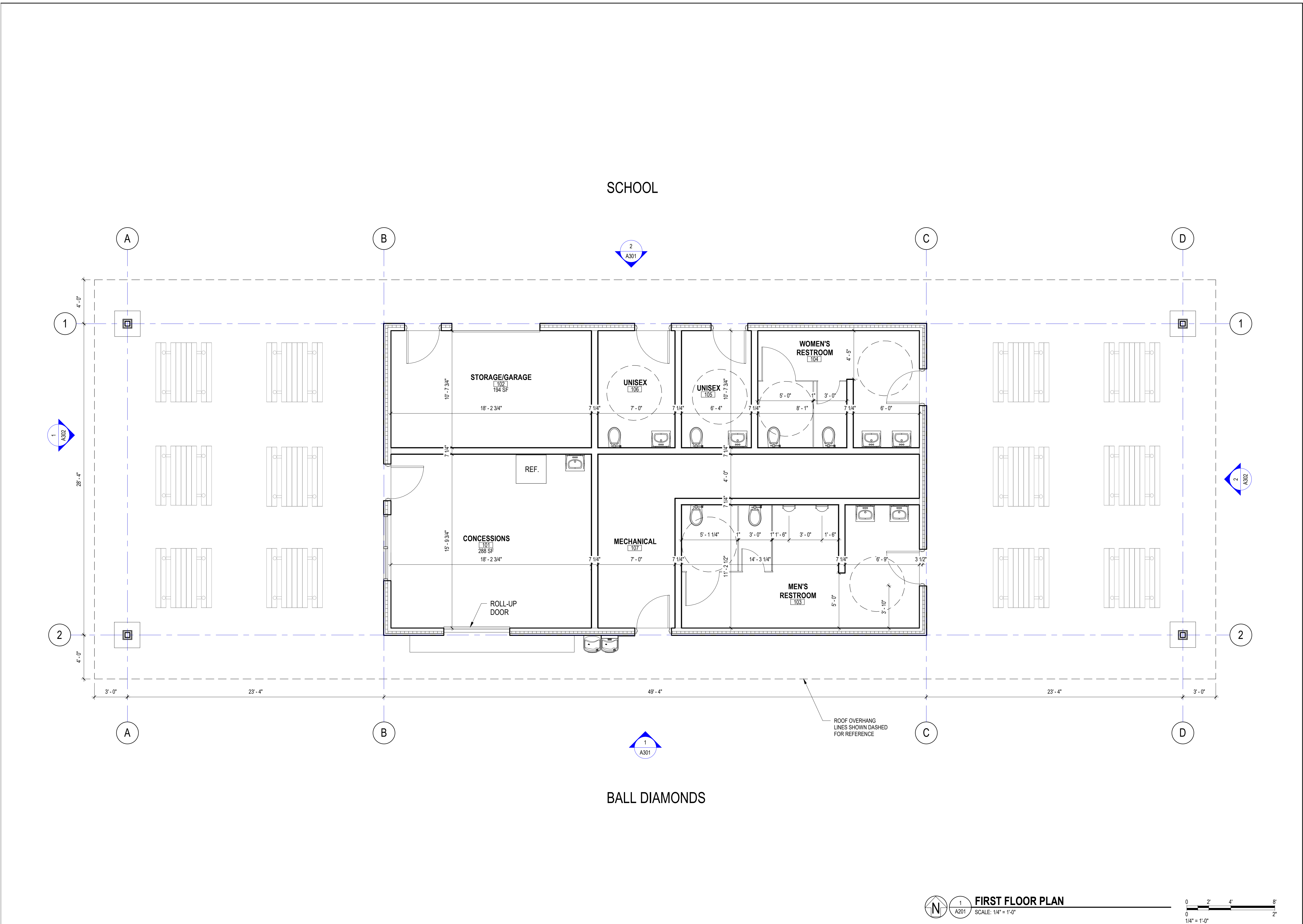
Project Name:

Revisions:

Project #: 23.007
 Issued For: Review
 Date: 05/9/2023

Sheet Number

C100



SCHOOL

BALL DIAMONDS

PARKITECTURE + PLANNING
 901 Demping Way, Suite 102
 Madison, WI 53717
 608.886.6808
 parkitecture.com

ICONICA
 1411 Combig Way / Jackson, WI 53127
 608.886.6808
 iconica.com

Project Name: **WAUBESA INTERMEDIATE PARK SHELTER MCFARLAND, WI**

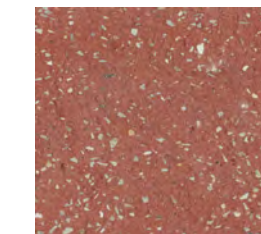
Sheet Title: **FIRST FLOOR PLAN**

Issue	Description	Date

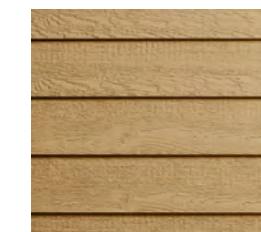
Project #: 20230300
 Issue: -
 Date: 05/22/2023

Sheet Number: **A201**

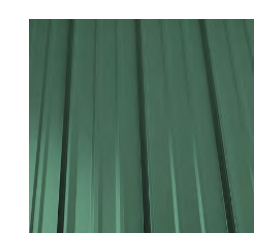
FIRST FLOOR PLAN
 SCALE: 1/4" = 1'-0"
 0 2' 4' 8'
 1/4" = 1'-0"



CMU BASE & CAST STONE SILL
 COUNTY MATERIALS AUTUMN RED,
 18-124A



LP SMARTSIDE
 HARVEST HONEY



METAL ROOF
 STANDING SEAM, COLOR:
 GREEN

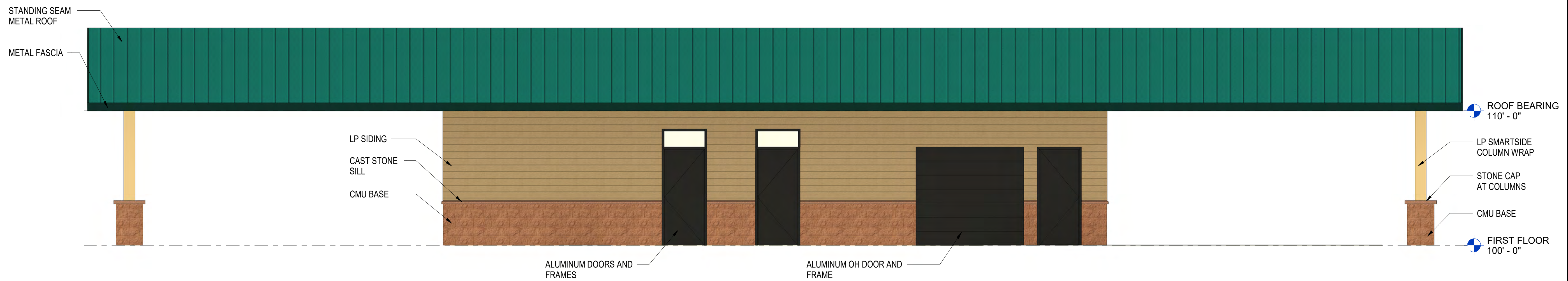


ANODIZED ALUMINUM
 KAWNEER, COLOR:TBD

**PARKITECTURE
 + PLANNING**
 901 Deering Way, Suite 102
 Madison, WI 53717
 608.886.6808



ICONICA
 901 Deering Way, Suite 102
 Madison, WI 53717
 608.886.6808

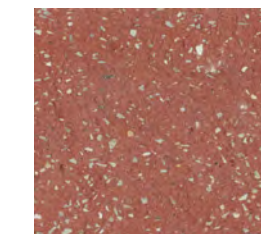


Project Name: **WAUBESA INTERMEDIATE
 PARK SHELTER
 MCFARLAND, WI**
 Sheet Title: **BUILDING ELEVATIONS**

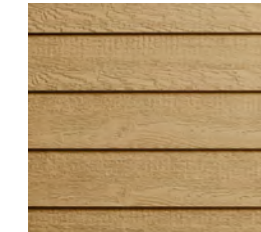
Issue	Description	Date

Project #: 20230300
 Issue: -
 Date: 05/22/2023

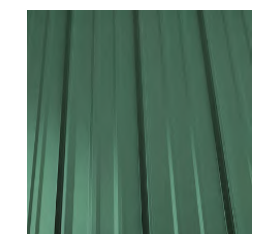
Sheet Number
A301



CMU BASE & CAST STONE SILL
COUNTY MATERIALS AUTUMN RED,
18-124A



LP SMARTSIDE
HARVEST HONEY



METAL ROOF
STANDING SEAM, COLOR:
GREEN

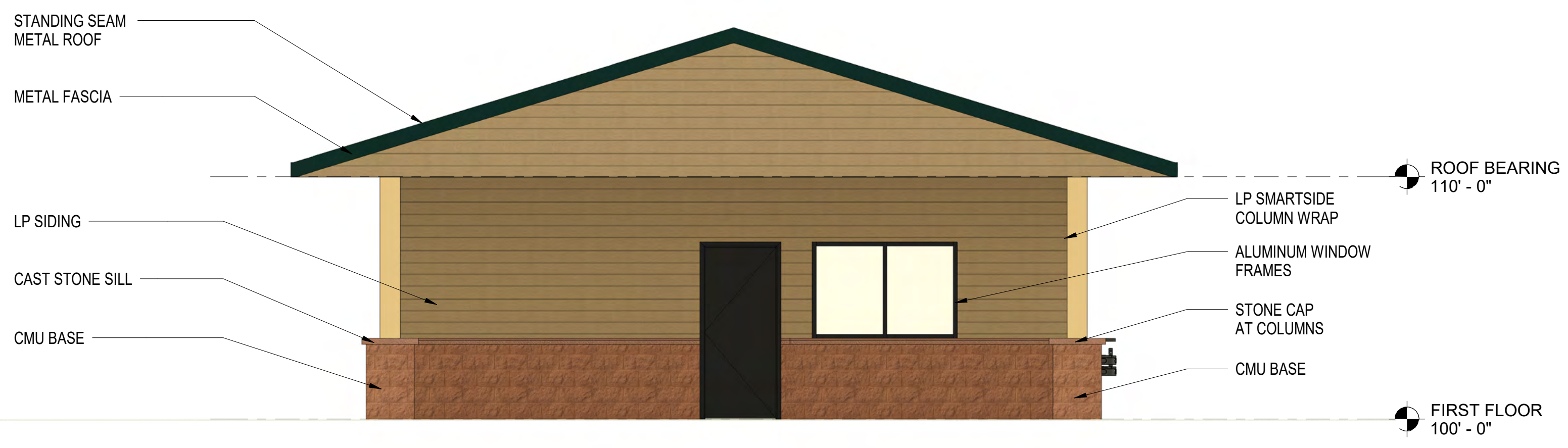


ANODIZED ALUMINUM
KAWNEER, COLOR:TBD

**PARKITECTURE
+ PLANNING**
901 Deering Way, Suite 102
Madison, WI 53717
608.886.6808



ICONICA
901 Combig Way / Madison, WI 53717
PH: 608.261.4510 / Fax: 608.261.4515
www.iconicadesign.com



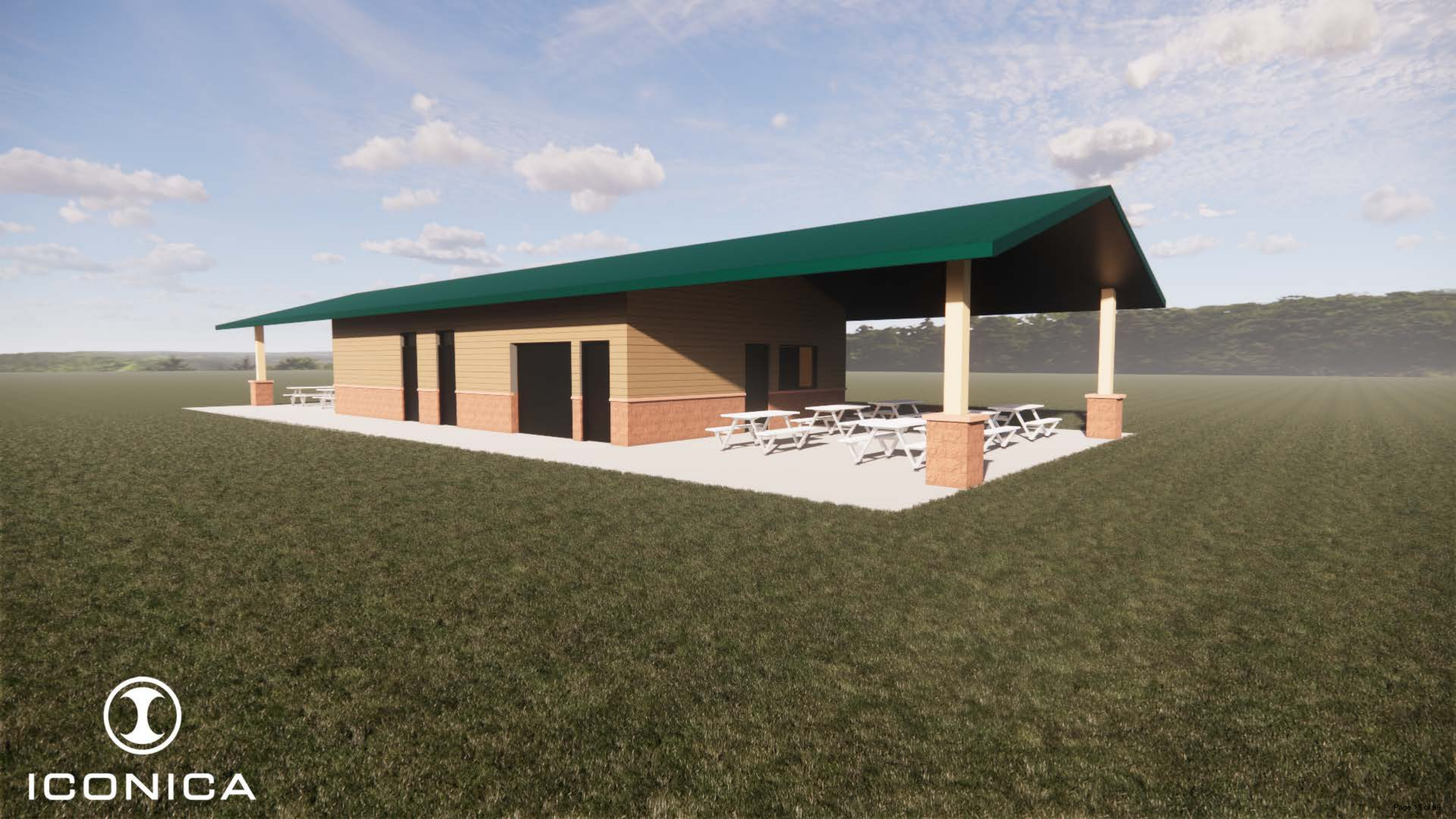
Project Name: **WAUBESA INTERMEDIATE
PARK SHELTER
MCFARLAND, WI**

Sheet Title: **BUILDING ELEVATIONS**

Issue	Description	Date

Project #: 20230300
Issue: -
Date: 05/22/2023

Sheet Number
A302

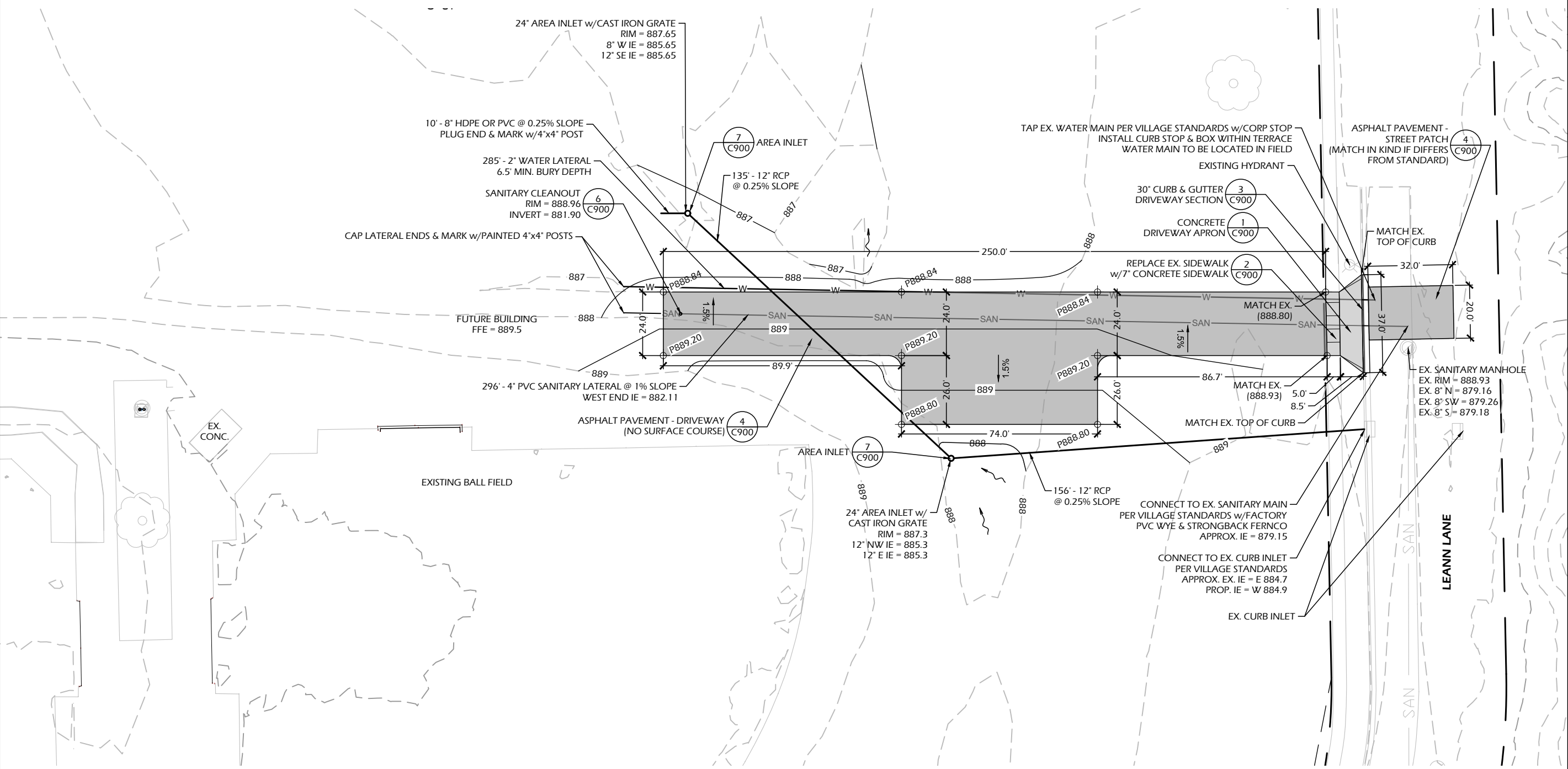


ICONICA



File: V:\23.007 McFarland Waubesa Phase 1\CAD\1-P-SP.dwg Layout: C200 User: bluem Plotted: Apr 27, 2023 - 8:28pm

- SITE LAYOUT NOTES**
- CONTACT DIGGER'S HOTLINE 5 WORKING DAYS PRIOR TO THE START OF CONSTRUCTION.
 - ALL PROPOSED DIMENSIONS ARE REFERENCED PARALLEL OR PERPENDICULAR TO THE PROPOSED FEATURES SHOWN. WRITTEN DIMENSIONS SUPERSEDE ANY SCALED DIMENSIONS.
 - PROPOSED GRADE AND LEVEL SHALL BE PERIODICALLY REVIEWED IN THE FIELD BY THE OWNER OR A/E.
 - SEED, FERTILIZE, AND CRIMP MULCH ALL GENERAL LANDSCAPE AREAS DISTURBED DURING CONSTRUCTION IN ACCORDANCE WITH THE SPECIFICATIONS EXCEPT THOSE AREAS INDICATING OTHERWISE. THIS SHALL INCLUDE ANY AREAS OUTSIDE OF THE PROJECT LIMITS THAT ARE DISTURBED BY CONTRACTOR ACTIVITY.
 - ANY EXISTING STRUCTURES AND/OR UTILITIES NOT SHOWN ON THESE DOCUMENTS WHICH NEED TO BE REMOVED, RELOCATED, AND OR ADJUSTED SHALL BE THE RESPONSIBILITY OF THE SITE CONTRACTOR AND INCLUDED IN THE BASE BID.
 - CONTRACTOR SHALL BE RESPONSIBLE FOR SITE STAKING. DIGITAL PLAN FILES MAY BE AVAILABLE FROM THE A/E.



WAUBESA INTERMEDIATE SCHOOL PHASE 1
5605 RED OAK TRAIL
McFARLAND, WI

Project Name:

Revisions:

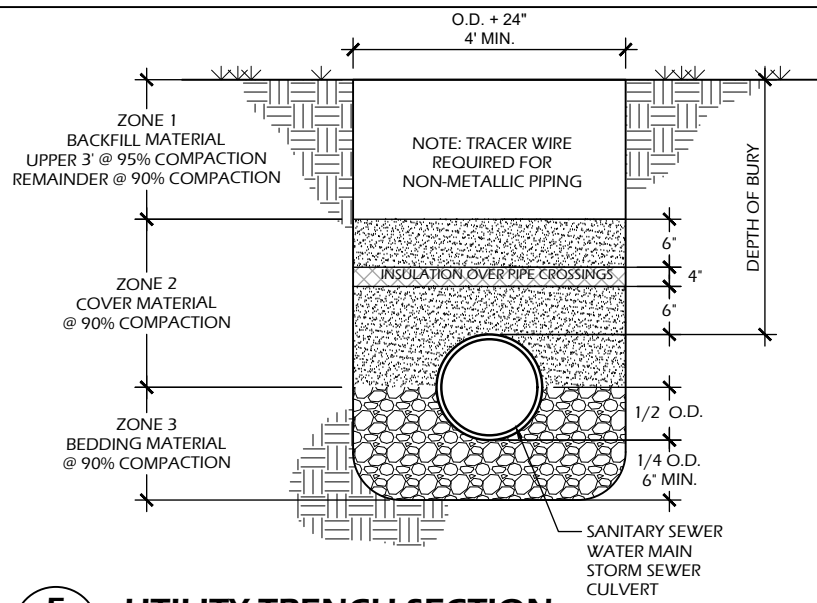
Project #: 23.007
 Issued For: Review
 Date: 04/26/2023

Sheet Number
C200

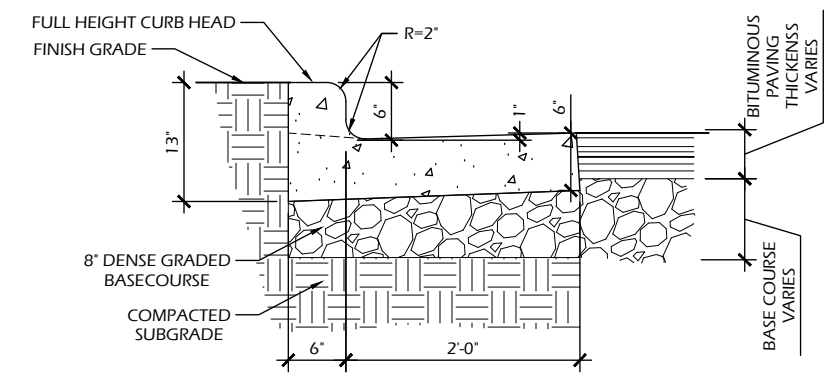
SITE LAYOUT & GRADING PLAN

Sheet Title:

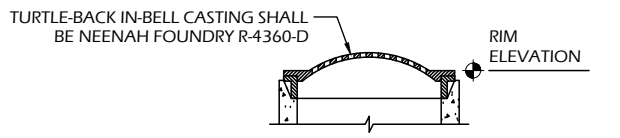
File: V:\23.007 McFarland Waubesa Phase 1\CAD\P-D.dwg Layout: C900 User: bluem Plotted: Apr 27, 2023 - 8:29pm



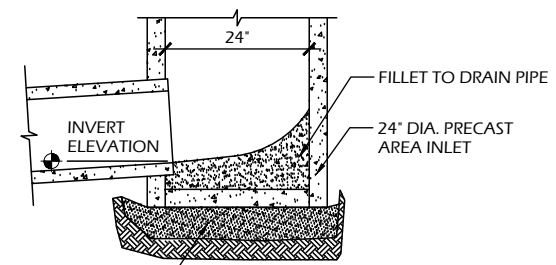
5 UTILITY TRENCH SECTION
 C900 SCALE: NTS



3 30" CURB & GUTTER
 C900 SCALE: NTS



AREA INLET WITH TURTLE-BACK CASTING



AREA INLET BOTTOM SECTION

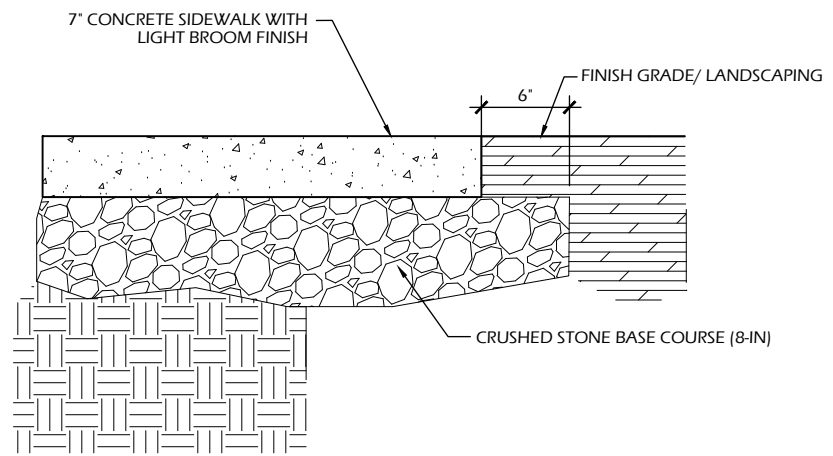
7 AREA INLET
 C900 SCALE: NTS

ASPHALT PAVEMENT TYPICAL SECTION - LOCAL STREET PATCH

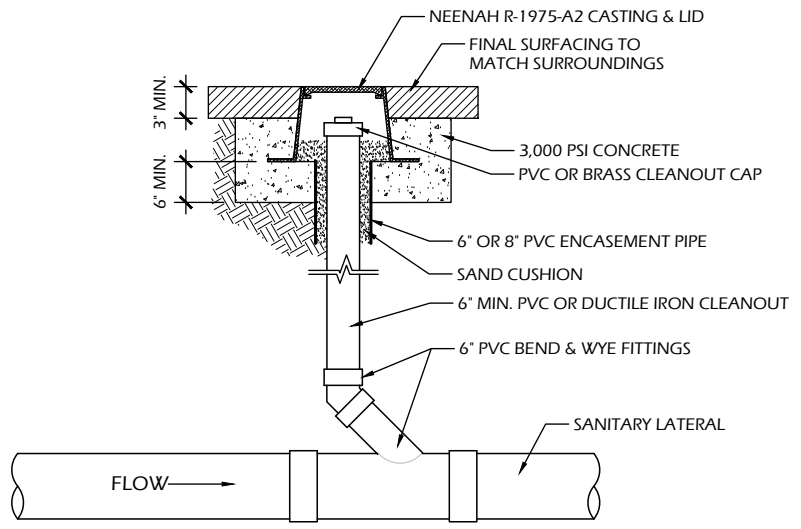
	MATERIAL	MATERIAL THICKNESS (INCHES)	PAVEMENT TYPE (WISDOT)
A	BITUMINOUS UPPER LAYER	1.5	5 LT 58-28 S
B	BITUMINOUS LOWER LAYER	1.75	4 LT 58-28 S
C	3/4 IN CRUSHED AGGREGATE BASE COURSE	6.0	
D	3 IN BREAKER RUN BASE COURSE	12.0	
TOTAL THICKNESS (INCHES)		21.25	

ASPHALT PAVEMENT TYPICAL SECTION - DRIVEWAY

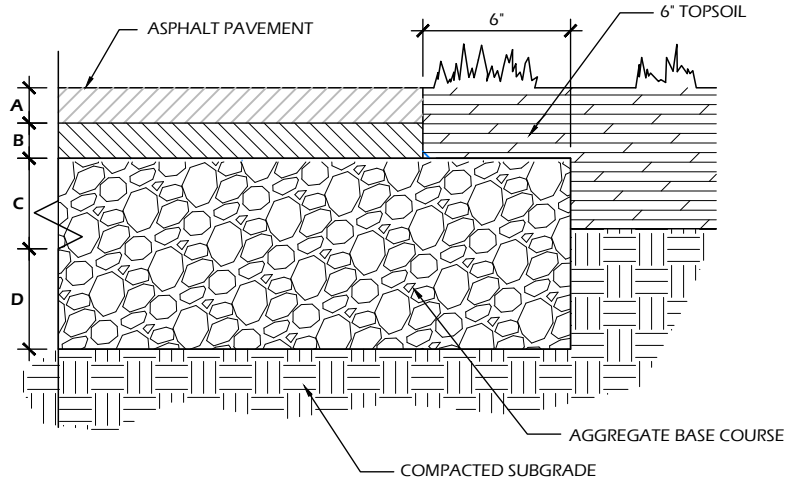
	MATERIAL	MATERIAL THICKNESS (INCHES)	PAVEMENT TYPE (WISDOT)
A	BITUMINOUS UPPER LAYER (FUTURE)	1.5	5 LT 58-28 S
B	BITUMINOUS LOWER LAYER	2.25	4 LT 58-28 S
C	3/4 IN CRUSHED AGGREGATE BASE COURSE	6.0	
D	3 IN BREAKER RUN BASE COURSE	12.0	
TOTAL THICKNESS (INCHES)		21.75	



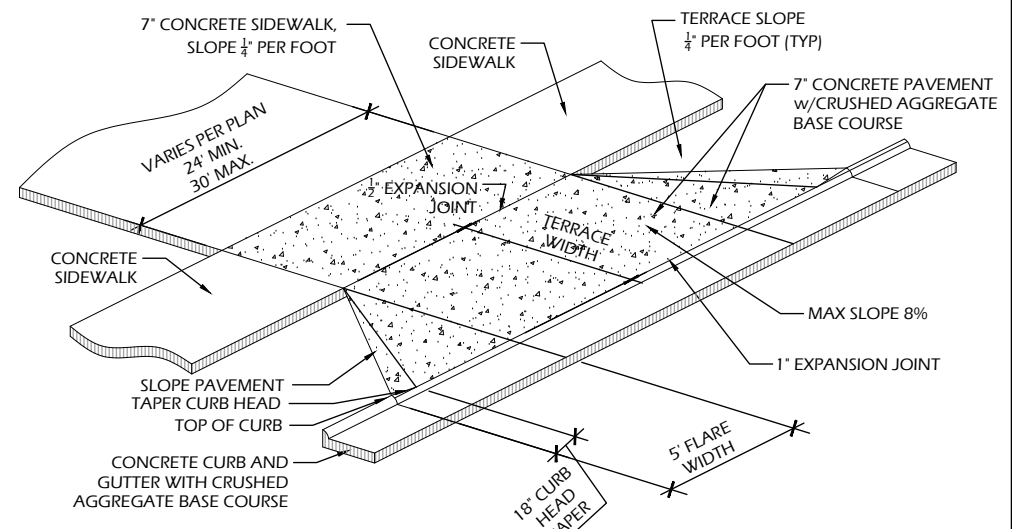
2 CONCRETE PAVEMENT
 C900 SCALE: NTS



6 SANITARY CLEANOUT
 C900 SCALE: NTS



4 ASPHALT PAVEMENT
 C900 SCALE: NTS



1 DRIVEWAY APRON
 C900 SCALE: NTS



Village of McFarland Inclusive Playground Master Plan

Final Report

Prepared By:
Learning Landscapes Design LLC
262.707.8004
12/14/20



TABLE OF CONTENTS

Introduction.....	4
Background Review and Site Inventory.....	5
Site Development Discussion.....	15
Design Approach Options.....	17
Community Involvement.....	23
Concept Design.....	24
Appendix A: Special Needs Playground Survey.....	34
Appendix B: Special Needs Playground Survey Results.....	37

Partnerships:

Village of McFarland

CoreTeam:

Matt Schuenke
Jim Hessling
Sayer Larson
Andrew Bremer
Heidi Wisniewski
Melissa Wiswell
Rachel Jones

Parks, Recreation, and Nature Resource Committee:

Carolyn Clow
Clair Utter
John Feldner
Chuck Rolfsmeyer
Katharine Pease
Darrel Waldera
David Wilson
Andy Jakubowski
Sarah Kuba
Dan Kolk

Kerry White

Project Manager, Learning Landscapes Design

Mara Kaplan

Inclusive Play Specialist, Let Kids Play

Introduction

The Village of McFarland's diverse system of parks and open space exemplifies the inviting, dynamic, and diverse nature of the community. Open spaces range from small tot lots, neighborhood parks, community parks to conservancy areas. All which offer a variety of different recreational opportunities. As the Village continues to grow the McFarland Park System continuously strives to improve the quality of life of their community through nature connections and park improvements. Through planning efforts and community surveys the Village has identified the need for an all accessible and all inclusive playground within their community. Currently there is no playground within the park system that is solely dedicated to this purpose.

Through a competitive proposal process the Village hired Learning Landscapes Design and sub-consultant Let Kid's Play! to complete the planning services for an inclusive park. An inclusive playscape addresses the needs of all people including those who have autism, intellectual disabilities, hearing impairments, cerebral palsy, spina bifida, and other disabilities. It also addresses the needs of typical children. An inclusive playground accommodates everyone and challenges them at their own developmental level. Learning Landscapes Design is a landscape architecture firm that strives to create spaces for people of all ages and abilities to play, interact, and learn by putting children and their families at the center of the community and building amenities that attract them and meet their play and learning needs at any level.

This report covers the tasks and outcomes from the planning process. Each task is described in further detail throughout the body of this report. The execution of some of the tasks were modified from those outlined in the original proposal in order to meet healthy and safety recommendations related to Covid-19. The planning services are as follows:

- Meet with Village Staff (digitally) to review current conditions and existing amenities or site constraints, and receive direction regarding site-specific requirement.
- Background review and site inventory.
- Evaluate up to three potential locations within the current parks system that could allow for the development of the improvements generated through the meeting and public input process.
- Prepare and conduct public input efforts in order to solicit viewpoints from the community on the improvements.
- Work with Village Staff and the Parks Committee to inventory the extent of park development and amenities desired for the project.
- Prepare conceptual plans for discussion, review, and presentation.
- Generate plans for implementation of the project.
- Prepare final report including renderings and a cost estimate.

A CORE team was assembled to attend meeting, participate in planning discussions, and make design decisions. The CORE team consists (4) Village of McFarland Parks and Rec staff members and (3) community members who have experience working with children of varying ability either personally or within the McFarland school district.



Background Review and Site Inventory

Learning Landscapes Design team visited 15 public playgrounds within the Village of McFarland's park system to identify play or accessibility gaps and opportunities. Additionally, three inclusive playground within the Madison Metropolitan area were reviewed to provide examples of inclusive playgrounds within the surrounding communities. Each playground's accessibility was evaluated based on the Guide to ADA Accessibility Guidelines for Play Areas and Learning Landscapes Design's professional judgment and experience in designing inclusive playgrounds. We evaluated each park on the following criteria:

1) Access to the Playground

- Are there designated accessible parking spaces available?
- Is there an accessible route to get to the playground?
- Does the playground contain inclusive play surfacing? This includes unitary surfacing such as pour-in-place rubber, rubber tiles, or artificial turf.

2) Site Support Features

- Is there an accessible restroom?
- Are there accessible furnishings?
- Is the play area fenced in?

3) Playground Components

- Types of ground level components
- Is access to the playground equipment by ramp or by transfer station?
- What are the best inclusive features offered at the playground?

4) Types of Play

- What types of play are offered?

In addition to the criteria listed above, we provided a descriptions of each playground and a few small scale recommendations on how to improve the accessibility of each playground. All of this information was put together in a matrix in order to compare and understand the accessibility needs of each individual park and the park system as a whole. See the following pages for a map of the McFarland parks and open spaces, the inventory matrix, and images of each of the existing playground sites.

Through this exercise we were able to identify a few keys accessibility and inclusive design gaps within the current park system. Those gaps and recommended playground elements include:

- Loose Parts or Constructive Play area - Loose Parts are simple movable objects that are open ended in their use and form. These types of materials allow children to move, manipulate, and control objects and materials through play. A great example of loose parts play includes sticks, stumps, limbs, wood planks, and tree cookies for children to build forts or set up imaginative play elements like a market or house.
- Planting - Planting areas provide rich opportunities for sensory input, imaginative play, and education. Planting area allows children to run their hands through many textures or listen to the different sounds the plants make on a windy day. Appropriate planting areas spark children's imaginations. Are they pioneers exploring a new land or pretending to be picking ingredients for a salad? Planting areas provide opportunities to observe birds, bees, and bugs in their natural environment.

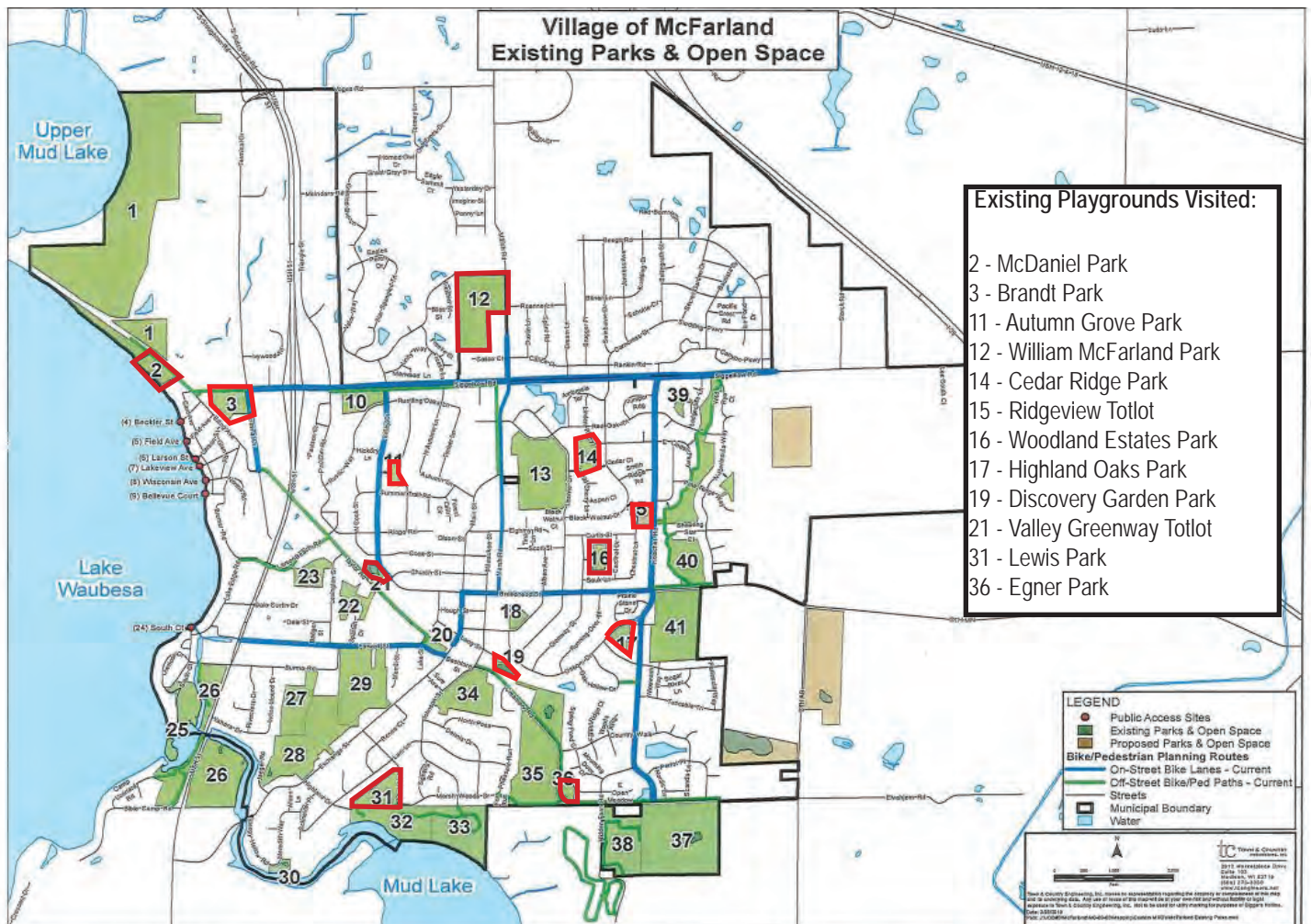


- Natural Elements - Natural elements include logs, boulders, planting areas, and wood components. When children are exposed to natural elements they tend to focus more on the task at hand. For example when climbing a boulder mound the experience is different every time. A child needs to be more deliberate and cognizant of their hand and foot placement. Natural elements provide a connection to nature with varying textures that evolve and change over time.
- Non-Prescribed Elements - These are play elements that are open-ended, meaning there is no defined way to interact with the component. A series of logs and boulders for example can become an obstacle course, a space to perch and gather with friends, a balancing exercise, or a climbing challenge.
- Water Play - Water's dynamic nature makes it an excellent sensory experience and captives uses of all ages and abilities. When paired with a hand pump and elevated water channels users are able to control the amount of water available and can manipulate the course of the water running down the channels.



Map of McFarland Parks

Below is a map of the parks and open spaces within the Village of McFarland. All sites visited are highlighted in red.



Village of McFarland - Inclusive Playground
Level of Service Inventory

Village of McFarland Parks

Park	Playground Description	Access to the Playground			Site Support Features			Playground Components			Type of Play	How to Improve the Site
		Accessible Parking	Accessible route to playground	Inclusive Play Surfacing	Accessible Restroom	Accessible Furnishings	Fenced Play Area	Types of Ground Level Components	Access by Transfer or Ramp	Best Inclusive Features	Variety of play types offered	
Autumn Grove Park	One play structure with multiple climbing options, tunnel, bridge, and slides. Additional components include a bending balancing beam, four swings (two belt swings and two bucket swings) and sand digging area.	● Street Parking, no designated ADA parking	● No Path	● Wood Chips	● No Restroom Facility	● (2) Benches with backs located within chips area	● No	● (3) Sand diggers, swings, balancing beam (none accessible)	(1) Transfer Station, access to entire structure	Sand digging area, Access Ramp	Majority physical play with sensory play in the sand digging area and musical panel.	Provide a paved path to the playground ramp and sand digging area from the road. Add an accessible sand digger. Add an accessible swing in a new location along an accessible path.
Brandt Park	One play structure with multiple climbing options and slides and sand digging area.	● Street Parking with designated ADA parking	● Path is paved but not accessible	● Wood Chips	● Yes	● None	● Fenced along road side and residential side	● (4) music panel, stools, steering wheel, and sand diggers (none accessible)	(1) Transfer Station, access to one slide	Sand digging area, Access Ramp	Majority physical play with sensory play in the sand digging area and musical panel.	Providing a fully accessible pathway to the playground is going to be difficult with the existing grading. Instead focus on providing a wider range of play by adding a spinner and more imaginative play elements.
Cedar Ridge Park	One small play structure with bridge, overhead bars, and a double slide. Additional components include a spring rocker, four swings (two belt swings and two bucket swings), a net climbing wall, overhead rings, and sand digging area	● Street Parking, no designated ADA parking	● No Path, however the play area is very close to the existing path and could be easily connected	● Wood Chips	● No Restroom Facility	● (1) Bench with backs located within grass	● No, Private residential fences on one side	● (2) Spring rocker and sand diggers (none accessible)	(1) Transfer Station, access to double slide	Sand digging area	Mostly physical play with sensory play in the sand digging area	This playground is a good candidate for complete replacement. If replacement is not an options, consider adding a short access path to the playground. There is a lot of underutilized play scape, add accessible ground level components like spinners, balancing bar, and steppers
Discovery Garden Park	One rope climbing structure with slide. Additional components include a camp themed climbing area with log steppers and a grass play mound	● Parking Lot with designated ADA parking	● Yes	● Pour-In-Place Rubber	● Yes, access to restrooms in library during business hours	● (5) Benches with backs and armrest on accessible route ● (2) non-ADA picnic tables on a non-accessible route	● No	● (5) Log climber, log steppers, climbing tent, lowest hammock of rope climber, grassy play hill (all accessible)	(0) No transfer stations or ramps	Surfacing, Grassy Play Hill, Camp Theme Climbing Area, Rope Climber Hammock	Physical Play and Imaginative Play	This is a great play space! A couple minor improvements include adding a couple musical instruments for sensory play and providing at least one ADA picnic table with paved access.
Egner Park	Two playground structures. The larger structure has hex cube climbers with slide, stepping pads, and overhead bars. The smaller structure has three short slides, a climbing net, and overhead bars. Additional components include, seesaw, standup spinner, and 5 swings (two belt swings, one ada swing, one double-occupancy swing, and one bucket swing)	● Street Parking, no designated ADA parking	● No Path	● Wood Chips	● No Restroom Facility	● None	● No	● (5) Seesaw, stepping pads, stand up spinner, accessible swing, bottom hex cubes (none accessible)	Larger Structure: (0) Transfer Stations, Smaller Structure: (1) Transfer Station	Spring SeeSaw, ADA swing,	All Physical Play	This playground could be a great accessible play space with a few key improvements. Add an accessible path to the play area from the main pathway. Consider a pour-in-place rubber path to the ground level components. Replace the stairs on the smaller structure with an accessible ramp. To increase access to the park, parking stalls could be added along Creamery Rd. Provide accessible picnic tables under the overhang and accessible benches with backs throughout. Good park to prioritize site improvements.

Legend: ● = most inclusive, ● = somewhat inclusive, ● = least inclusive * Ratings are based on professional judgement

Village of McFarland - Inclusive Playground
Level of Service Inventory

Village of McFarland Parks

Park	Playground Description	Access to the Playground			Site Support Features			Playground Components			Type of Play	How to Improve the Site
		Accessible Parking	Accessible route to playground	Inclusive Play Surfacing	Accessible Restroom	Accessible Furnishings	Fenced Play Area	Types of Ground Level Components	Access by Transfer or Ramp	Best Inclusive Features	Variety of play types offered	
Highland Oaks Park	One play structure with multiple climbing options, overhead bars, and slides. Additional components include 4 swings (two belt swings, two bucket swings), 2 spring rockers, a sand digging area with diggers.	● Street Parking, no designated ADA parking	● Yes	● Wood Chips	● No Restroom Facility	● (2) Accessible bench with back	● No	● (2) spring rockers and sand diggers (1 digger is accessible)	(1) Transfer Station, access to entire structure	Accessible digger, paved access to the playground	Mostly physical play with sensory play in the digging area	Add a short accessible path to the picnic shelter with atleast (1) ADA picnic table. Expand the play area to include an accessible swing or group spinner with accessible surfacing. Add some musical instruments within the concrete pad. Replace mulch with sand in digging area. Good park to prioritize site improvements.
Lewis Park	Two climbing structures. The large structure has multiple climbing options, over head bars, bridge, tunnel, net climber, and slides. The smaller structure has two slides and one climbing option. Additional components include 8 swings (six belt seats and two buckets seats) and sand digging area	● Street Parking nearest to playground, parking lot with accessible stall on other side of park	● No Path	● Rubber Mulch, wood chips, and sand	● No Restroom Facility near playground. Accessible restroom on other side of park.	● (2) Bench with back and armrest, (2) Bench with back, no armrest. All located in rubber mulch surfacing	● No	● (6) 3 Activity Panels, Steering Wheel, Bells, sand diggers	Larger Structure: (1) Transfer Station. Smaller Structure: (1) Transfer Station	Sand digging area, Access Ramp	Mostly physical play with sensory play in the sand digging area	Add an accessible path to the play area. Provide accessible play surfacing to transfer station and nearest slide. Move sand digging area close to the path, provide an accessible route and digger. Replace one of the swing sets with a group swing with accessible surfacing.
McDaniel Park	Two climbing structures. The platform structure has multiple climbing options, tunnels, and a slide. The net climbing structure has tunnels, spinning, and balancing. Additional components include 2 spinner seats, 4 swings (two belt seats, two bucket seats), and a sand digging area.	● Parking Lot with designated ADA parking	● Yes	● Rubber Mulch	● Public restrooms adjacent to the playground, but not accessible	● (2) Benches with backs located within rubber mulch area	● No	● (3) sand diggers, tunnel, spinners	Platfrom structure: (1) Transfer Station	Accessible digger in sand area, spinner seats	Mostly physical play with sensory play in the sand digging area	Replace rubber mulch with accessible play surfacing. Add an accessible swing. Include some imaginative elements like a playhouse or cozy space. Good park to prioritize site improvements.
Ridgeview Totlot	One small toddler climbing structure with two climbing options and a slide. Additional components include a spring rocker.	● Street Parking, no designated ADA parking	● No Path	● Sand	● No Restroom Facility	● None	● No	● (1) spring rockers (not accessible)	No ramp or transfer station	Spring rocker	Mostly physical play with sensory play in the sand surfacing	Focus on providing a wider range of play by adding sensory and imaginative elements like musical instruments and a play house or cozy space. There is enough space within the play area to add low steppers and balancing bar.
Valley Greenway Totlot	One toddler structure with tunnels, slides, and ladder. Additional components include 2 bucket seat swings.	● Street Parking, no designated ADA parking	● No Path	● Wood Chips	● No Restroom Facility	● (1) Benches with back and armrest, located within lawn	● Fenced on one side along water	● (1) tunnel (not accessible)	Platfrom structure: (1) Transfer Station	Access ramp and tunnel	All Physical Play	Provide an accessible path to the playground from the road. Add musical instruments and sand digging area for sensory play along path.
William McFarland Park	One structure with two climbing options and a double slide. Additional components include 2 spring rockers and sand digging area.	● Parking Lot with designated ADA parking	● Yes	● Wood Chips	● Yes	● None	● No	● (2) spring rockers and diggers (none accessible)	Platfrom structure: (1) Transfer Station	Paved access to playground, sand digging area	Mostly physical play with sensory play in the sand digging area	This playground is a good candidate for complete replacement. If replacement is not an options, consider providing an accessible sand digger and add musical instruments on the concrete pad.
Woodland Estates Park	One tall structure with multiple climbing options, slides, and tunnel. Ground level components include 4 swings (three belt seats, one bucket seat)	● Street Parking, no designated ADA parking	● No Path	● Wood Chips	● No Restroom Facility	● (1) Benches with back and armrest, located within chips	● No	● (2) activity panel (none accessible)	Platfrom structure: (1) Transfer Station	Access ramp and muscial panel	Majority physical play with a music sensory panel and imaginative play counter	Provide a paved pathway to the playground. Expand the playground to include a nest swing or spinners with accessible surfacing. Add a sand digging area with accessible digger along pathway.

Legend: ● = most inclusive, ● = somewhat inclusive, ● = least inclusive * Ratings are based on professional judgement

Village of McFarland - Inclusive Playground
Level of Service Inventory

Inclusive Playground Examples in Surrounding Communities

Park	Playground Description	Access to the Playground			Site Support Features			Playground Components			Type of Play	How to Improve the Site
		Accessible Parking	Accessible route to playground	Inclusive Play Surfacing	Accessible Restroom	Accessible Furnishings	Fenced Play Area	Types of Ground Level Components	Access by Transfer or Ramp	Best Inclusive Features	Variety of play types offered	
Brittingham Park, Madison	One large structure with multiple climbing options, slides, activity panels, overhead bars, spinning and balancing. The majority of the structures is accessible by ramps with additional transfer platforms within. Additional accessible components include group spinner, individual cozy spinner, double spring rocker, and 6 swings (two bucket seats, two belt seats, and two ADA seats)	● Yes	● Yes	● Pour-In-Place Rubber	● Yes	● (4) Benches with backs	● No	● (8) swings, spinners, spring rocker, tunnel, and 4 sensory panels	Ramps and multiple transfer stations	Surfacing, Group spinner, Individual spinner, Accessible swings, play structure ramp	Majority physical play with a few sensory panels	
Elvehjem School, Village of McFarland	Three play structures. Large structure with multiple climbing options and slides, activity panels, balancing, overhead bars, and spinning. A ramp provides access to the lower portion of the structure. Large structure is only partially within the accessible surfacing. Smaller structure with climbing options, tunnel, slide, activity panels and seating. Small structure is all within the accessible surfacing. Older Fire Truck themed structure, within the chips area, provides climbing options, slide, and imaginative play. Additional components include cozy dome climber, spinning seats, 10 swings (8 belt seats and 2 ADA seats). The ADA swing seats and 1 spinner is within the accessible surfacing.	● Yes	● Yes	● Pour-in-place rubber path with wood chips	● No Public Restroom	● (1) Accessible bench with back, (4) benches with backs in chips area.	● No	● (11) 7 activity panels, table and stools, dome hiding nook/climber, accessible swings, spinners	Large Structure: Ramp and (1) Transfer Station. Small Structure: (1) Transfer Station.	Surfacing, spinner seat, dome hiding nook/climber, accessible swings	Mostly physical play with sensory music panels and imaginative elements (Cozy dome climber, surfacing patterns, play counters, fire truck climber, house theme climber)	
Elver Park, Madison	Two play structures. One large structure with multiple climbing options, slides, balancing, overhead bars, cozy spaces, rocking, spinning, and activity panels. The majority of the structures is accessible by ramps. The smaller structure has a slide with climbing, sensory panels, and playhouse front for imaginative play. Additional components include group spinner, spring rockers, and 6 swings (two bucket seats, two belt seats, and two ADA seats).	● Yes	● Yes	● Pour-In-Place Rubber	● Yes	● (5) Benches with backs	● Partially fenced along road	● (10) steppers, spinners, swings, spring rockers, balancing bar, 5 activity panels	Large Structure: Ramps and (1) Transfer Stations. Small Structure (1) Transfer Station	Surfacing, Rocking Boat, Group Spinner, Swings, Cozy Spaces	Mostly physical play with sensory music panels and imaginative elements (Hiding nooks, surfacing patterns, play counters, alegator steppers, boat theme)	

Legend: ● = most inclusive, ● = somewhat inclusive, ● = least inclusive * Ratings are based on professional judgement

Park Inventory - McFarland Playgrounds

Autumn Grove Park

One play structure with multiple climbing options, overhead bars, and slides. Additional components include 4 swings (two belt swings, two bucket swings), 2 spring rockers, a sand digging area with diggers.



Brandt Park

One play structure with multiple climbing options, slides and sand digging area.



Cedar Ridge Park

One small play structure with bridge, overhead bars, and a double slide. Additional components include a spring rocker, four swings (two belt swings and two bucket swings), a net climbing wall, overhead rings, and sand digging area. Play components are dated and minimal.



Park Inventory - McFarland Playgrounds

Discovery Garden Park

One rope climbing structure with slide. Additional components include a camp themed climbing area with log steppers and a grass play mound. Play space contains unitary surfacing for easy access to all.



Egner Park

Two playground structures. The larger structure has hex cube climbers with slide, stepping pads, and overhead bars. The smaller structure has three short slides, a climbing net, and overhead bars. Additional components include, seesaw, standup spinner, and 5 swings (two belt swings, one ada swing, one double-occupancy swing, and one bucket swing). The park includes a number of inclusive play components.



Highland Oaks Park

One play structure with multiple climbing options, overhead bars, and slides. Additional components include 4 swings (two belt swings, two bucket swings), 2 spring rockers, a sand digging area with diggers.



Park Inventory - McFarland Playgrounds

Lewis Park

Two climbing structures. The large structure has multiple climbing options, over head bars, bridge, tunnel, net climber, and slides. The smaller structure has two slides and one climbing option. Additional components include 8 swings (six belt seats and two buckets seats) and sand digging area



McDaniel Park

Two climbing structures. The platform structure has multiple climbing options, tunnels, and a slide. The net climbing structure has tunnels, spinning, and balancing. Additional components include 2 spinner seats, 4 swings (two belt seats, two bucket seats), and a sand digging area.



Ridgeview Totlot

One small toddler climbing structure with two climbing options and a slide. Additional components include a spring rocker



Park Inventory - McFarland Playgrounds

Valley Greenway Totlot

One toddler structure with tunnels, slides, and ladder. Additional components include 2 bucket seat swings.



William McFarland Park

One structure with two climbing options and a double slide. Additional components include 2 spring rockers and sand digging area.



Woodland Estates Park

One tall structure with multiple climbing options, slides, and tunnel. Ground level components include 4 swings (three belt seats, one bucket seat)



Park Inventory - Inclusive Playgrounds in the Madison Area

Brittingham Park

One large structure with multiple climbing options, slides, activity panels, overhead bars, spinning and balancing. Additional accessible components include group spinner, individual cozy spinner, double spring rocker, and 6 swings (2 bucket seats, 2 belt seats, and 2 ADA). Unitary surfacing, perimeter path, and benches provide a comfortable and easily navigated space.



Elvehjem School

Three play structures. Large structure with multiple climbing options and slides, activity panels, balancing, overhead bars, and spinning. A ramp provides access to the lower portion of the structure. Large structure is only partially within the accessible surfacing. Smaller structure with climbing options, entirely within the accessible surfacing. Older Fire Truck themed structure, within the chips area, provides climbing options, slide, and imaginative play. Additional components include cozy dome climber, spinning seats, 10 swings. Although the unitary surfacing does not provide access to the entire play area, it does provide access to the accessible play components and a variety of types of play.



Elver Park

Two play structures. One large structure with multiple climbing options, slides, balancing, overhead bars, cozy spaces, rocking, spinning, and activity panels. The majority of the structure is accessible by ramps. The smaller structure has a slide with climbing, sensory panels, and playhouse front for imaginative play. Additional components include group spinner, spring rockers, and 6 swings (two bucket seats, two belt seats, and two ADA seats). The playground provides unitary surfacing throughout the space, multiple levels of challenges, imaginative play, and wheel-chair accessible components that do not require transferring.



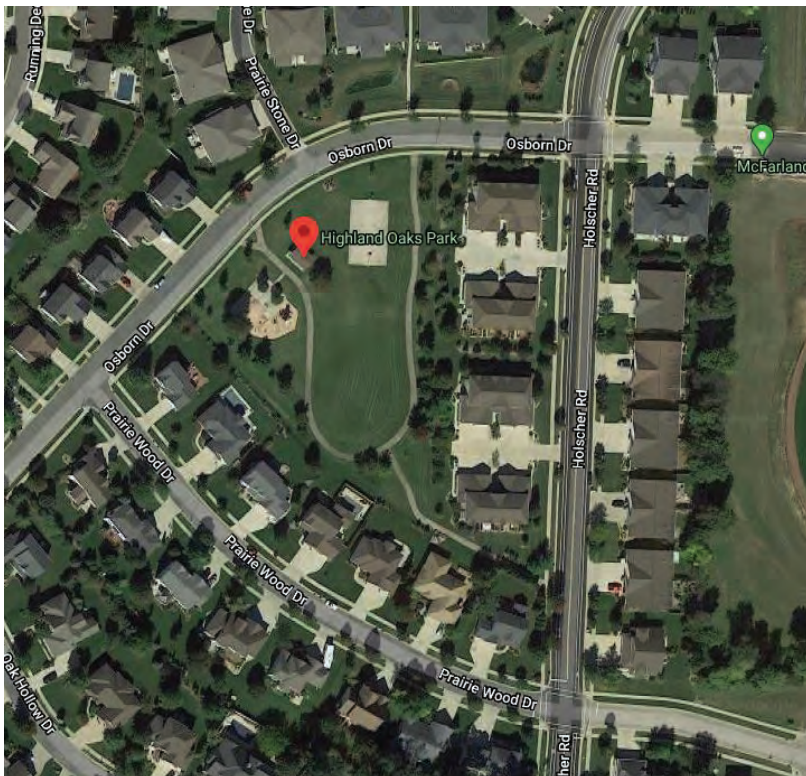
Site Development Discussion

Following the inventory and analysis of existing playgrounds within the Village of McFarland, the CORE Team discussed a number of different potential development sites, and through discussions narrowed the options down to three: Highlands Oak Park, Cedar Ridge Park and Community Park.



Highlands Oak Park

This 2.25 acre neighborhood park located on the east side of McFarland is nestled in a neighborhood with sidewalks making it highly accessible to the nearby houses and visible from the road. The existing site is relatively flat making it easy to provide accessible routes throughout. The existing playground is dated and does not provide much variety in types of play. The playground equipment is a good candidate for replacement. The rest of the park site is open, allowing for expansion of the playground and space for parking and site support features including picnic shelter and restrooms.



Cedar Ridge Park

This 3.9 acre neighborhood park located on the east side of McFarland, near the Waubesa Intermediate School. This park is connected to the nearby residents through an extensive web of sidewalks and is easily walkable from the nearby school. The park is large, open and provides safe walking routes and direct pedestrian access through the neighborhood. The gradual slope from the southeast corner to the northwest corner provides interest. We can use this slope within the playscape to create a more dynamic play environment with elevation changes and embankment slides while still providing accessible pathways. The existing playground equipment is minimal and aging making it a good candidate for replacement. The park has ample space for incorporating a small parking area and site support features.



Community Park

The newly acquired property by the Village of McFarland. It is a 26 acre site located near the intersection of County Hwy AB and Siggelkow Road, far from residents and the Village core. This site is a blank slate meaning the playscape design would not be confined by space or existing features. A playground at this location could be folded into the master planning for this property that is currently underway by a separate consultant. The site has a steady slope from the west to the east and provides excellent views of the farmland and woodland landscape beyond. The grading would allow for a dynamic play environment with play components designed into the hillside.

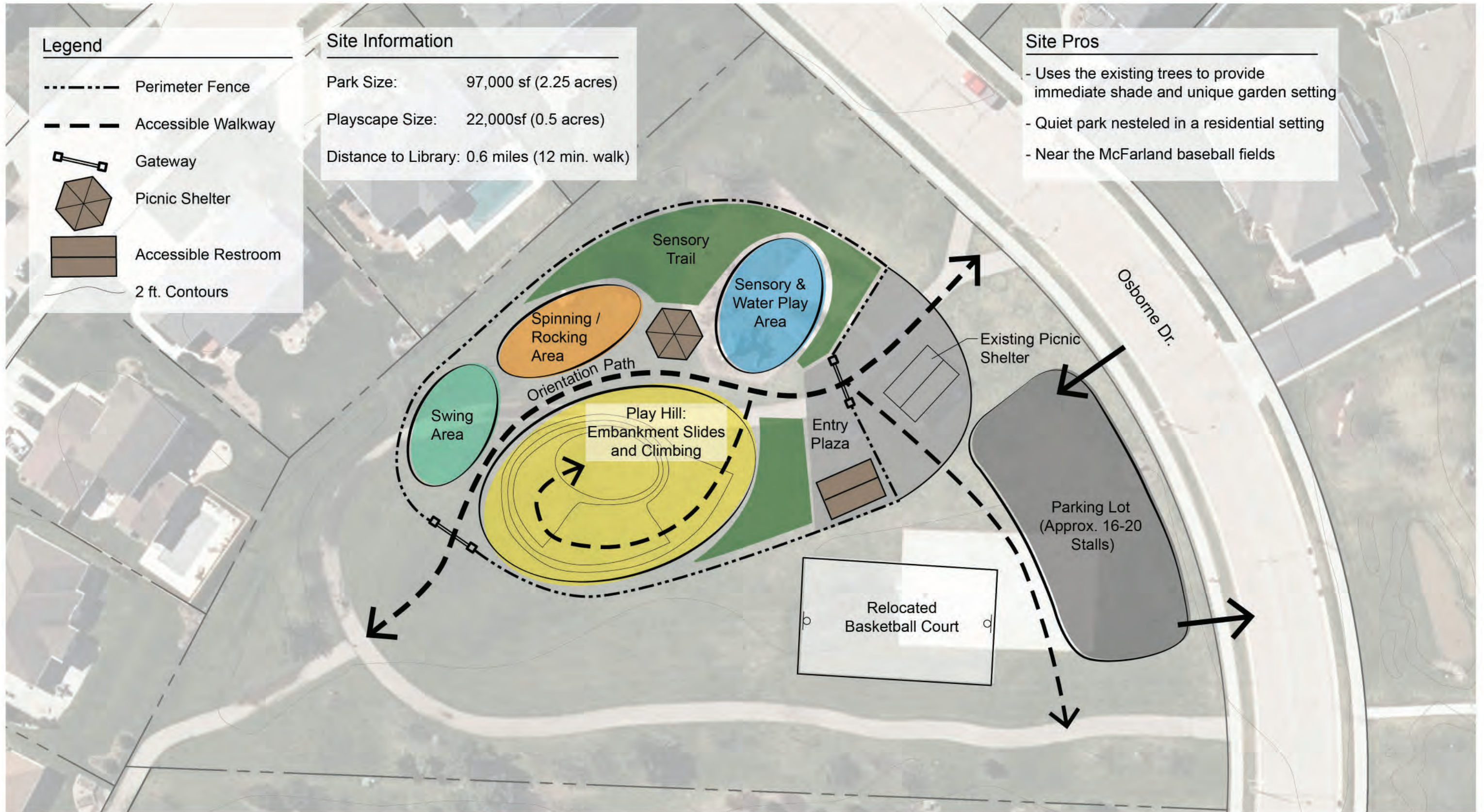


Design Approach Options

The design team created a bubble diagram for each of the three potential development sites. These diagrams are an early level design tool that generally organizes the spaces and sizes of components with a low level of detail. The play areas within each of the bubble diagrams are based on conversations among the CORE team. Through the discussions it became clear that the core team preferred to focus on types of play that stimulate the senses and provide a variety of different play options. All playground options incorporate features allowing for the fundamental needs of families with children of varying abilities to be met, including restrooms, seating, shade, parking, and accessible routes and surfaces. Play options include physical play, quiet reflection, imaginative, loose parts, sensory (art, music, tactile), and water.

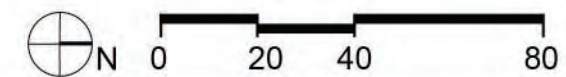
Below are the potential design options that were developed. The concept image boards exemplify the general look and feel for the playscape, the different types of play components, and support features.





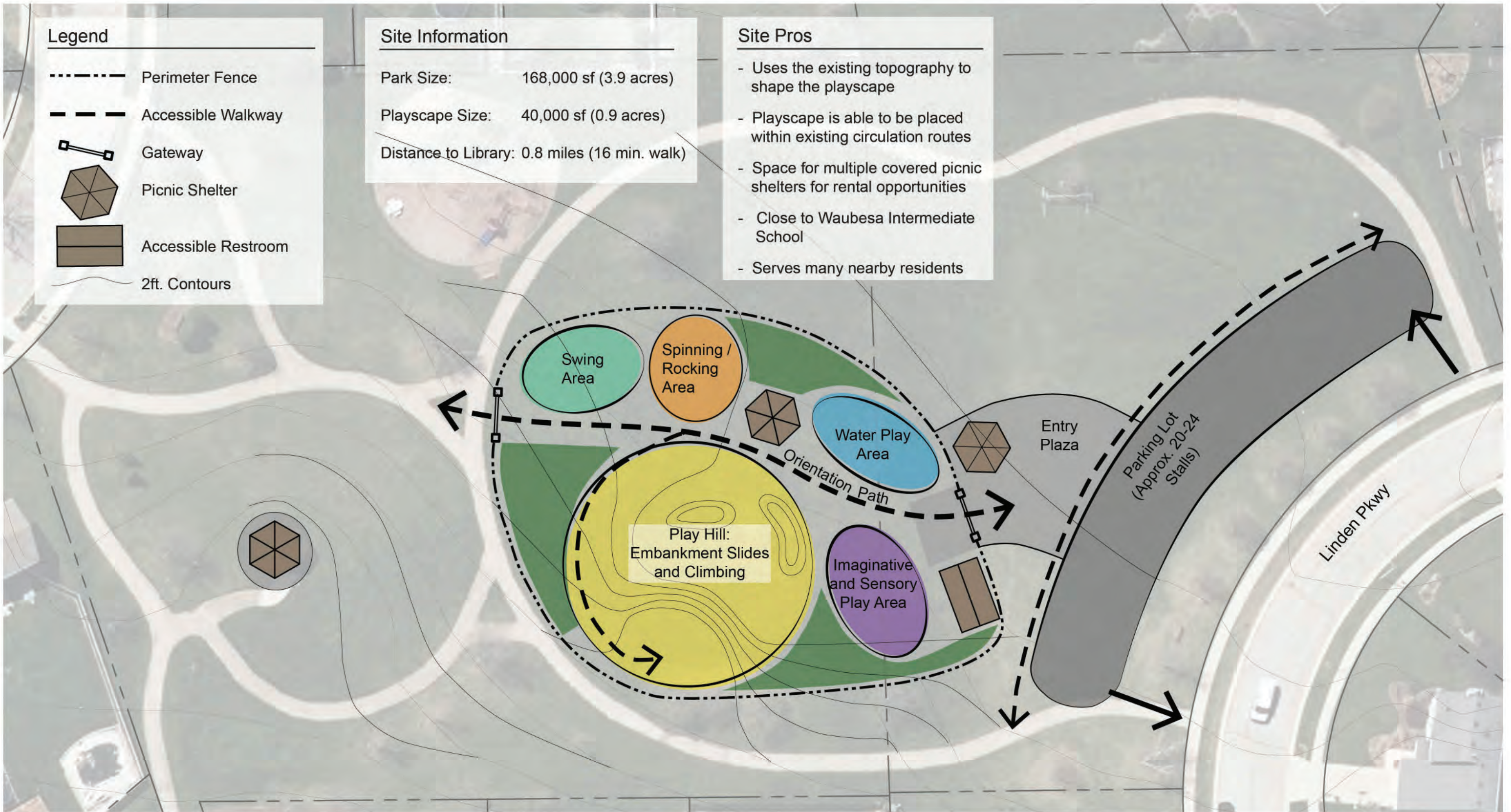
Potential Development Site A: Highlands Oak Park

Village of McFarland - Special Needs Park



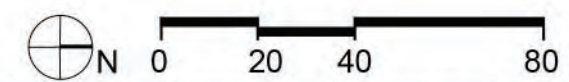
July 8, 2020





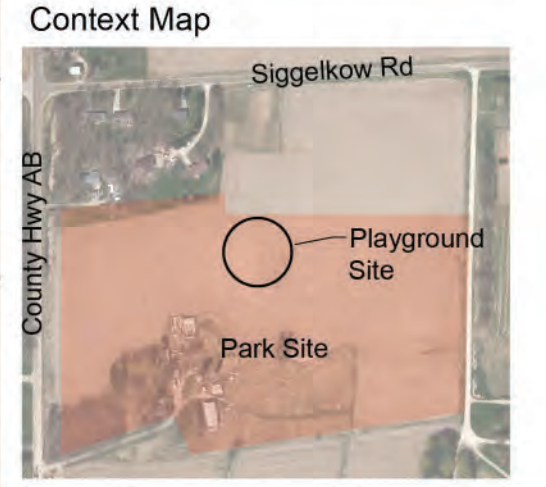
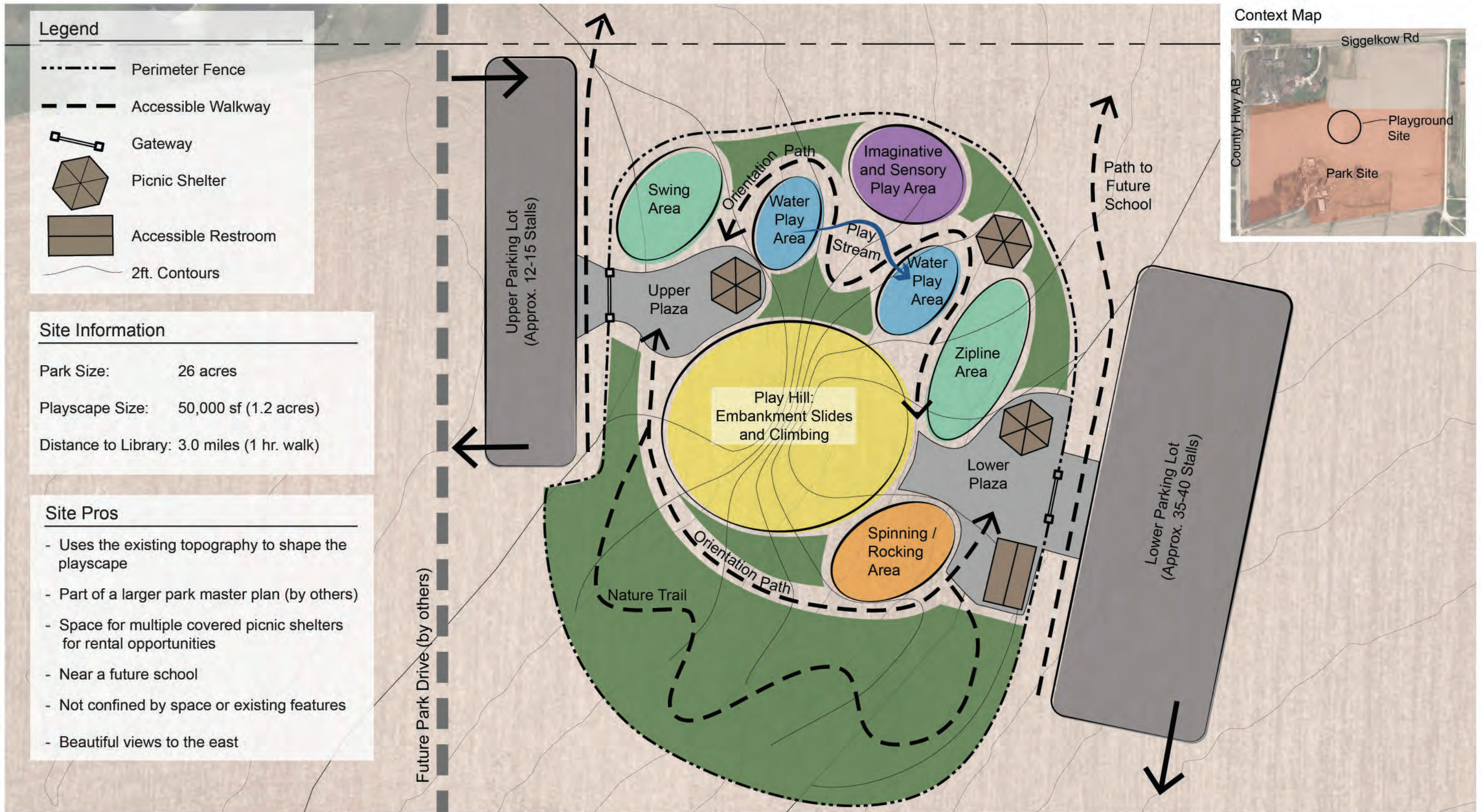
Potential Development Site B: Cedar Ridge Park

Village of McFarland - Special Needs Park



July 8, 2020





- Legend**
- Perimeter Fence
 - Accessible Walkway
 - Gateway
 - Picnic Shelter
 - Accessible Restroom
 - 2ft. Contours

Site Information

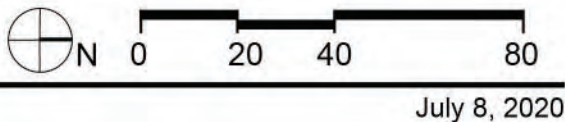
Park Size: 26 acres
 Playscape Size: 50,000 sf (1.2 acres)
 Distance to Library: 3.0 miles (1 hr. walk)

- Site Pros**
- Uses the existing topography to shape the playscape
 - Part of a larger park master plan (by others)
 - Space for multiple covered picnic shelters for rental opportunities
 - Near a future school
 - Not confined by space or existing features
 - Beautiful views to the east



Potential Development Site C: Community Park

Village of McFarland - Special Needs Park



July 8, 2020



Active Play: Climbing, Sliding, Swinging, Rocking



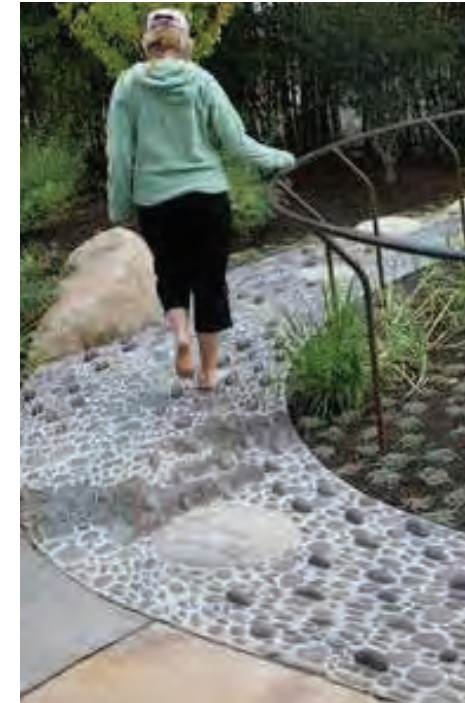
Concept Images

Village of McFarland - Special Needs Park

July 8, 2020



Passive Play: Sensory, Water, Discovery, and Imaginative



Concept Images

Village of McFarland - Special Needs Park

July 8, 2020



Community Involvement

To gather input from the community the three design options were presented to the public during a Facebook live event on 8/4/2020. After the presentation, community members were able to ask or submit written questions, which were then answered by the design team or the CORE team members. Immediately following the community event the Village of McFarland distributed a survey. The purpose of the survey was for the community to select a site for development of the inclusive playground and to gather input from the community on how they use the current playgrounds and what they would like included in the new inclusive playground.

Survey Summary:

The survey was available for two weeks and had 189 responses, 25% of those responses were from participants who have a child or care for a child with a disability or medical issue. The preferred playground development site was Cedar Ridge Park by over 50% of the responders, Community Park is preferred by just over 30% of the responders, and Highland Oaks was the least preferred site. The survey showed that the majority of the responders preferred Cedar Ridge Park for its walk-ability/ bike-ability, the over all park size, and its proximity to their place of residence.

The most popular types of play are listed below in order from most popular to least popular:

- 1 - Physical Play
- 2 - Vestibular Play (Sense of balance and spatial orientation)
- 3 - Water Play
- 4 - Imaginative Play
- 5 - Sensory Play
- 6 - Construction Play
- 7 - Nature Play
- 8 - Quiet Reflection

The most popular type of equipment preferred by users are listed below in order from most popular to least popular:

- 1 - Ladders/ bridges/ monkey bars/ climbing wall
- 2 - Slides
- 3 - Swings
- 4 - Balance beams / stepping stones
- 5 - Track Rides / Ziplines
- 6 - Tunnels
- 7 - Rockers/Seesaws
- 8 - Spinners

The top three site features needed on the playground in order to attract users of varying abilities include:

- 1 - Shade
- 2 - Restrooms
- 3 - Seating

See appendix A for the survey and appendix B for the full summary of survey results including written responses and comments.

Learning Landscapes Design presented these results to the Parks Committee on 8/27/20 for final comment and approval of Cedar Ridge Park as the selected development site for the future inclusive playground.

Concept Design

The Core team developed a list of program elements for the playground. These were selected based on survey result, the Core team's experiences with the targeted user group and park planning, and design discussions with Learning Landscapes Design and leading universal play specialist Mara Kaplan from Let Kid's Play!

Below is a summary of the design decision made:

- A play space for everyone should be our main goal.
- The Core team wants to focus on the types of play that are not provided elsewhere in the McFarland park system. Although, physical play is the most popular type of play by survey responders, it is also the most common type of play offered at the other parks within the community. The physical play items that are incorporated should be inclusive items that focus on movement and should be unique to this park.
- The primary focus of the playscape should be vestibular play, sensory play and imaginative play. The secondary focus of the playscape should be physical play, nature play, and quiet reflection.
- The types of play should be sensory rich in order to engage users with sensory processing disorders. Sensory rich items include elements that engage visual, auditory, tactile, vestibular, and proprioceptive senses. The vestibular system relates to balance and the proprioceptive system relates to the awareness of how your body is positioned within the world. Sensory rich play environments allow children of all abilities to integrate and develop their senses. Children with sensory processing disorders, whether they are hyper or hypo sensitive are able work on and train their senses to a wider range of experiences which better prepares them for the variety every day situations.
- The Core team decided to remove water play from the playscape. Water play should be made the primary focus of another project to allow water play to be a deliberate decision for both the users and the care givers.
- The zip-line was removed from the playscape due to the space required for this piece of equipment and the limited amount of users it can accommodate at one time. The team decided it would be better to focus on slides, swings, spinners, and balancing elements because of their vestibular input benefits.
- Perimeter fences and gated entrances allow children to freely play without the risk that they run into nearby dangers. This is especially true for children on the Autism spectrum who tend to run away from stimulation. Perimeter fences and gates provide caregivers with piece of mind that their child will not suddenly leave or wander away from the play space. The whole play experience including play equipment, pathways, and support features such as picnic tables and restrooms is surrounded by a fence and limited to one entrance with a gate.



- Play elements should provide multiple challenge levels for safe risk taking.
- Materials should be a blend of natural elements and equipment.
- Use of unitary surfacing should be used within the use zones of play components. Unitary surfacing should be pour-in-place rubber or artificial turf.
- Designated accessible parking spaces should be provided within the parking lot to make access to the playscape easier for those arriving by vehicle.
- Based on survey results the team has decided to focus on the following site support features: seating, shade, and a restroom. A variety of seating should be provided through the space and shade should be provided in areas where users may be spending extended periods of time.
- A restroom with an adult changing table makes it easier for care givers and users to visit the playscape knowing their needs are met without having the leave. Large family style restrooms allow groups to enter the restroom together if needed, increasing supervision options.
- Quiet reflection or cozy spaces provide a place where children can go to decompress or relax when they are over stimulated. The survey indicated that one large quiet reflection space was not desired by the community. However, small quiet reflection spaces should be peppered throughout the design. Cozy spaces may be a sitting areas with high walls or a low overhead structure where children feel safe and enclosed while still being visible to others.
- An orientation path should connect all the areas and be completely accessible. Orientation paths allow users and caregivers the opportunity to tour and take in the entire space before choosing to engage. Users are able to create an internal map in their head in case they need to suddenly change their environment.
- The playscape should provide a map of the space both at the playscape entrance and on the McFarland parks and rec website. This will allow both users and caregivers to become familiar with the layout of the space and to help prepare for their visit to the park, minimizing the amount of surprises or unforeseen situations.
- Themes were discussed and the core team decided a theme should be incorporated on a small scale, but not throughout the entire playscape. The Core team suggested an emergency responders theme such as fire truck, ambulance, or police car.



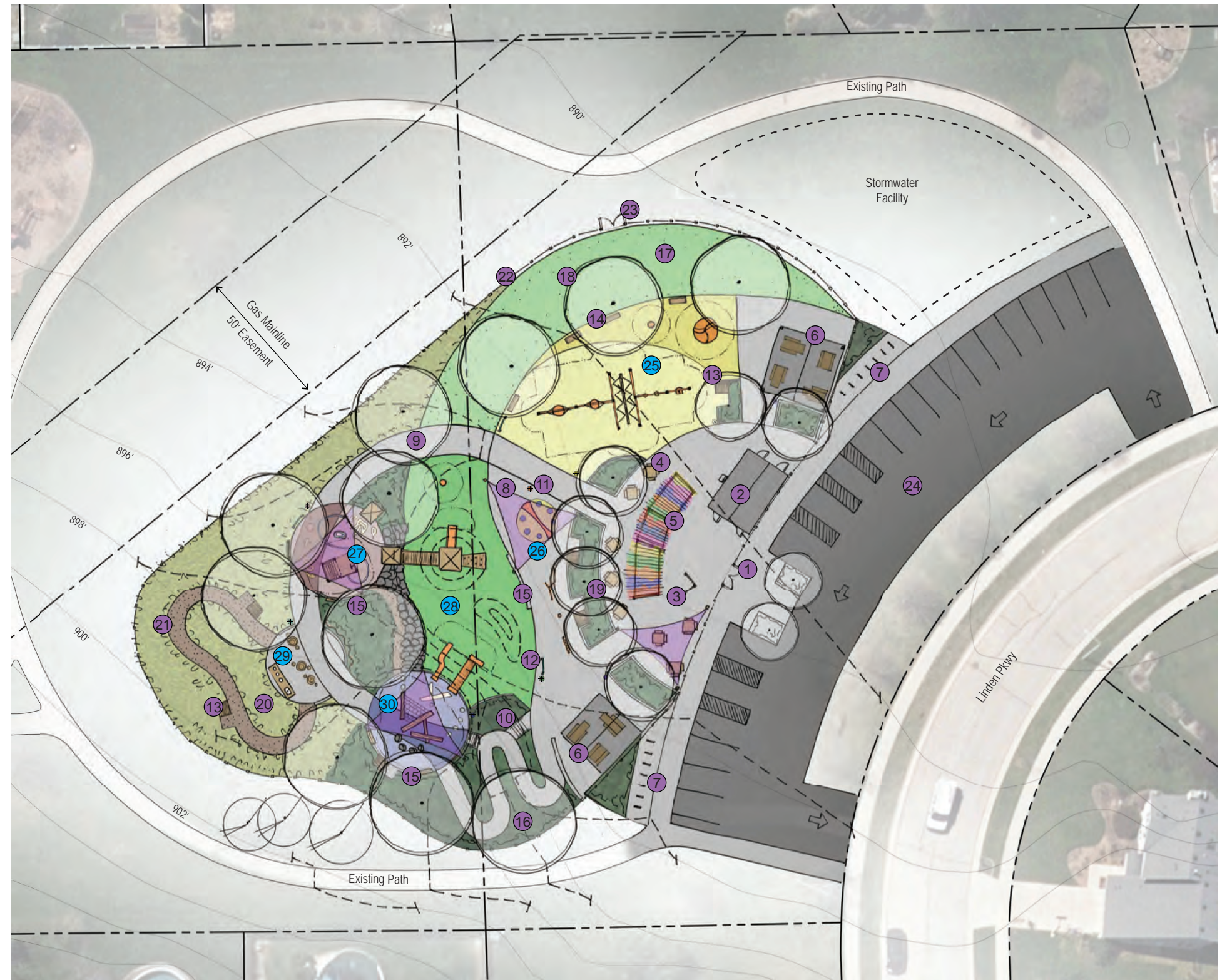
The survey results, the design meetings and the Core team decisions resulted in the following concept plan. Accompanying this plan are concept images and an estimate of probable cost.

Site Elements

- 1 Entry Gate
- 2 Family Restrooms with Adult Changing Tables
- 3 Map / Park Signage
- 4 Picnic Tables
- 5 Colorful Shadow Overhead Structure
- 6 Picnic Shelter (2)
- 7 Bike Racks
- 8 Shade Sail Structure (4)
- 9 Orientation Path
- 10 Stairs
- 11 Wayfinding Posts (6)
- 12 Communication Boards (3)
- 13 Quiet Nooks (6)
- 14 Benches
- 15 Raised Concrete Seating Wall
- 16 Planting Area, typ.
- 17 Open Lawn
- 18 Large Shade Trees
- 19 Quaking Aspen Grove
- 20 Wild Flower and Tall Grass Meadow
- 21 Crushed Aggregate Pathway
- 22 Perimeter Fence
- 23 Maintenance Access Gate
- 24 Parking Lot (21 Spaces)

Play Elements

- 25 Vestibular Play Area
 - Wheelchair Accessible Spinner
 - Single Spinner Seat
 - Swing Structure: Accessible Swing Seat, Bucket Swing (2), Pendulum Rope Swing, Nest Swing (2)
 - Pour-In-Place Rubber Surfacing
- 26 Sensory Area
 - Electronic Movement Game
 - Sensory Panels
 - Musical Instruments
- 27 2-5yr old Play Area
 - Playhouses
 - Fire Truck with Steering Wheel and Net Seat
 - Fire Station Bells
 - Fire Dog Statue
 - Pour-In-Place Rubber Surfacing with Patterns
- 28 Hill Play Area
 - Boulder Scramble
 - Cave
 - Embankment Slide
 - Playhouses and Bridge
 - Climbing Wall
 - Play Mounds
 - Artificial Turf Surfacing
- 29 Nature Play Area
 - Nature Kitchen
 - Log Table and Stump Seats
 - Exploration Path
 - Woven Stick Peek Through Panel
- 30 5-12yr old Play Area
 - Embankment Slide
 - Embankment Roller Slide
 - Balancing and Climbing Logs, Boulders, and Net
 - Pour-In-Place Rubber Surfacing with Patterns



Cedar Ridge Park Inclusive Playground - Draft Concept Plan

Village of McFarland, WI

November 12th, 2020



Swinging and Spinning



Hills, Slides, and Forts



Cedar Ridge Park Inclusive Playground - Concept Images

Village of McFarland , WI

November 19th, 2020



Imaginative Play, Sensory Play, and Climbing



Cedar Ridge Park Inclusive Playground - Concept Images

Village of McFarland, WI

November 19th, 2020





Cedar Ridge Park Inclusive Playground - Concept Images

Village of McFarland, WI

November 19th, 2020



McFarland Inclusive Playscape

Estimate of Costs

11/19/20

<i>ITEM</i>	<i>QTY.</i>	<i>UNIT</i>	<i>UNIT COST</i>	<i>TOTAL COST (Grey = possible savings)</i>	<i>REMARKS</i>	<i>SOURCE</i>
SITE PREPARATION & DEMOLITION				<i>\$36,000</i>		
Mobilization	1	LS	\$30,000	\$30,000		
Demo	1	LS	\$2,000	\$2,000	Contractor to demo a few trees and a small section of path.	
Erosion Control	1	LS	\$4,000.00	\$4,000	Silt fence \$50 lf plus inlet covers	
EARTHWORK AND DRAINAGE				<i>\$41,250</i>		
Top Soil Stripping and Saving	62000	SF	\$0.25	\$15,500	Assumes stripping and saving top 4" of existing soil	
Site Grading	370	CY	\$40.00	\$14,800	Balanced Cut/Fill (Roughly 10,000sf cut / 10,000sf fill)	
Fine Grading	13000	SF	\$0.25	\$3,250	Sod, Seeding, and Planting Areas	
Drain Pipe Under Play Surfacing	300	LF	\$9.00	\$2,700	4" perforated pipe connect to stormwater area	
Stormwater Plumbing	1	AL	\$5,000.00	\$5,000	Drainlines and drainage infrastructure from playarea and parking lot to stormwater facility	
PAVING AND CONCRETE				<i>\$285,944</i>		
Asphalt paving (parking lot)	11300	SF	\$6.00	\$67,800	4" depth asphalt paving	
Concrete Paving - 4" depth	14200	SF	\$10.00	\$142,000	10,400sq within playground fence, 3800sq along parking lot.	
Concrete Stairs w/ Handrails	1	LS	\$10,000.00	\$10,000	Concrete stairs + 4 hand rails, 5 risers each stairscase	
Concrete Walls	450	LF	\$125.00	\$56,250	8-10" curb width, top of planter: 18" above finish grade.	
Wood Bench Tops to Seat Wall	5	EA	\$1,500.00	\$7,500	Allowance for custom construction	
Crushed Aggregate Path - 6' Wide	21	tons	\$114.00	\$2,394	Narrow pathway at top of boulder scramble and 6' wide path in Nature Play Area - Includes stone, labor, site prep, and fabric. Stone: 925sf @ 4" depth = 21 tons, Price \$48/ton. Labor = \$1.50/sf	Halquist Stone

McFarland Inclusive Playscape

Estimate of Costs

11/19/20

SITE IMPROVEMENTS - GENERAL					\$414,750		
Restroom	1	LS	\$150,000.00	\$150,000	Includes restroom building, (2) adult changing tables, drinking fountain, utilities connections (water, sewer, storm), installation, and freight	HuffCutt & Max-Ability	
Picnic Shelter (2)	1	LS	\$70,000.00	\$70,000	20x20 Gable Structure \$14,775, 24x24 Gable Structure \$19,300. Includes engineering, installation, and freight	Coverworx	
Colorful Entrance Structure	1	LS	\$40,000.00	\$40,000	Wood pergola, 45' length through center of structure x 10' width. Colorful Plexiglass roof sold separately and installed by contractor.	Coverworx	
Shadesails	4	EA	\$15,000.00	\$60,000	30x30x30 Triangular Shade Sail with (3) metal posts. Includes engineering, installation, and freight.		
Perimeter Fence	750	LF	\$42.00	\$31,500	4' ht. Black Aluminum Fence with (2) double hinge gates		
Bike Racks	17	EA	\$250.00	\$4,250	Allowance for purchase item. Black powder coated "U" Rack, surface mounted with grout cover. Includes product, installation, and shipping		
Picnic Tables	16	EA	\$1,000.00	\$16,000	An allowance for purchased item. (8) ADA accessible square picnic tables and (8) ADA accessible rectangular picnic tables. Includes freight.		
Benches	6	EA	\$1,500.00	\$9,000	Allowance for purchased item. Includes freight.		
Quiet Nooks	6	EA	\$1,500.00	\$9,000	Allowance for custom construction. Seating platforms designed to create a sense of enclosure.		
Wayfinding Posts	6	EA	\$1,500.00	\$9,000	Allowance for custom 10' ht. 6x6 posts with colored sign or painted icon for wayfinding. Embedded in concrete footing.		
Communication Boards	3	EA	\$2,000.00	\$6,000	Allowance for purchased item		
Entrance Sign / Map and Kiosk	1	LS	\$10,000.00	\$10,000	Allowance for purchased item		
PLAYGROUND SURFACING					\$147,900		
Pour-in-place rubber surfacing	5630	SF	\$15.00	\$84,450	100% Color Pour-In-Place Rubber. Includes sub-base, rubber, and installation. Does not include Excavation. Cost savings opportunity: 50% color / 50% black rubber blend. Two to five area 900 Sf, Vestibular area 3700sf, five to twelve 1030sf		
Flush Concrete Curb at PIP Edge - 6" wide	230	LF	\$15.00	\$3,450			
Artificial Turf Surfacing	3000	SF	\$20.00	\$60,000	Includes sub-base, turf, and install. Does not include excavation		

McFarland Inclusive Playscape

Estimate of Costs

11/19/20

VESTIBULAR PLAY AREA		\$71,650				
Wheelchair Accessible Spinner	1	LS	\$13,900.00	\$13,900	The Inclusive Whirl, Price includes product, installation, and Freight	PlayWorld
Single Spinner Seat	1	LS	\$3,750.00	\$3,750	Cozy Cocoon, price includes product , installation, and Fright	PlayWorld
Swing Structure	1	LS	\$54,000.00	\$54,000	Includes (1) rope swing, (2) bucket swings, (1) Accessible swing seat, (2) nest swings	Columbia Cascade
SENSORY AREA		\$78,100				
Electronic Movement Game	1	LS	\$55,000.00	\$55,000	Sona, includes product, 10 subscription, pavement painting, installation, and freight	Yalp
Sensory Panels	1	LS	\$15,250.00	\$15,250	Museum Grand Gallery Sensory Panels, price includes product, installation, and freight	Miracle Recreation
Musical Instruments	1	LS	\$2,500.00	\$2,500	Small Cabasa and Large Cabasa, price includes product, installation and freight	PlayWorld
Musical Instruments	1	LS	\$5,350.00	\$5,350	Concerto Chimes, price includes product, installation, and freight	PlayWorld
2-5 YR OLD AREA		\$40,000				
Musical Instrument - Fire Station Bell	1	LS	\$2,500.00	\$2,500	An Allowance for custom construction	
Playhouses	2	EA	\$5,000.00	\$10,000	An Allowance for custom construction. Playhouse to have 4 sides and roof.	
Wood Fire Truck	1	LS	\$12,000.00	\$12,000	An Allowance for custom construction. Truck includes steering wheel, crawl through opening, partial overhead structure, wide opening and wheel chair turnaround space, window openings, cargo net seat.	
Interpretive Play Signage	1	LS	\$500.00	\$500	Allowance for purchased item	
Fire Station Themed Statue (Dalmation or Fire Hydrant)	1	LS	\$5,000.00	\$5,000	Allowance for purchased item	
Small Custom Climber	1	LS	\$10,000.00	\$10,000	Allowance for custom construction	
HILL PLAY AREA		\$42,000				
Wood Hilltop Structure / Bridge / Climbing Wall	1	LS	\$30,000.00	\$30,000	Allowance for custom construction	
3' ht, Wide Plastic Embankment Slide	1	LS	\$5,000.00	\$5,000	Includes slide, sit down platform, and installation. Hill slide installation does not include preparation/grading of hill.	Playworld
Single Spinner Seat	1	LS	\$2,000.00	\$2,000	Spin Cup, price includes product, installation, and freight	Playworld
Boulder Scramble	1	LS	\$5,000.00	\$5,000		

McFarland Inclusive Playscape

Estimate of Costs

11/19/20

NATURE PLAY AREA					\$6,800	
(1) Log Table and (2) Stump Seats	3	EA	\$500.00	\$1,500	An Allowance for custom construction	
Nature Kitchen	1	LS	\$3,000.00	\$3,000	An Allowance for custom construction	
Woven Stick Peek Through Panel	1	LS	\$2,000.00	\$2,000	An Allowance for artistic installation	
Habitat Houses	2	EA	\$150.00	\$300	An Allowance for habitat houses. Includes installation and freight.	
5-12 YR OLD AREA					\$26,550	
Double Crisscross Logs - 12-8" dia	1	LS	\$3,000.00	\$3,000	An Allowance for custom construction	
Single Elevated Balancing Lot	1	LS	\$1,000.00	\$1,000	An Allowance for custom construction	
Climbing Net	1	LS	\$2,000.00	\$2,000	An Allowance for custom construction	
Stepping Stones	4	EA	\$500.00	\$2,000	Boulders set into the safety surfacing	
6' Plastic Embankment Slide with Transfer Seat at Bottom	1	EA	\$7,550.00	\$7,550	Includes slide, sit down platform, and installation. Hill slide installation does not include preparation/grading of hill.	PlayWorld
6' Roller Embankment Slide with Transfer Seat at Bottom	1	EA	\$11,000.00	\$11,000	Includes slide, sit down platform, and installation. Hill slide installation does not include preparation/grading of hill.	PlayWorld
PLANTING & IRRIGATION					\$48,500	
Planting Beds	4200	SF	\$3.50	\$14,700	Assumes no irrigation. Includes soil, plants, top dressing, and installation.	
Open Lawn - Sod	3700	SF	\$1.50	\$5,550	Assumes no irrigation. Includes sod, soil, and installation.	
Seeded Area - Wild Flowers and Tall Grass	5000	SF	\$0.25	\$1,250	Assumes no irrigation. Includes seed, soil, and installation.	
Shade Trees	20	EA	\$300.00	\$6,000	Assumes no irrigation.	
Stormwater Facility	6000	SF	\$3.50	\$21,000	Assumes no irrigation. Includes soil, plants, top dressing, and installation	
Estimated Construction Cost					\$1,239,444.00	
Contractor Overhed and Bonding		10%		\$123,944		
Permit		1%		\$12,394		
Contengency		15%		\$185,917		
Estimated Construction Cost					\$1,561,699.44	

Appendix A

Village of McFarland – Special Needs Playground Survey

The Village of McFarland is planning for a new inclusive playground with the help of Learning Landscapes Design. The objective of this inclusive playground will be to include everyone in the McFarland community. With your input, we will create a thoughtfully designed play environment where children of all abilities can play together and be challenged at their own developmental level. Our goal for this playground is to take away the barriers, both physical and social, and provide a fun experience for all.

Through a site analysis process, we have chosen three potential development sites and we would like the community to weigh in on your preferred location. We have put together a graphic, which can be found at: <https://bit.ly/33q2oZh>, that shows a preliminary design approach at each potential location.

Please take a few minutes to review the design approach options and answer the following questions. This survey will help us understand which location is preferred, how playgrounds are used, and what you would like to see included in the design.

Thank you!

1. Out of the three location in mind, please rank each of the following playground sites in order of importance with (1) being the most desired location and (3) being the least desired location.

_____ Highlands Oak Park (5945 Osborn Dr)

_____ Cedar Ridge Park (5303 Wild Cherry Ln)

_____ Community Park (3234 County Hwy AB)

2. Referring to question number one, why is the selected park above your MOST desirable location for an inclusive playground? (Select all that apply)

_____ Near your place of residence

_____ Distance from town center

_____ Walkable / Bikeable

_____ Easy to get to by car

_____ Park Size

_____ Other:

3. Referring to question number one, why is the selected park above your LEAST desirable location for an inclusive playground? (Select all that apply)

_____ Too far from your place of residence

_____ Distance from town center

_____ Not walkable / bikeable

_____ Difficult to get to by car

_____ Park Size

_____ Other:

Section II: Types of Play

The following questions are for parents and caregivers to rank the type of play, or activity, that your child[ren] enjoy most. Please answer the questions based on the number of children with your household.

4. Child One: Rank the type of play your child enjoys the most. (1) being the most enjoyable and (8) being least enjoyable.

- Physical Play (jumping, climbing, running, etc.)
- Imaginative Play (pretend house or castle)
- Sensory Play (music, art, colors, tactile panels)
- Vestibular Play (spinning, swinging, etc.)
- Water Play (water works station)
- Construction Play (building forts or stacking blocks)
- Quiet Reflection (sitting, observation)
- Nature Play (exploration, flower picking, bug hunts, etc.)

5. Child Two: Rank the type of play your child enjoys the most? (1) being the most enjoyable and (8) being least enjoyable

- Physical Play (jumping, climbing, running, etc.)
- Imaginative Play (pretend house or castle)
- Sensory Play (music, art, colors, tactile panels)
- Vestibular Play (spinning, swinging, etc.)
- Water Play (water works station)
- Construction Play (building forts or stacking blocks)
- Quiet Reflection (sitting, observation)
- Nature Play (exploration, flower picking, bug hunts, etc.)

6. Child Three: Rank the type of play your child enjoys the most? (1) being the most enjoyable and (8) being least enjoyable

- Physical Play (jumping, climbing, running, etc.)
- Imaginative Play (pretend house or castle)
- Sensory Play (music, art, colors, tactile panels)
- Vestibular Play (spinning, swinging, etc.)
- Water Play (water works station)
- Construction Play (building forts or stacking blocks)
- Quiet Reflection (sitting, observation)
- Nature Play (exploration, flower picking, bug hunts, etc.)

7. Child Four: Rank the type of play your child enjoys the most? (1) being the most enjoyable and (8) being least enjoyable

- Physical Play (jumping, climbing, running, etc.)
- Imaginative Play (pretend house or castle)
- Sensory Play (music, art, colors, tactile panels)
- Vestibular Play (spinning, swinging, etc.)
- Water Play (water works station)
- Construction Play (building forts or stacking blocks)
- Quiet Reflection (sitting, observation)
- Nature Play (exploration, flower picking, bug hunts, etc.)

Village of McFarland – Special Needs Playground Survey, continued

8. Please rank the type of physical equipment children in your household prefer? (1) being the most popular and (8) being the least popular.

- Slides
- Ladders/bridges/monkey/climbing walls
- Balance beams/ stepping stones
- Tunnels
- Rockers/Seesaws
- Swings
- Spinners
- Track Rides/Zip Lines

9. Please select the top (3) site features needed on the playground.

- Seating
- Restrooms
- Perimeter Containment Fence
- Unitary Surfacing (i.e. rubber playground surfacing)
- Shade
- Signage (Wayfinding, Map, Orientation)
- Picnic Tables
- Parking
- Drinking Water
- Other:

10. Does your child, or a child you car for, have a disability or medical issue?

- Yes
- No

11. If you answered "yes: to the questions above, please explain how it impacts their playground experience.

12. What can we add to the playground to ensure that your family has what they need to come and play?

13. Any additional comments? Please share.

Appendix B

Survey Results

ABOUT

Survey Open ... August 5 – August 19

Total Responses ... 189

Average Time to Complete ... 24:10

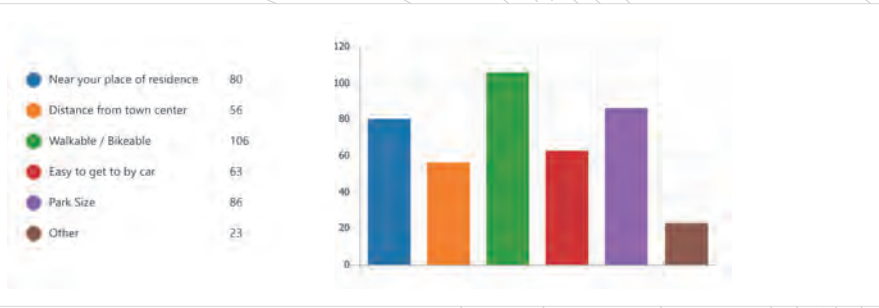
Q1: 161 Responses

Out of the three locations in mind, please rank each of the following playground sites in order of importance with (1) being the most desired location to (3) being the least desired location.

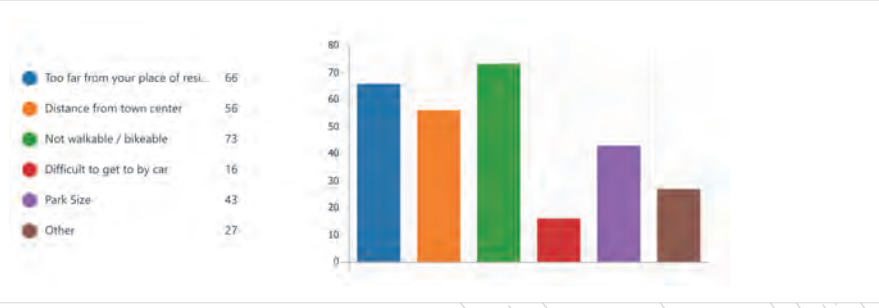
Rank	Options
1	Cedar Ridge Park (5303 Wild ...
2	Highlands Oak Park (5945 Osb...
3	Community Park (3234 Count...



- **Cedar Ridge Park**
 - 53.4% First Choice
 - 21.7% Second Choice
 - 24.8% Third Choice
- **Highland Oak Park**
 - 13.7% First Choice
 - 59.6% Second Choice
 - 26.7% Third Choice
- **Community Park**
 - 32.9% First Choice
 - 18.6% Second Choice
 - 48.4% Third Choice

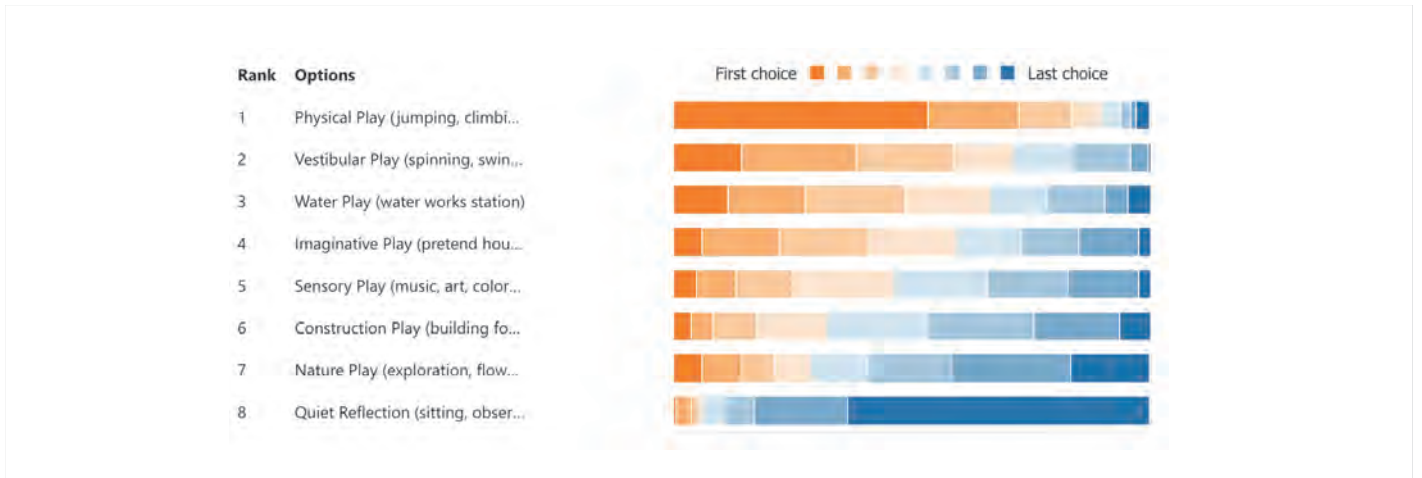


Q2: 187 Responses
 Referring to question number one, why is the selected park above your MOST desirable location for an inclusive playground?



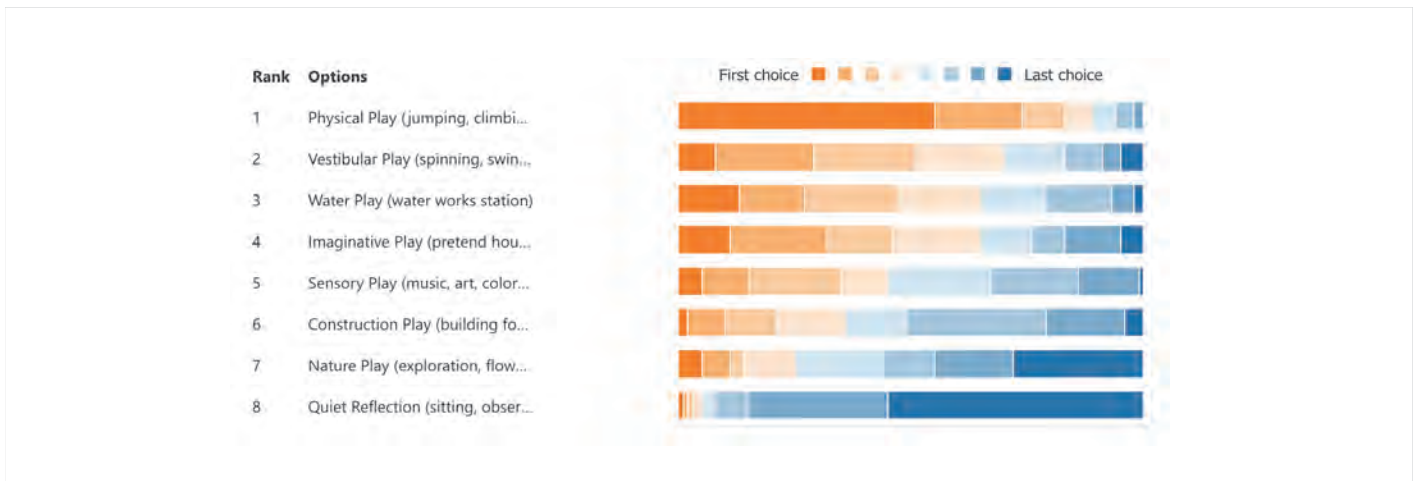
Q3: 170 Responses
 Referring to question number one, why is the selected park above your LEAST desirable location for an inclusive playground?

Appendix B - Survey Results



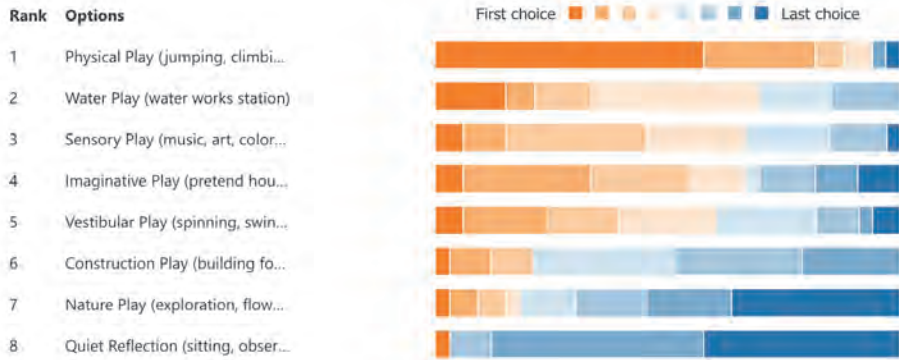
Q4: 167 Responses

Child One: Please rank the type of play your child enjoys the most. (1) being the most enjoyable and (8) being least enjoyable.



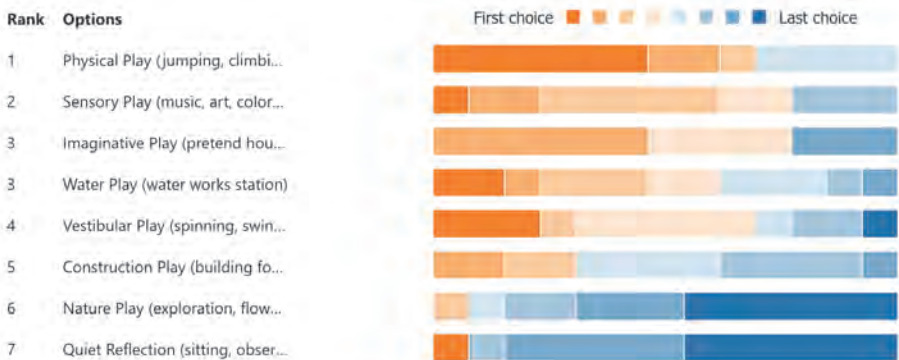
Q5: 100 Responses

Child Two: Please rank the type of play your child enjoys the most. (1) being the most enjoyable and (8) being least enjoyable.



Q6: 33 Responses

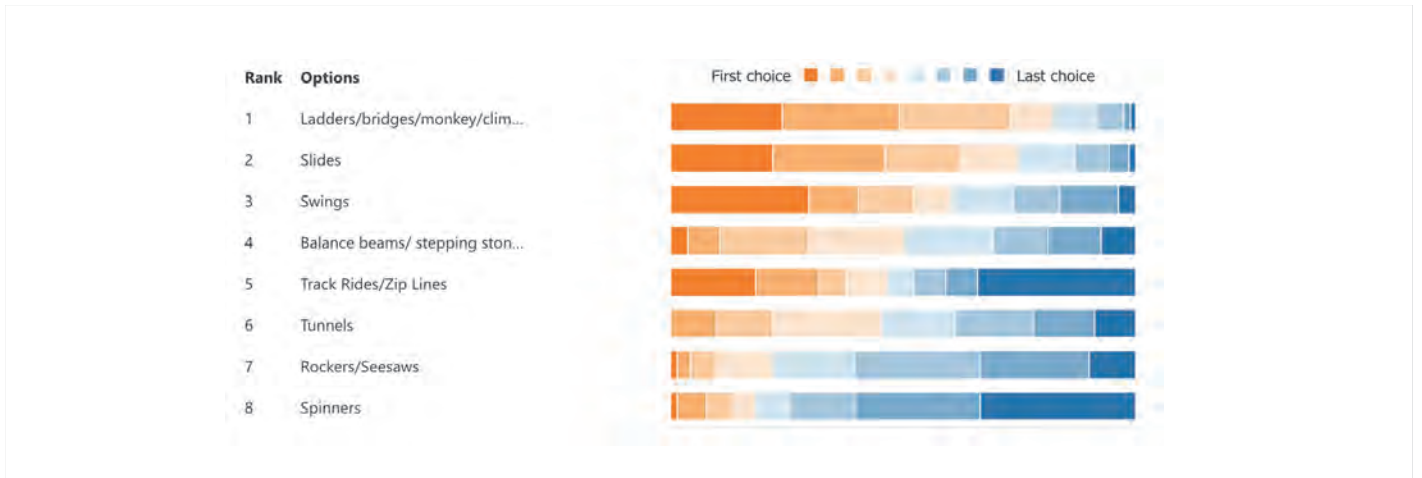
Child Three: Please rank the type of play your child enjoys the most. (1) being the most enjoyable and (8) being least enjoyable.



Q7: 13 Responses

Child Four: Please rank the type of play your child enjoys the most. (1) being the most enjoyable and (8) being least enjoyable.

Appendix B - Survey Results



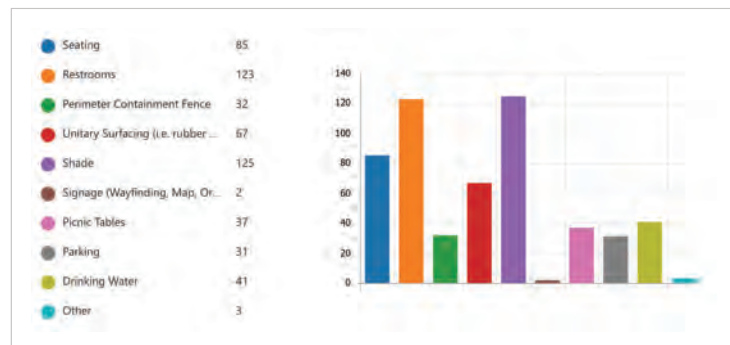
Q8: 159 Responses

Please rank the type of physical equipment children in your household prefer? (1) being the most preferred and (8) being the least preferred.

Q9: 179 Responses

Please select your top 3 site features needed on the playground.

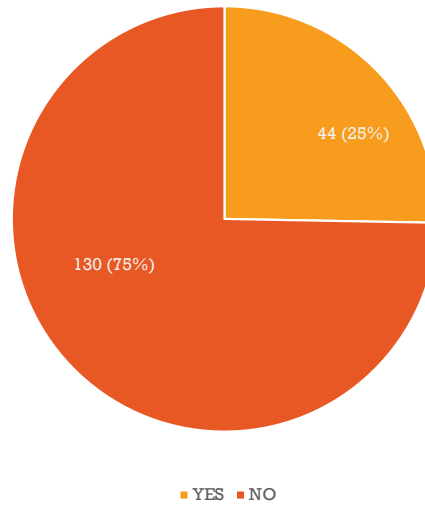
SHADE RESTROOMS SEATING



Q10: 174 Responses

Does your child, or a child you care for, have a disability or medical issue?

RESULTS



She just needs an area to take a break and catch her breath. She has asthma.

Need to be able to supervise easily, tends to run off, needs support to use equipment

Our daughter uses a wheelchair. She is unable to use her arms and legs for play. She also can't sit up or hold her head up on her own. She relies on a caregiver to help her play and push her in her chair.

She is in a wheelchair

Uneven ground makes it trickier to navigate

Needs to observe hearing and physical impairment

Needs assistance to get into swings, etc.

Autistic

It is helpful to us to have a restroom close by that is accessible to the child and the caregiver to assist as needed.

Inclusion is huge. Being able to participate to any degree with peers is long overdue, appreciated, and welcomed!

Mental and physical disabilities make sensory very important.

Developmental delays,

Doesn't enjoy traditional playgrounds because they are too physically demanding.

Most playgrounds have limited access.

Less emphasis on physical play, more sensory activities

Cerebral palsy—need wheelchair accessible activities and supportive equipment for reduced tone

My son has fluid on the brain and macrocephaly which causes him to fall more frequently during physical activity. Because of this, I prefer playgrounds with rubber and avoid mulch which is less stable.

Lacks balance and size compared to peers.

Blindness

Some things are too tricky

Autism: he runs away

sun allergies chemical sensitivities

Food allergies- would love for there to be signage, and sensory processing- have vestibular play is welcome

Equipment needs to be accessible for those with motor planning issues

Sensory sensitivities and motor functioning

Sensory & vestibular play is very important.

Crowds are difficult.

Sensory input is important. Perimeter fence ensures safety

Neurological disorder

My son has never been a huge fan of playgrounds because he lacks the core muscle strength and balancing skills that are required to use most of the equipment on a regular playground. He always gravitates towards the swings or sandbox, because they are easier for him.

Uneven surfaces prevent our child's access to playground/parks. Parking is critical as long distances to walk creates a barrier. Swings styled for individuals with disabilities must be hung at a height that allows a single person to be able to help our family member get onto the swing seat (swings that are too high are impossible to lift our individual into to sit. Paths thru a variety of accessible play features should have solid footing, handrails for slopes & be wide enough to allow 2 individuals in wheelchairs to easily pass each other... Steps are a barrier, so accessible ramps are needed. Would enjoy a variety of equipment that gives different types of sensory input- proprioceptive, vestibular. A wheelchair swing would be nice for anyone arriving in a w/c.

My nephew lives nearby and is wheelchair bound. Unitary surface and accessible equipment are essential.

a bathroom and no pets allowed

Wheelchair access, lots of space and restrooms

Splash pad

Several different options, which I believe are already in consideration.

A fence, safe padding and accessories

Wheelchair accessibility

Options for multiple age levels.

Equipment for a wide age range

Fencing would be very helpful

Options for wheelchair users to play without having to be transferred out...swings, marry-go-round, or any options for movement while still in the wheelchair.

a beer garden

safety and walk/bike accessible

The swings where an adult and child can ride on the same swing together

Just signage to tell folks that ALL kids can play on the playground.

Scenery stuff, fence, changing table for bigger kids

A swing that the wheelchair can go on

Flooring that is even and easy to roll wheelchairs and strollers on. Fewer steps and more inclines.

Wheelchair accessible to moving parts

monkey bars and climbing equipment

Parking and bathrooms

Ramp to swing

Additional picnic/seating/maybe covered area

Sensory toys, spaces where he can play around others but still have space

Restroom

Restrooms, safety measures such as a perimeter fence, parking, different levels of equipment for all to enjoy

I don't have a child with disabilities but have cared for children with disabilities. I love that McFarland is doing this!

Adequate parking, security features to decrease chances of vandalism, 'buddy benches'...

A sensory area as well as shade

Bike rack(s); Multiple sunshade sails in different locations with picnic tables

Spaces for all kiddos with and without disabilities and all ages so families can play together

Bathrooms, picnic tables, shaded areas.

Shade

Things for All ages of children. Not just big kids

Safe access for children with physical differences.

Restrooms and picnic tables

A community swimming pool

Wheelchair accessible paths, equipment for wheelchairs without requiring we transfer child. Benches to rest and accommodate needs with changing table that could fit a 7-year-old

Soft rubber surfacing definitely helps and shade so that families can come during the quieter times of day without being burnt.

Most anything would be great. A full-on splash pad is more enjoyable if close

Green space for running, playing catch.

A spacious bathroom for changing diapers/clothes and an even rubber surface for running.

Brail. Equipment that makes noise. Musical or other

A variety of playground equipment for a wide range of ages.

Bathrooms for sure for younger children

Easy to get on

Perimeter fence with limited entrances/exits

Happy Hour

parking restroom/water

Food allergy signage, lots of kinds of interactive play

Benches surrounding the park for sensory break and shaded areas for break from the hot sun

Crowds are difficult. Pictures on Facebook would help to comfort ahead of time.

Fence, water play, vestibular and physical sensory input

Shade is a big thing otherwise we are limited to early or late in the day due to having multiple melanomas removed

Water play keeps him engaged and relaxed for hours

My son has medical needs that would require a bathroom for most visits. Picnic tables in the shade would also be helpful to manage medical needs.

Accessible swing or gentle gliding play equipment. Parents with different abilities need benches or picnic tables. Color coded sections to depict different areas usage: Adequate space to maneuver around equipment. A basketball hoop at the level for a wheelchair user. Avoid placement of horizontal rails that limit visual fields of wheelchair users. Keep visual lines open for caregivers to observe across play area. Tactile signage and communication board with descriptive language for nonverbal users to express themselves. Colors can signify different usage areas or quiet zones/ active.

Necessary addition to our community. We need to give the residents opportunities in our community to access. Our world is changing with residents staying at home for work. These considerations need to be addressed.

Thank you for asking us!

Subcommittee for disabilities

Maintenance costs need to be very low. There are many options that don't require active regular upkeep and repair. This is a priority to me. The building toys seem like they would disappear quickly. Site C suggests a larger park master plan and new school. Without that info, site C makes no sense

Thank you for doing this project! It sounds Amazing!

We are very excited for an inclusive playground!

I appreciate the community survey! This is a great way to get input! I hope that we can move forward with a water option in town soon. All of our surrounding communities have them and it would be nice to stay in town for water play.

The presentation was wonderful, but we need to keep spending under control for this project, especially to look towards a family-oriented water facility (which obviously can be made accessible as well) in the near future.

Great idea

Thank you

We don't have younger children, but I feel this is an important need for the village and especially for those who are at a disadvantage for using traditional park equipment.

We will be grandparents and feel this is a need

Thank you!

We would like a community swimming pool

Thank you for doing this!

Thank you for all your hard work in making this a reality.

Thank you for considering Cedar Glade. It is a large park with very little equipment. Even if this much needed park goes to another location, please consider minor upgrades and improvements to Cedar Ridge park.

abilities and needs change with age

Thanks for working so hard to get community input

Shade will be important as well

Thank you taking the time so ensure all are included!

I think the park is a great idea and a much-needed resource for many families.

Having a park located with room to expand and adequate parking is essential. However, I'm concerned that putting park on Siggelkow across the interstate is an isolated placement that doesn't capture the Village feel and might be so removed it's at risk for vandalization. Wasn't there room near the ballfields on MN? Please remember to include equipment that adults with disabilities can use as small children have access to equipment at elementary schools, while larger individuals have few opportunities. Also including features for all abilities will make for a more inclusive experience, rather than segregating those with disabilities.


VILLAGE OF
McFarland
SUMMARY SHEET

MEETING DATE: Wednesday, May 31, 2023

SECTION: Business

DEPARTMENT: Administration

CONTACT: Matt Schuenke, Village Administrator

AGENDA ITEM: Discussion and update regarding the McFarland Municipal Center Master Plan.

PREVIOUS ACTION:

None.

ISSUE SUMMARY:

The Village has completed a new master plan for the McFarland Municipal Center Campus. This plan provides two options to improve the Municipal Center and also surrounding areas. Additionally, this project will incorporate the Youth Center into the Facility within combined operations of the Library under the Community Center concept. [Please click on this link to view the plan](#) and we will present its contents in the meeting.

FINANCIAL/BUDGET IMPACT:

Cost implications are included within the draft report.

VILLAGE PLAN REFERENCE:

None.

ORDINANCE REFERENCE:

None.

BOARD, COMMISSION OR COMMITTEE RECOMMENDATION:

Presented as an update for discussion.

ATTACHMENTS:

None


VILLAGE OF
McFarland
SUMMARY SHEET

MEETING DATE: Wednesday, May 31, 2023

SECTION: Business

DEPARTMENT: Administration

CONTACT: Matt Schuenke, Village Administrator

AGENDA ITEM: Discussion of topics of mutual interest and updates of local initiatives to the School District of McFarland and Village of McFarland.

PREVIOUS ACTION:

This item has been a standing topic held at each of the last meetings.

ISSUE SUMMARY:

The main intent of these meetings is for the School District and Village to meet in a small group setting to talk about areas of overlap in which we can work together. Past meetings have outlined a number of topics where that might be possible.

FINANCIAL/BUDGET IMPACT:

None.

VILLAGE PLAN REFERENCE:

None.

ORDINANCE REFERENCE:

None.

BOARD, COMMISSION OR COMMITTEE RECOMMENDATION:

No action required on this item.

ATTACHMENTS:

None