

**PARKS, RECREATION,  
& NATURAL  
RESOURCES  
COMMITTEE**

**Thursday, January 28, 2021**

**6:30 PM**

**McFarland Municipal Center**  
*Community Room*

AGENDA

You are invited to this meeting through a Zoom webinar. The Public is strongly encouraged to watch and participate in these meetings remotely through either the webinar or telephone options listed below.

PLEASE CLICK THE LINK BELOW TO JOIN THE ZOOM WEBINAR:

<https://us02web.zoom.us/j/82137594568>

Or by Telephone: +1 (312) 626-6799

Webinar ID: 821 3759 4568

1. CALL TO ORDER, ROLL CALL.
2. PUBLIC APPEARANCES.
  - a. This is an opportunity for members of the public to address the Village Board. Please remember this is a virtual meeting conducted through the Zoom online meeting platform. Zoom meeting attendees wishing to address the board may do so using the Question and Answer feature within the Zoom online meeting platform. You may state your name, address, and provide your comments to the board for their consideration. Members of the public who are present in person and wish to address the board should fill out a public comment form and turn into the meeting chairperson. Members of the public may speak during public appearances or during their selected agenda item as they designate on the public comment form. Please adhere to the 3-minute time limit. Additionally, you may send your public comments to [cassandra.suettinger@mcfarland.wi.us](mailto:cassandra.suettinger@mcfarland.wi.us) to be included as part of the meeting.
3. APPROVAL OF MINUTES.
  - a. Discussion and action regarding the minutes from the Parks, Recreation & Natural Resources committee meeting held on November 19, 2020.
4. BUSINESS.
  - a. Discussion and action to make a recommendation to the Village Board to accept the Inclusive Playground Master Plan.
  - b. Discussion regarding master planning projects at the Community Park and McFarland Park.
  - c. Discussion regarding small project planning within the park system.
  - d. Discussion regarding the development of future volunteer opportunities within the park system.

e. Presentation of the Parks Superintendent's monthly report.

5. SCHEDULE NEXT MEETING DATE.

a. Thursday, February 25, 2021 at 6:30 p.m.

6. ADJOURNMENT.

This meeting notice constitutes an official meeting of the above referenced group and was posted in accordance with all applicable laws related to Open Meetings Law. It is possible that members of and possibly a quorum of members of other governmental bodies of the municipality may be in attendance at the above stated meeting to gather information. No action will be taken by any governmental body at the above stated meeting other than the governmental body specifically referred to above in this notice. Upon reasonable notice, efforts will be made to accommodate the needs of disabled individuals. For additional information or to request this service, contact the McFarland Municipal Center at (608) 838-3153 or [cassandra.suettinger@mcfarland.wi.us](mailto:cassandra.suettinger@mcfarland.wi.us).

**Parks, Recreation, and Natural Resources Committee  
Meeting Minutes (DRAFT)  
November 19, 2020**

**1. CALL TO ORDER, ROLL CALL.** Meeting was called to order at 6:30 p.m. via Zoom by Village Trustee and Chair Carolyn Clow. Roll call: Clow, Clair Utter, John Feldner, Sarah Kuba, David Wilson, Chuck Rolfsmeyer, Darrell Waldera, Katharine Pease, Dan Kolk, Andy Jakubowski.

Staff present: Matt Schuenke, village administrator; Sayer Larson, Parks Superintendent; and Phil McDade, public works staff.

**2. PUBLIC APPEARANCES.** None.

**3. APPROVAL OF MINUTES.**

**a. Discussion and action regarding the minutes from the Parks, Recreation, and Natural Resources meeting held on October 22, 2020.** Clow motioned, Kuba seconded, to approve the minutes of the meeting held on September 24, 2020. Motion approved 8-0-0.

**4. BUSINESS.**

**a. Presentation and discussion regarding draft concept plan for the development of an inclusive park at Cedar Ridge Park.** Kerry White of Learning Landscape Designs presented information on a draft concept plan for an inclusive park at Cedar Ridge Park. The park would include play equipment and amenities not found in other village parks, and would likely need a gated entrance and to be fenced in. Estimated cost of the project would be \$1.56 million. The committee took no action on the agenda item.

**b. Discussion regarding 2020 park projects and plans for 2021.** The committee discussed park planning for the 2020-2024 program years with Schuenke. Clow said she would work with Schuenke and Larson to discuss prioritizing projects for a later presentation to the committee. The committee took no action on this agenda item.

**c. Presentation of the Parks Superintendent monthly report.** Larson provided an update on park activities, including forestry work throughout the village, park signage improvements, progress on the dog park shelter, McDaniel Park shelter improvements, and winterizing park facilities.

**5. SCHEDULE NEXT MEETING DATE.**

**a. Thursday, December 17, 2020 at 6:30 p.m.**

**6. ADJOURNMENT.** Clow motioned, Jakubowski seconded, to adjourn the meeting. Approved by unanimous consent. Meeting adjourned at 8:42 p.m.

  
**McFarland**  
**SUMMARY SHEET**

**MEETING DATE:** Thursday, January 28, 2021

**SECTION:** Business

**DEPARTMENT:** Public Works

**CONTACT:** Matt Schuenke, Village Administrator

**AGENDA ITEM:** Discussion and action to make a recommendation to the Village Board to accept the Inclusive Playground Master Plan.

**PREVIOUS ACTION:**

Presentation was made by the Consultant at our meeting on November 19, 2020.

**ISSUE SUMMARY:**

Included within your packet is the final report for the development of an Inclusive Park within our park system. A final presentation was made on this report at our last meeting, and the final formality to complete the project is to accept the work that has been completed. We would complete this task as a recommendation to the Village Board.

Taking a step back, planning projects such as this are meant to help provide conceptual frame of reference around an idea. Typically there is an idea or collection of ideas that are desired to advance, a plan can be developed to figure out general particulars as to how that idea might come to fruition. Upon its completion, the plan would need to transition into the design phase to specifically in great detail how it is to be constructed. Once the design is done, it can proceed to implementation and then utilization upon completion of that final work.

Idea > Plan > Design > Build > Use

This is the customary progression of events on how an idea comes to life. The planning work is crucial to generally laying out what our options are, possible timelines, cost implications, location alternatives if applicable, and other important items for consideration. The information it provides can be used to aid in how and when the project can move forward while still affording us flexibility in the design process to flush out any remaining details.

This plan and idea is no different. As noted we remain early in its development but the information provided is critical in deciding next steps. In this case, the Inclusive Park plan provides a baseline assessment to give perspective of all of our parks for ADA compliant, provides three location alternatives (small, medium, and large), and more specifically provides a conceptual site plan to follow at one of these locations. When we transition into design for the project, we would pick up where the plan left off to evaluate the assumptions made and start to piece together its elements. As part of that, everything from the size of the project to its location could be revisited as the project continues to develop through the various steps. As such, accepting the plan does not lock us in to immediately move into design phase following every



aspect of what the plan recommended. That would be more of an expectation for a project following the completion of its design, but as noted we are not quite that far yet.

We have work yet to do in order to fit this project in with others as far as future implementation is desired. Before we had an idea, now we have a plan and the information contained within that plan will aid us in that work.

**FINANCIAL/BUDGET IMPACT:**

The costs for plan development were incurred and paid for within the 2020 Budget.

Costs as it relates to the proposed improvements are included within the plan document.

**VILLAGE PLAN REFERENCE:**

**2019-2023 Outdoor Recreation & Open Space Plan** - Please click on this link for reference to the full plan.

There are four goals from this plan as follows (page 1):

- *To provide permanent open space throughout the Village for outdoor recreation, to accommodate a variety of recreational uses for all ages and abilities, provide environmental protection and to encourage the same within neighboring towns -* Without question, the development of an inclusive park speaks volumes to providing for outdoor recreational opportunities for people of all ages and abilities. This plan was specifically geared towards providing for play and discovery in a multitude of ways regardless of ones age.
- *To evaluate proposed land to be dedicated for park and open space purposes as new subdivisions develop for contributions to the quality as well as to the quantity of the Village's park and open space system -* We are working within existing parks; however, the nice thing this plan does is call attention to a wide variety of opportunity that could be duplicated or integrated into new parks. We saw that through our discussion at the park proposed in Rosewood Fields Subdivision. The plan could be used as a reference for future park development as opportunities develop.
- *To recognize that the natural environment is an integrated unit comprised of interacting land, water and air resources, and to ensure that the health and stability of this resource system are maintained -* Several elements of this plan and dedicated amenities are meant to be natural as part of their inclusion and use. This helps people to connect more closely with the natural themes or elements, and allows for better fit within the park.
- *To regard all land as an irreplaceable resource, and to ensure that its use does not impair its value for future generations -* The development of this type of park was regarded as highly desirable and could be a destination for many families in and out of McFarland both now and into the future.

Cedar Ridge Park is identified as a preferred location for this amenity. Recommendations for its future development are listed on page 33 of this plan. Notable elements of overlap include "replace gazebo, provide park benches, add additional playground equipment, and explore the



addition of restrooms and water fountain." The plan as presented for this location would address all of these elements by providing new covered shelters, additional benches, all new playground equipment, and support facilities such as bathrooms, drinking fountains, and off street parking.

The park is at such an age the current equipment would be a candidate for replacement in lieu of these improvements as proposed.

The plan presented for an Inclusive Park is consistent with our Outdoor Recreation & Open Space Plan, and when updated next could be further incorporated within.

**ORDINANCE REFERENCE:**

None.

**BOARD, COMMISSION OR COMMITTEE RECOMMENDATION:**

Following discussion as needed, it is recommended that the Committee take action to recommend to the Village Board to accept the Inclusive Playground Master Plan.

**ATTACHMENTS:**

1. McFarland\_FinalReport (1)



# Village of McFarland Inclusive Playground Master Plan

## Final Report

Prepared By:  
Learning Landscapes Design LLC  
262.707.8004  
12/14/20





# TABLE OF CONTENTS

Introduction.....	4
Background Review and Site Inventory.....	5
Site Development Discussion.....	15
Design Approach Options.....	17
Community Involvement.....	23
Concept Design.....	24
Appendix A: Special Needs Playground Survey.....	34
Appendix B: Special Needs Playground Survey Results.....	37

## Partnerships:

Village of McFarland

### CoreTeam:

Matt Schuenke  
Jim Hessling  
Sayer Larson  
Andrew Bremer  
Heidi Wisniewski  
Melissa Wiswell  
Rachel Jones

### Parks, Recreation, and Nature Resource Committee:

Carolyn Clow  
Clair Utter  
John Feldner  
Chuck Rolfsmeyer  
Katharine Pease  
Darrel Waldera  
David Wilson  
Andy Jakubowski  
Sarah Kuba  
Dan Kolk

Kerry White

Project Manager, Learning Landscapes Design

Mara Kaplan

Inclusive Play Specialist, Let Kids Play

## Introduction

The Village of McFarland's diverse system of parks and open space exemplifies the inviting, dynamic, and diverse nature of the community. Open spaces range from small tot lots, neighborhood parks, community parks to conservancy areas. All which offer a variety of different recreational opportunities. As the Village continues to grow the McFarland Park System continuously strives to improve the quality of life of their community through nature connections and park improvements. Through planning efforts and community surveys the Village has identified the need for an all accessible and all inclusive playground within their community. Currently there is no playground within the park system that is solely dedicated to this purpose.

Through a competitive proposal process the Village hired Learning Landscapes Design and sub-consultant Let Kid's Play! to complete the planning services for an inclusive park. An inclusive playscape addresses the needs of all people including those who have autism, intellectual disabilities, hearing impairments, cerebral palsy, spina bifida, and other disabilities. It also addresses the needs of typical children. An inclusive playground accommodates everyone and challenges them at their own developmental level. Learning Landscapes Design is a landscape architecture firm that strives to create spaces for people of all ages and abilities to play, interact, and learn by putting children and their families at the center of the community and building amenities that attract them and meet their play and learning needs at any level.

This report covers the tasks and outcomes from the planning process. Each task is described in further detail throughout the body of this report. The execution of some of the tasks were modified from those outlined in the original proposal in order to meet healthy and safety recommendations related to Covid-19. The planning services are as follows:

- Meet with Village Staff (digitally) to review current conditions and existing amenities or site constraints, and receive direction regarding site-specific requirement.
- Background review and site inventory.
- Evaluate up to three potential locations within the current parks system that could allow for the development of the improvements generated through the meeting and public input process.
- Prepare and conduct public input efforts in order to solicit viewpoints from the community on the improvements.
- Work with Village Staff and the Parks Committee to inventory the extent of park development and amenities desired for the project.
- Prepare conceptual plans for discussion, review, and presentation.
- Generate plans for implementation of the project.
- Prepare final report including renderings and a cost estimate.

A CORE team was assembled to attend meeting, participate in planning discussions, and make design decisions. The CORE team consists (4) Village of McFarland Parks and Rec staff members and (3) community members who have experience working with children of varying ability either personally or within the McFarland school district.



## Background Review and Site Inventory

Learning Landscapes Design team visited 15 public playgrounds within the Village of McFarland's park system to identify play or accessibility gaps and opportunities. Additionally, three inclusive playground within the Madison Metropolitan area were reviewed to provide examples of inclusive playgrounds within the surrounding communities. Each playground's accessibility was evaluated based on the Guide to ADA Accessibility Guidelines for Play Areas and Learning Landscapes Design's professional judgment and experience in designing inclusive playgrounds. We evaluated each park on the following criteria:

### 1) Access to the Playground

- Are there designated accessible parking spaces available?
- Is there an accessible route to get to the playground?
- Does the playground contain inclusive play surfacing? This includes unitary surfacing such as pour-in-place rubber, rubber tiles, or artificial turf.

### 2) Site Support Features

- Is there an accessible restroom?
- Are there accessible furnishings?
- Is the play area fenced in?

### 3) Playground Components

- Types of ground level components
- Is access to the playground equipment by ramp or by transfer station?
- What are the best inclusive features offered at the playground?

### 4) Types of Play

- What types of play are offered?

In addition to the criteria listed above, we provided a descriptions of each playground and a few small scale recommendations on how to improve the accessibility of each playground. All of this information was put together in a matrix in order to compare and understand the accessibility needs of each individual park and the park system as a whole. See the following pages for a map of the McFarland parks and open spaces, the inventory matrix, and images of each of the existing playground sites.

Through this exercise we were able to identify a few keys accessibility and inclusive design gaps within the current park system. Those gaps and recommended playground elements include:

- Loose Parts or Constructive Play area - Loose Parts are simple movable objects that are open ended in their use and form. These types of materials allow children to move, manipulate, and control objects and materials through play. A great example of loose parts play includes sticks, stumps, limbs, wood planks, and tree cookies for children to build forts or set up imaginative play elements like a market or house.
- Planting - Planting areas provide rich opportunities for sensory input, imaginative play, and education. Planting area allows children to run their hands through many textures or listen to the different sounds the plants make on a windy day. Appropriate planting areas spark children's imaginations. Are they pioneers exploring a new land or pretending to be picking ingredients for a salad? Planting areas provide opportunities to observe birds, bees, and bugs in their natural environment.

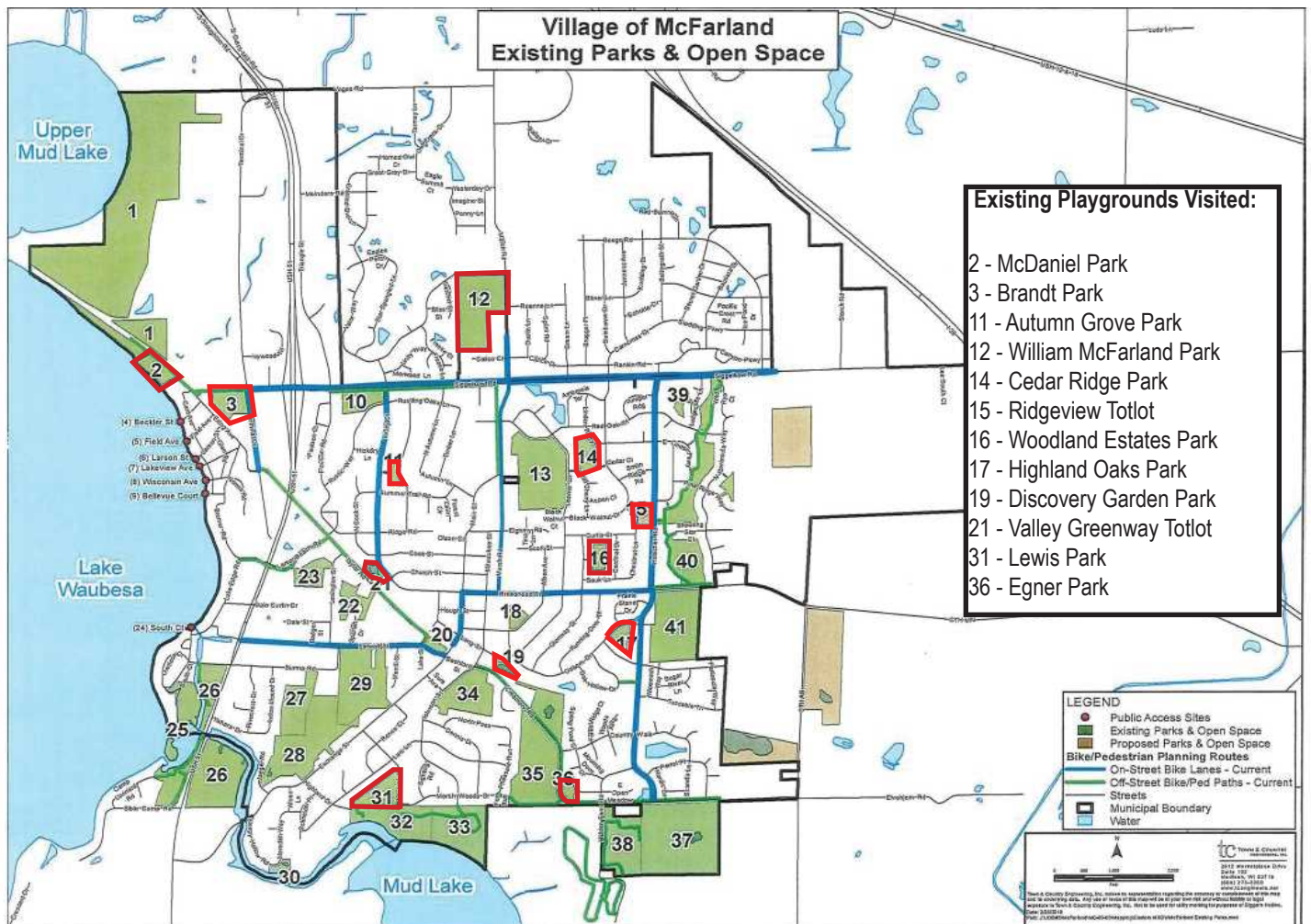


- **Natural Elements** - Natural elements include logs, boulders, planting areas, and wood components. When children are exposed to natural elements they tend to focus more on the task at hand. For example when climbing a boulder mound the experience is different every time. A child needs to be more deliberate and cognizant of their hand and foot placement. Natural elements provide a connection to nature with varying textures that evolve and change over time.
- **Non-Prescribed Elements** - These are play elements that are open-ended, meaning there is no defined way to interact with the component. A series of logs and boulders for example can become an obstacle course, a space to perch and gather with friends, a balancing exercise, or a climbing challenge.
- **Water Play** - Water's dynamic nature makes it an excellent sensory experience and captives uses of all ages and abilities. When paired with a hand pump and elevated water channels users are able to control the amount of water available and can manipulate the course of the water running down the channels.



### Map of McFarland Parks

Below is a map of the parks and open spaces within the Village of McFarland. All sites visited are highlighted in red.



Village of McFarland - Inclusive Playground  
Level of Service Inventory

Village of McFarland Parks

Park	Playground Description	Access to the Playground			Site Support Features			Playground Components			Type of Play	How to Improve the Site
		Accessible Parking	Accessible route to playground	Inclusive Play Surfacing	Accessible Restroom	Accessible Furnishings	Fenced Play Area	Types of Ground Level Components	Access by Transfer or Ramp	Best Inclusive Features	Variety of play types offered	
<b>Autumn Grove Park</b>	One play structure with multiple climbing options, tunnel, bridge, and slides. Additional components include a bending balancing beam, four swings (two belt swings and two bucket swings) and sand digging area.	● Street Parking, no designated ADA parking	● No Path	● Wood Chips	● No Restroom Facility	● (2) Benches with backs located within chips area	● No	● (3) Sand diggers, swings, balancing beam (none accessible)	(1) Transfer Station, access to entire structure	Sand digging area, Access Ramp	Majority physical play with sensory play in the sand digging area and musical panel.	Provide a paved path to the playground ramp and sand digging area from the road. Add an accessible sand digger. Add an accessible swing in a new location along an accessible path.
<b>Brandt Park</b>	One play structure with multiple climbing options and slides and sand digging area.	● Street Parking with designated ADA parking	● Path is paved but not accessible	● Wood Chips	● Yes	● None	● Fenced along road side and residential side	● (4) music panel, stools, steering wheel, and sand diggers (none accessible)	(1) Transfer Station, access to one slide	Sand digging area, Access Ramp	Majority physical play with sensory play in the sand digging area and musical panel.	Providing a fully accessible pathway to the playground is going to be difficult with the existing grading. Instead focus on providing a wider range of play by adding a spinner and more imaginative play elements.
<b>Cedar Ridge Park</b>	One small play structure with bridge, overhead bars, and a double slide. Additional components include a spring rocker, four swings (two belt swings and two bucket swings), a net climbing wall, overhead rings, and sand digging area	● Street Parking, no designated ADA parking	● No Path, however the play area is very close to the existing path and could be easily connected	● Wood Chips	● No Restroom Facility	● (1) Bench with backs located within grass	● No, Private residential fences on one side	● (2) Spring rocker and sand diggers (none accessible)	(1) Transfer Station, access to double slide	Sand digging area	Mostly physical play with sensory play in the sand digging area	This playground is a good candidate for complete replacement. If replacement is not an options, consider adding a short access path to the playground. There is a lot of underutilized play scape, add accessible ground level components like spinners, balancing bar, and steppers
<b>Discovery Garden Park</b>	One rope climbing structure with slide. Additional components include a camp themed climbing area with log steppers and a grass play mound	● Parking Lot with designated ADA parking	● Yes	● Pour-In-Place Rubber	● Yes, access to restrooms in library during business hours	● (5) Benches with backs and armrest on accessible route ● (2) non-ADA picnic tables on a non-accessible route	● No	● (5) Log climber, log steppers, climbing tent, lowest hammock of rope climber, grassy play hill (all accessible)	(0) No transfer stations or ramps	Surfacing, Grassy Play Hill, Camp Theme Climbing Area, Rope Climber Hammock	Physical Play and Imaginative Play	This is a great play space! A couple minor improvements include adding a couple musical instruments for sensory play and providing at least one ADA picnic table with paved access.
<b>Egner Park</b>	Two playground structures. The larger structure has hex cube climbers with slide, stepping pads, and overhead bars. The smaller structure has three short slides, a climbing net, and overhead bars. Additional components include, seesaw, standup spinner, and 5 swings (two belt swings, one ada swing, one double-occupancy swing, and one bucket swing)	● Street Parking, no designated ADA parking	● No Path	● Wood Chips	● No Restroom Facility	● None	● No	● (5) Seesaw, stepping pads, stand up spinner, accessible swing, bottom hex cubes (none accessible)	Larger Structure: (0) Transfer Stations, Smaller Structure: (1) Transfer Station	Spring SeeSaw, ADA swing,	All Physical Play	This playground could be a great accessible play space with a few key improvements. Add an accessible path to the play area from the main pathway. Consider a pour-in-place rubber path to the ground level components. Replace the stairs on the smaller structure with an accessible ramp. To increase access to the park, parking stalls could be added along Creamery Rd. Provide accessible picnic tables under the overhang and accessible benches with backs throughout. <b>Good park to prioritize site improvements.</b>

Legend: ● = most inclusive, ● = somewhat inclusive, ● = least inclusive \* Ratings are based on professional judgement

Village of McFarland - Inclusive Playground  
Level of Service Inventory

Village of McFarland Parks

Park	Playground Description	Access to the Playground			Site Support Features			Playground Components			Type of Play	How to Improve the Site
		Accessible Parking	Accessible route to playground	Inclusive Play Surfacing	Accessible Restroom	Accessible Furnishings	Fenced Play Area	Types of Ground Level Components	Access by Transfer or Ramp	Best Inclusive Features	Variety of play types offered	
<b>Highland Oaks Park</b>	One play structure with multiple climbing options, overhead bars, and slides. Additional components include 4 swings (two belt swings, two bucket swings), 2 spring rockers, a sand digging area with diggers.	● Street Parking, no designated ADA parking	● Yes	● Wood Chips	● No Restroom Facility	● (2) Accessible bench with back	● No	● (2) spring rockers and sand diggers (1 digger is accessible)	(1) Transfer Station, access to entire structure	Accessible digger, paved access to the playground	Mostly physical play with sensory play in the digging area	Add a short accessible path to the picnic shelter with atleast (1) ADA picnic table. Expand the play area to include an accessible swing or group spinner with accessible surfacing. Add some musical instruments within the concrete pad. Replace mulch with sand in digging area. <b>Good park to prioritize site improvements.</b>
<b>Lewis Park</b>	Two climbing structures. The large structure has multiple climbing options, over head bars, bridge, tunnel, net climber, and slides. The smaller structure has two slides and one climbing option. Additional components include 8 swings (six belt seats and two buckets seats) and sand digging area	● Street Parking nearest to playground, parking lot with accessible stall on other side of park	● No Path	● Rubber Mulch, wood chips, and sand	● No Restroom Facility near playground. Accessible restroom on other side of park.	● (2) Bench with back and armrest, (2) Bench with back, no armrest. All located in rubber mulch surfacing	● No	● (6) 3 Activity Panels, Steering Wheel, Bells, sand diggers	Larger Structure: (1) Transfer Station. Smaller Structure: (1) Transfer Station	Sand digging area, Access Ramp	Mostly physical play with sensory play in the sand digging area	Add an accessible path to the play area. Provide accessible play surfacing to transfer station and nearest slide. Move sand digging area close to the path, provide an accessible route and digger. Replace one of the swing sets with a group swing with accessible surfacing.
<b>McDaniel Park</b>	Two climbing structures. The platform structure has multiple climbing options, tunnels, and a slide. The net climbing structure has tunnels, spinning, and balancing. Additional components include 2 spinner seats, 4 swings (two belt seats, two bucket seats), and a sand digging area.	● Parking Lot with designated ADA parking	● Yes	● Rubber Mulch	● Public restrooms adjacent to the playground, but not accessible	● (2) Benches with backs located within rubber mulch area	● No	● (3) sand diggers, tunnel, spinners	Platfrom structure: (1) Transfer Station	Accessible digger in sand area, spinner seats	Mostly physical play with sensory play in the sand digging area	Replace rubber mulch with accessible play surfacing. Add an accessible swing. Include some imaginative elements like a playhouse or cozy space. <b>Good park to prioritize site improvements.</b>
<b>Ridgeview Totlot</b>	One small toddler climbing structure with two climbing options and a slide. Additional components include a spring rocker.	● Street Parking, no designated ADA parking	● No Path	● Sand	● No Restroom Facility	● None	● No	● (1) spring rockers (not accessible)	No ramp or transfer station	Spring rocker	Mostly physical play with sensory play in the sand surfacing	Focus on providing a wider range of play by adding sensory and imaginative elements like musical instruments and a play house or cozy space. There is enough space within the play area to add low steppers and balancing bar.
<b>Valley Greenway Totlot</b>	One toddler structure with tunnels, slides, and ladder. Additional components include 2 bucket seat swings.	● Street Parking, no designated ADA parking	● No Path	● Wood Chips	● No Restroom Facility	● (1) Benches with back and armrest, located within lawn	● Fenced on one side along water	● (1) tunnel (not accessible)	Platfrom structure: (1) Transfer Station	Access ramp and tunnel	All Physical Play	Provide an accessible path to the playground from the road. Add musical instruments and sand digging area for sensory play along path.
<b>William McFarland Park</b>	One structure with two climbing options and a double slide. Additional components include 2 spring rockers and sand digging area.	● Parking Lot with designated ADA parking	● Yes	● Wood Chips	● Yes	● None	● No	● (2) spring rockers and diggers (none accessible)	Platfrom structure: (1) Transfer Station	Paved access to playground, sand digging area	Mostly physical play with sensory play in the sand digging area	This playground is a good candidate for complete replacement. If replacement is not an options, consider providing an accessible sand digger and add musical instruments on the concrete pad.
<b>Woodland Estates Park</b>	One tall structure with multiple climbing options, slides, and tunnel. Ground level components include 4 swings (three belt seats, one bucket seat)	● Street Parking, no designated ADA parking	● No Path	● Wood Chips	● No Restroom Facility	● (1) Benches with back and armrest, located within chips	● No	● (2) activity panel (none accessible)	Platfrom structure: (1) Transfer Station	Access ramp and muscial panel	Majority physical play with a music sensory panel and imaginative play counter	Provide a paved pathway to the playground. Expand the playground to include a nest swing or spinners with accessible surfacing. Add a sand digging area with accessible digger along pathway.

Legend: ● = most inclusive, ● = somewhat inclusive, ● = least inclusive \* Ratings are based on professional judgement

Village of McFarland - Inclusive Playground  
Level of Service Inventory

Inclusive Playground Examples in Surrounding Communities

Park	Playground Description	Access to the Playground			Site Support Features			Playground Components			Type of Play	How to Improve the Site
		Accessible Parking	Accessible route to playground	Inclusive Play Surfacing	Accessible Restroom	Accessible Furnishings	Fenced Play Area	Types of Ground Level Components	Access by Transfer or Ramp	Best Inclusive Features	Variety of play types offered	
<b>Brittingham Park, Madison</b>	One large structure with multiple climbing options, slides, activity panels, overhead bars, spinning and balancing. The majority of the structures is accessible by ramps with additional transfer platforms within. Additional accessible components include group spinner, individual cozy spinner, double spring rocker, and 6 swings (two bucket seats, two belt seats, and two ADA seats)	● Yes	● Yes	● Pour-In-Place Rubber	● Yes	● (4) Benches with backs	● No	● (8) swings, spinners, spring rocker, tunnel, and 4 sensory panels	Ramps and multiple transfer stations	Surfacing, Group spinner, Individual spinner, Accessible swings, play structure ramp	Majority physical play with a few sensory panels	
<b>Elvehjem School, Village of McFarland</b>	Three play structures. Large structure with multiple climbing options and slides, activity panels, balancing, overhead bars, and spinning. A ramp provides access to the lower portion of the structure. Large structure is only partially within the accessible surfacing. Smaller structure with climbing options, tunnel, slide, activity panels and seating. Small structure is all within the accessible surfacing. Older Fire Truck themed structure, within the chips area, provides climbing options, slide, and imaginative play. Additional components include cozy dome climber, spinning seats, 10 swings (8 belt seats and 2 ADA seats). The ADA swing seats and 1 spinner is within the accessible surfacing.	● Yes	● Yes	● Pour-in-place rubber path with wood chips	● No Public Restroom	● (1) Accessible bench with back, (4) benches with backs in chips area.	● No	● (11) 7 activity panels, table and stools, dome hiding nook/climber, accessible swings, spinners	Large Structure: Ramp and (1) Transfer Station. Small Structure: (1) Transfer Station.	Surfacing, spinner seat, dome hiding nook/climber, accessible swings	Mostly physical play with sensory music panels and imaginative elements (Cozy dome climber, surfacing patterns, play counters, fire truck climber, house theme climber)	
<b>Elver Park, Madison</b>	Two play structures. One large structure with multiple climbing options, slides, balancing, overhead bars, cozy spaces, rocking, spinning, and activity panels. The majority of the structures is accessible by ramps. The smaller structure has a slide with climbing, sensory panels, and playhouse front for imaginative play. Additional components include group spinner, spring rockers, and 6 swings (two bucket seats, two belt seats, and two ADA seats).	● Yes	● Yes	● Pour-In-Place Rubber	● Yes	● (5) Benches with backs	● Partially fenced along road	● (10) steppers, spinners, swings, spring rockers, balancing bar, 5 activity panels	Large Structure: Ramps and (1) Transfer Stations. Small Structure (1) Transfer Station	Surfacing, Rocking Boat, Group Spinner, Swings, Cozy Spaces	Mostly physical play with sensory music panels and imaginative elements (Hiding nooks, surfacing patterns, play counters, alegator steppers, boat theme)	

Legend: ● = most inclusive, ● = somewhat inclusive, ● = least inclusive \* Ratings are based on professional judgement

## Park Inventory - McFarland Playgrounds

### Autumn Grove Park

One play structure with multiple climbing options, overhead bars, and slides. Additional components include 4 swings (two belt swings, two bucket swings), 2 spring rockers, a sand digging area with diggers.



### Brandt Park

One play structure with multiple climbing options, slides and sand digging area.



### Cedar Ridge Park

One small play structure with bridge, overhead bars, and a double slide. Additional components include a spring rocker, four swings (two belt swings and two bucket swings), a net climbing wall, overhead rings, and sand digging area. Play components are dated and minimal.



## Park Inventory - McFarland Playgrounds

### Discovery Garden Park

One rope climbing structure with slide. Additional components include a camp themed climbing area with log steppers and a grass play mound. Play space contains unitary surfacing for easy access to all.



### Egner Park

Two playground structures. The larger structure has hex cube climbers with slide, stepping pads, and overhead bars. The smaller structure has three short slides, a climbing net, and overhead bars. Additional components include, seesaw, standup spinner, and 5 swings (two belt swings, one ada swing, one double-occupancy swing, and one bucket swing). The park includes a number of inclusive play components.



### Highland Oaks Park

One play structure with multiple climbing options, overhead bars, and slides. Additional components include 4 swings (two belt swings, two bucket swings), 2 spring rockers, a sand digging area with diggers.



## Park Inventory - McFarland Playgrounds

### Lewis Park

Two climbing structures. The large structure has multiple climbing options, over head bars, bridge, tunnel, net climber, and slides. The smaller structure has two slides and one climbing option. Additional components include 8 swings (six belt seats and two buckets seats) and sand digging area



### McDaniel Park

Two climbing structures. The platform structure has multiple climbing options, tunnels, and a slide. The net climbing structure has tunnels, spinning, and balancing. Additional components include 2 spinner seats, 4 swings (two belt seats, two bucket seats), and a sand digging area.



### Ridgeview Totlot

One small toddler climbing structure with two climbing options and a slide. Additional components include a spring rocker



## Park Inventory - McFarland Playgrounds

### Valley Greenway Totlot

One toddler structure with tunnels, slides, and ladder. Additional components include 2 bucket seat swings.



### William McFarland Park

One structure with two climbing options and a double slide. Additional components include 2 spring rockers and sand digging area.



### Woodland Estates Park

One tall structure with multiple climbing options, slides, and tunnel. Ground level components include 4 swings (three belt seats, one bucket seat)



## Park Inventory - Inclusive Playgrounds in the Madison Area

### Brittingham Park

One large structure with multiple climbing options, slides, activity panels, overhead bars, spinning and balancing. Additional accessible components include group spinner, individual cozy spinner, double spring rocker, and 6 swings (2 bucket seats, 2 belt seats, and 2 ADA). Unitary surfacing, perimeter path, and benches provide a comfortable and easily navigated space.



### Elvehjem School

Three play structures. Large structure with multiple climbing options and slides, activity panels, balancing, overhead bars, and spinning. A ramp provides access to the lower portion of the structure. Large structure is only partially within the accessible surfacing. Smaller structure with climbing options, entirely within the accessible surfacing. Older Fire Truck themed structure, within the chips area, provides climbing options, slide, and imaginative play. Additional components include cozy dome climber, spinning seats, 10 swings. Although the unitary surfacing does not provide access to the entire play area, it does provide access to the accessible play components and a variety of types of play.



### Elver Park

Two play structures. One large structure with multiple climbing options, slides, balancing, overhead bars, cozy spaces, rocking, spinning, and activity panels. The majority of the structure is accessible by ramps. The smaller structure has a slide with climbing, sensory panels, and playhouse front for imaginative play. Additional components include group spinner, spring rockers, and 6 swings (two bucket seats, two belt seats, and two ADA seats). The playground provides unitary surfacing throughout the space, multiple levels of challenges, imaginative play, and wheel-chair accessible components that do not require transferring.



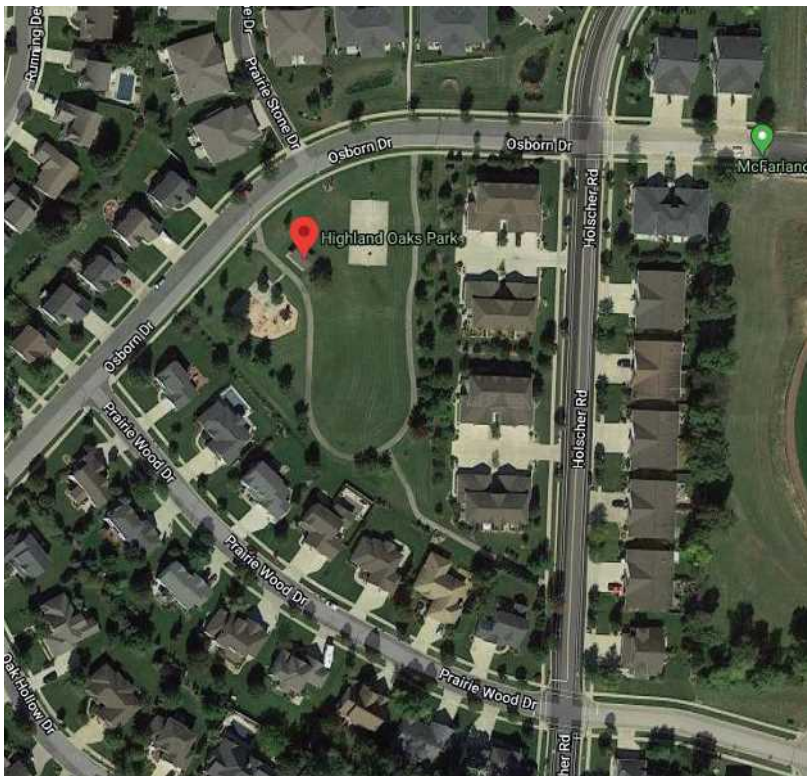
## Site Development Discussion

Following the inventory and analysis of existing playgrounds within the Village of McFarland, the CORE Team discussed a number of different potential development sites, and through discussions narrowed the options down to three: Highlands Oak Park, Cedar Ridge Park and Community Park.



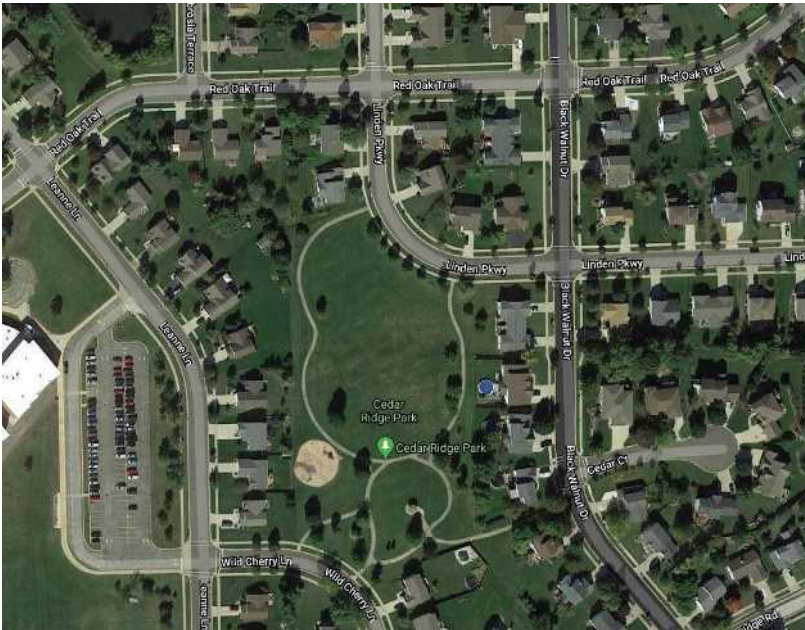
### Highlands Oak Park

This 2.25 acre neighborhood park located on the east side of McFarland is nestled in a neighborhood with sidewalks making it highly accessible to the nearby houses and visible from the road. The existing site is relatively flat making it easy to provide accessible routes throughout. The existing playground is dated and does not provide much variety in types of play. The playground equipment is a good candidate for replacement. The rest of the park site is open, allowing for expansion of the playground and space for parking and site support features including picnic shelter and restrooms.



### Cedar Ridge Park

This 3.9 acre neighborhood park located on the east side of McFarland, near the Waubesa Intermediate School. This park is connected to the nearby residents through an extensive web of sidewalks and is easily walkable from the nearby school. The park is large, open and provides safe walking routes and direct pedestrian access through the neighborhood. The gradual slope from the southeast corner to the northwest corner provides interest. We can use this slope within the playscape to create a more dynamic play environment with elevation changes and embankment slides while still providing accessible pathways. The existing playground equipment is minimal and aging making it a good candidate for replacement. The park has ample space for incorporating a small parking area and site support features.



### Community Park

The newly acquired property by the Village of McFarland. It is a 26 acre site located near the intersection of County Hwy AB and Siggelkow Road, far from residents and the Village core. This site is a blank slate meaning the playscape design would not be confined by space or existing features. A playground at this location could be folded into the master planning for this property that is currently underway by a separate consultant. The site has a steady slope from the west to the east and provides excellent views of the farmland and woodland landscape beyond. The grading would allow for a dynamic play environment with play components designed into the hillside.

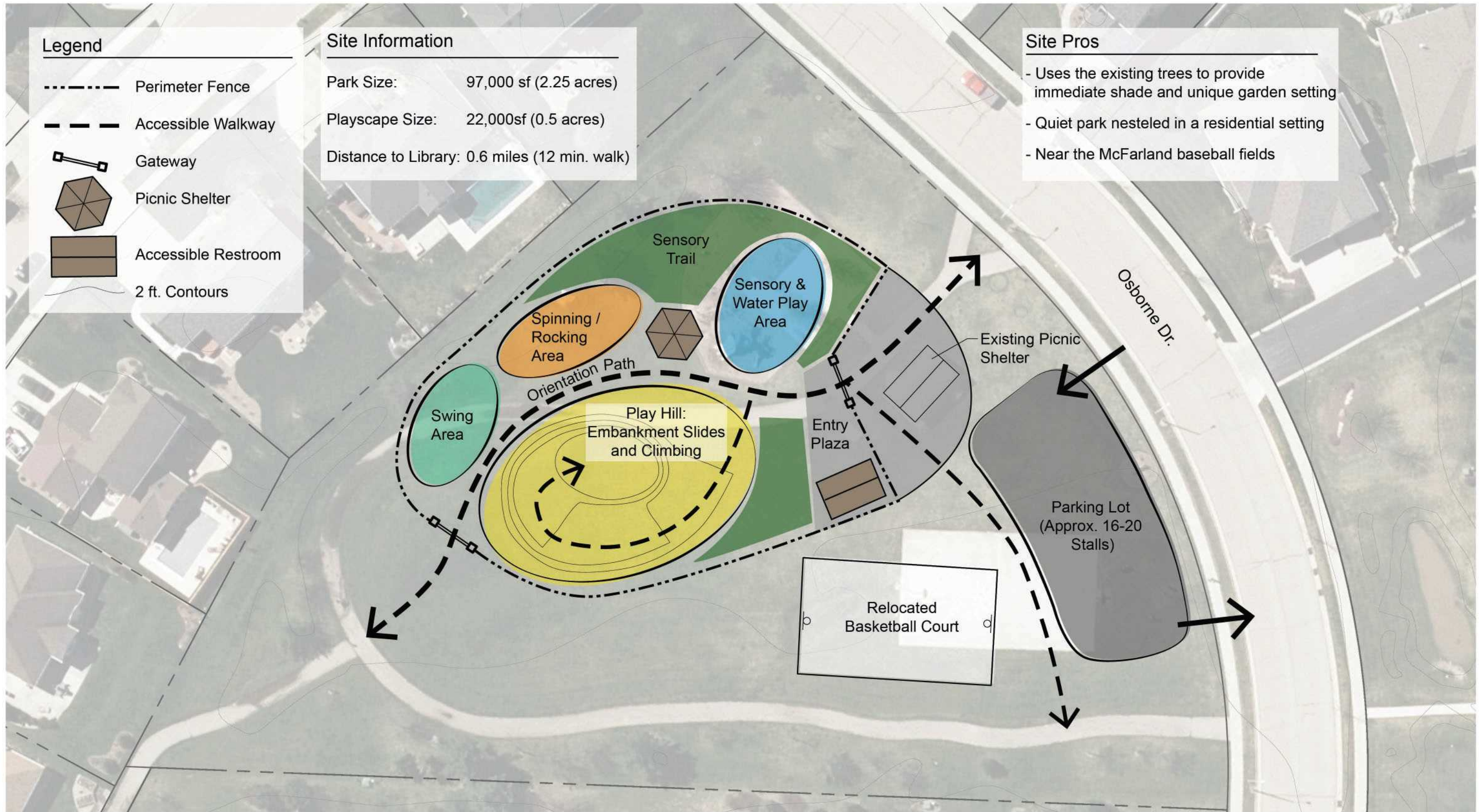


## Design Approach Options

The design team created a bubble diagram for each of the three potential development sites. These diagrams are an early level design tool that generally organizes the spaces and sizes of components with a low level of detail. The play areas within each of the bubble diagrams are based on conversations among the CORE team. Through the discussions it became clear that the core team preferred to focus on types of play that stimulate the senses and provide a variety of different play options. All playground options incorporate features allowing for the fundamental needs of families with children of varying abilities to be met, including restrooms, seating, shade, parking, and accessible routes and surfaces. Play options include physical play, quiet reflection, imaginative, loose parts, sensory (art, music, tactile), and water.

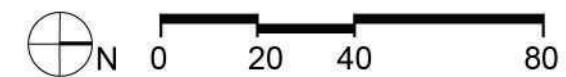
Below are the potential design options that were developed. The concept image boards exemplify the general look and feel for the playscape, the different types of play components, and support features.





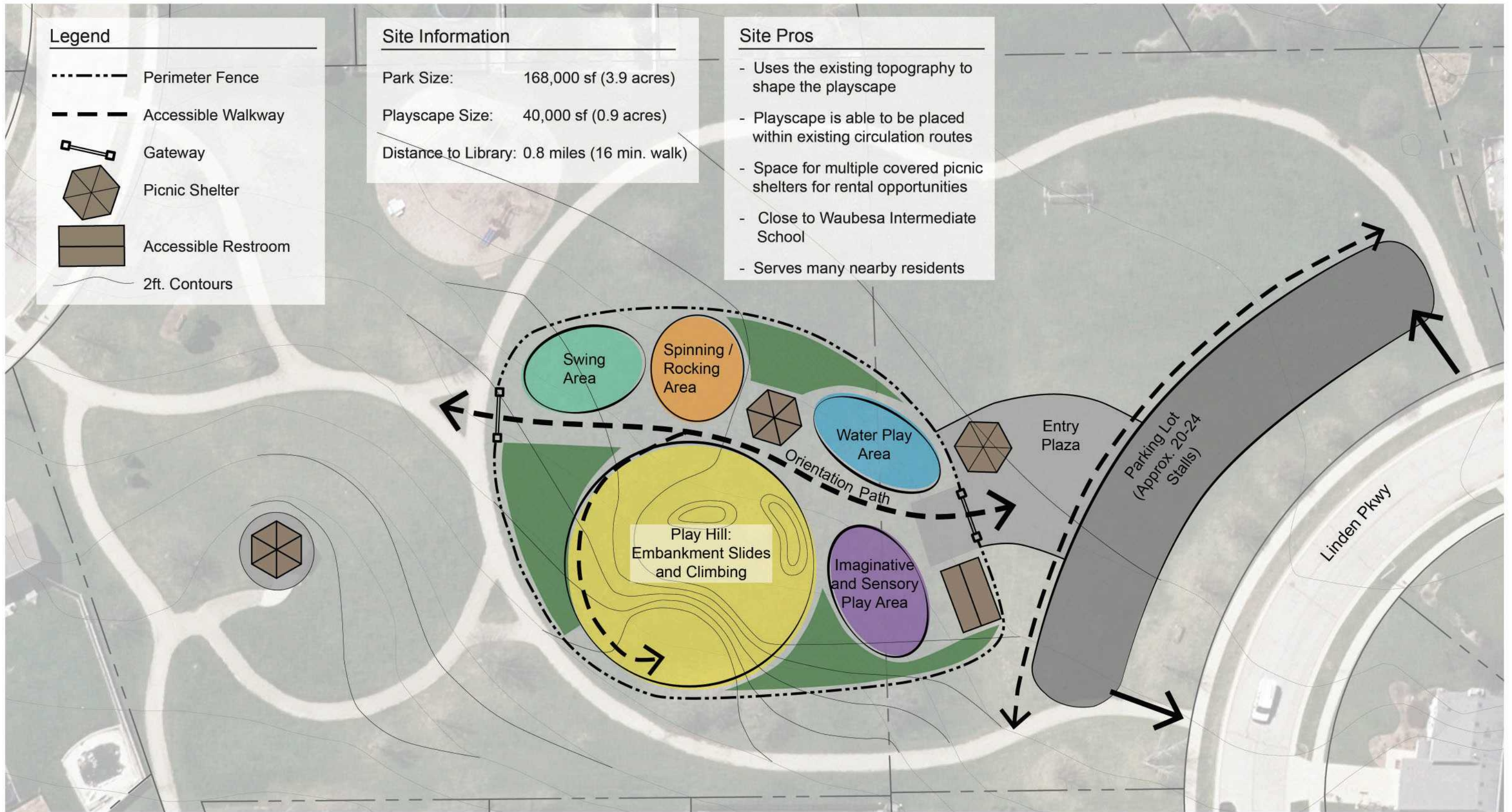
# Potential Development Site A: Highlands Oak Park

Village of McFarland - Special Needs Park



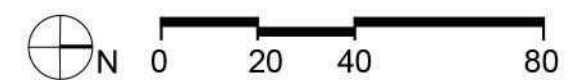
July 8, 2020





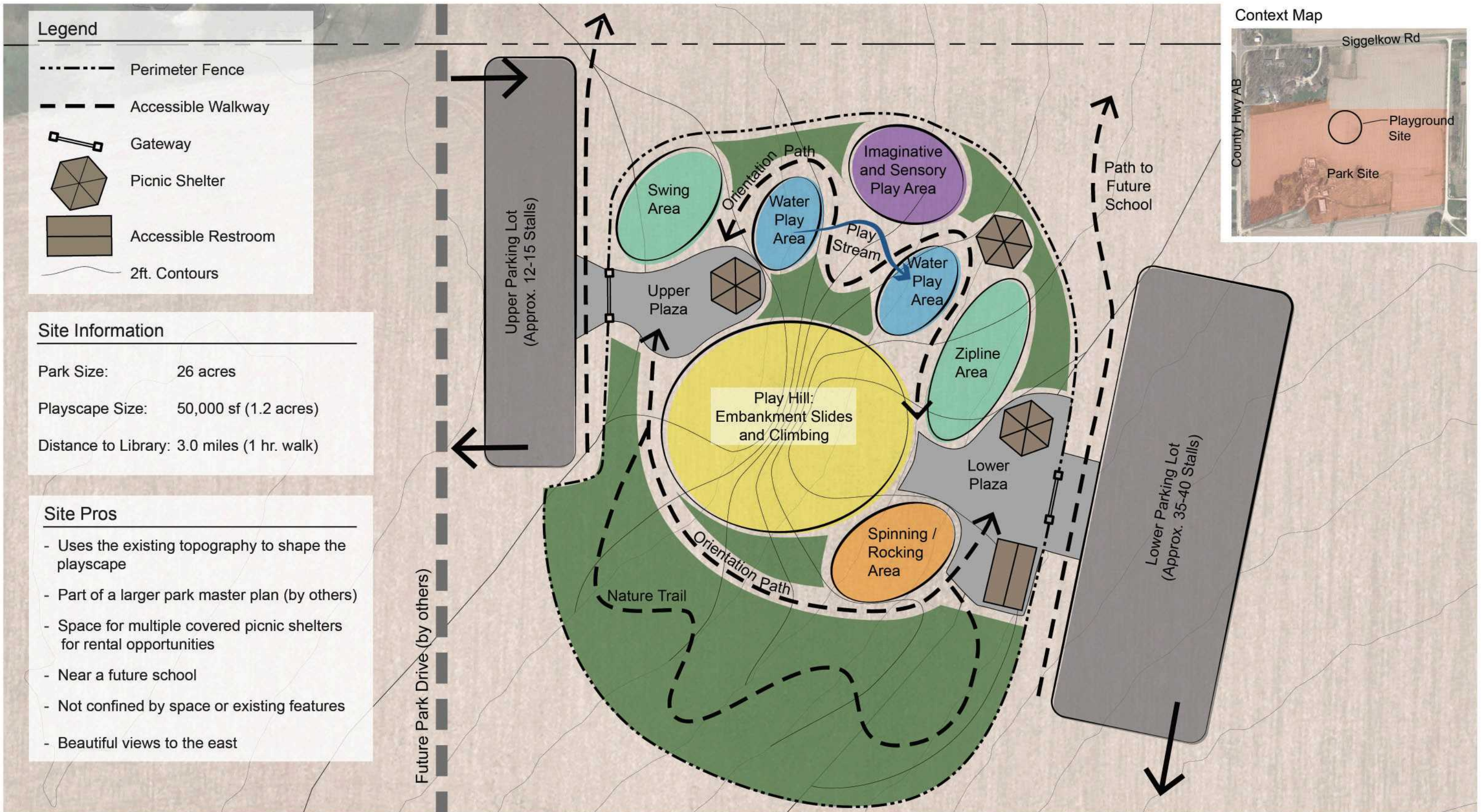
# Potential Development Site B: Cedar Ridge Park

Village of McFarland - Special Needs Park



July 8, 2020





**Legend**

- Perimeter Fence
- Accessible Walkway
- Gateway
- Picnic Shelter
- Accessible Restroom
- 2ft. Contours

**Site Information**

Park Size: 26 acres

Playscape Size: 50,000 sf (1.2 acres)

Distance to Library: 3.0 miles (1 hr. walk)

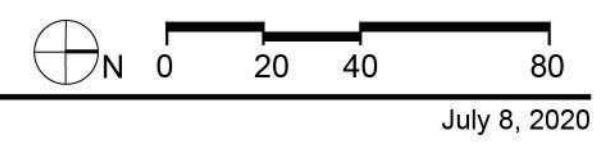
**Site Pros**

- Uses the existing topography to shape the playscape
- Part of a larger park master plan (by others)
- Space for multiple covered picnic shelters for rental opportunities
- Near a future school
- Not confined by space or existing features
- Beautiful views to the east

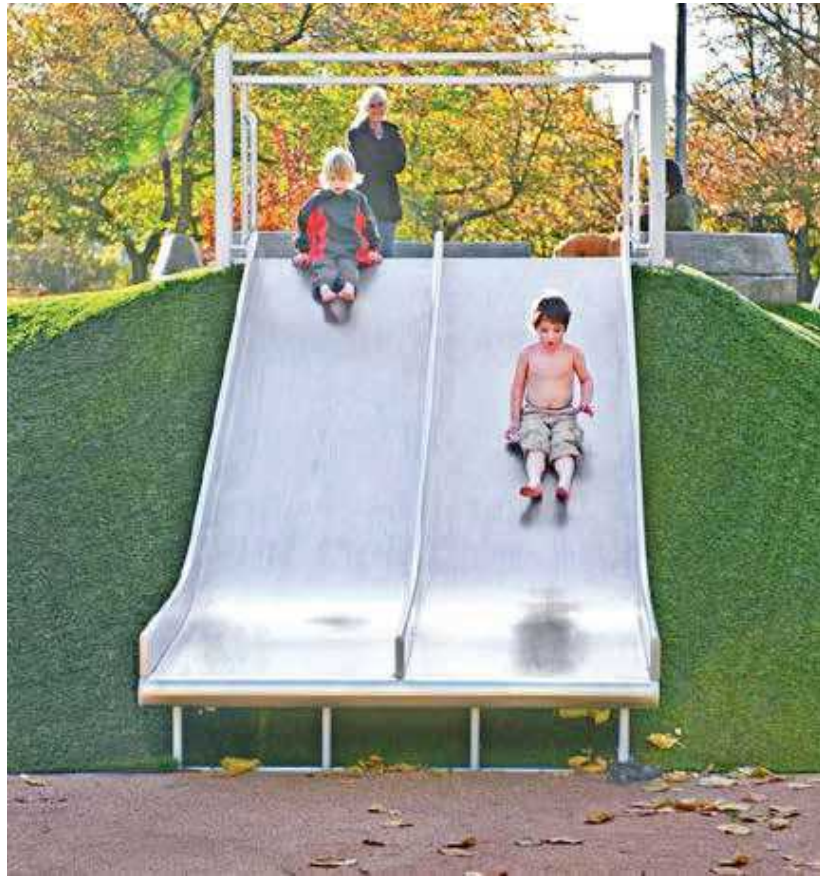


# Potential Development Site C: Community Park

Village of McFarland - Special Needs Park



# Active Play: Climbing, Sliding, Swinging, Rocking



## Concept Images

Village of McFarland - Special Needs Park

July 8, 2020



# Passive Play: Sensory, Water, Discovery, and Imaginative



## Concept Images

Village of McFarland - Special Needs Park

July 8, 2020



## Community Involvement

To gather input from the community the three design options were presented to the public during a Facebook live event on 8/4/2020. After the presentation, community members were able to ask or submit written questions, which were then answered by the design team or the CORE team members. Immediately following the community event the Village of McFarland distributed a survey. The purpose of the survey was for the community to select a site for development of the inclusive playground and to gather input from the community on how they use the current playgrounds and what they would like included in the new inclusive playground.

### Survey Summary:

The survey was available for two weeks and had 189 responses, 25% of those responses were from participants who have a child or care for a child with a disability or medical issue. The preferred playground development site was Cedar Ridge Park by over 50% of the responders, Community Park is preferred by just over 30% of the responders, and Highland Oaks was the least preferred site. The survey showed that the majority of the responders preferred Cedar Ridge Park for its walk-ability/ bike-ability, the over all park size, and its proximity to their place of residence.

The most popular types of play are listed below in order from most popular to least popular:

- 1 - Physical Play
- 2 - Vestibular Play (Sense of balance and spatial orientation)
- 3 - Water Play
- 4 - Imaginative Play
- 5 - Sensory Play
- 6 - Construction Play
- 7 - Nature Play
- 8 - Quiet Reflection

The most popular type of equipment preferred by users are listed below in order from most popular to least popular:

- 1 - Ladders/ bridges/ monkey bars/ climbing wall
- 2 - Slides
- 3 - Swings
- 4 - Balance beams / stepping stones
- 5 - Track Rides / Ziplines
- 6 - Tunnels
- 7 - Rockers/Seesaws
- 8 - Spinners

The top three site features needed on the playground in order to attract users of varying abilities include:

- 1 - Shade
- 2 - Restrooms
- 3 - Seating

See appendix A for the survey and appendix B for the full summary of survey results including written responses and comments.

Learning Landscapes Design presented these results to the Parks Committee on 8/27/20 for final comment and approval of Cedar Ridge Park as the selected development site for the future inclusive playground.

## Concept Design

The Core team developed a list of program elements for the playground. These were selected based on survey result, the Core team's experiences with the targeted user group and park planning, and design discussions with Learning Landscapes Design and leading universal play specialist Mara Kaplan from Let Kid's Play!

Below is a summary of the design decision made:

- A play space for everyone should be our main goal.
- The Core team wants to focus on the types of play that are not provided elsewhere in the McFarland park system. Although, physical play is the most popular type of play by survey responders, it is also the most common type of play offered at the other parks within the community. The physical play items that are incorporated should be inclusive items that focus on movement and should be unique to this park.
- The primary focus of the playscape should be vestibular play, sensory play and imaginative play. The secondary focus of the playscape should be physical play, nature play, and quiet reflection.
- The types of play should be sensory rich in order to engage users with sensory processing disorders. Sensory rich items include elements that engage visual, auditory, tactile, vestibular, and proprioceptive senses. The vestibular system relates to balance and the proprioceptive system relates to the awareness of how your body is positioned within the world. Sensory rich play environments allow children of all abilities to integrate and develop their senses. Children with sensory processing disorders, whether they are hyper or hypo sensitive are able work on and train their senses to a wider range of experiences which better prepares them for the variety every day situations.
- The Core team decided to remove water play from the playscape. Water play should be made the primary focus of another project to allow water play to be a deliberate decision for both the users and the care givers.
- The zip-line was removed from the playscape due to the space required for this piece of equipment and the limited amount of users it can accommodate at one time. The team decided it would be better to focus on slides, swings, spinners, and balancing elements because of their vestibular input benefits.
- Perimeter fences and gated entrances allow children to freely play without the risk that they run into nearby dangers. This is especially true for children on the Autism spectrum who tend to run away from stimulation. Perimeter fences and gates provide caregivers with piece of mind that their child will not suddenly leave or wander away from the play space. The whole play experience including play equipment, pathways, and support features such as picnic tables and restrooms is surrounded by a fence and limited to one entrance with a gate.



- Play elements should provide multiple challenge levels for safe risk taking.
- Materials should be a blend of natural elements and equipment.
- Use of unitary surfacing should be used within the use zones of play components. Unitary surfacing should be pour-in-place rubber or artificial turf.
- Designated accessible parking spaces should be provided within the parking lot to make access to the playscape easier for those arriving by vehicle.
- Based on survey results the team has decided to focus on the following site support features: seating, shade, and a restroom. A variety of seating should be provided through the space and shade should be provided in areas where users may be spending extended periods of time.
- A restroom with an adult changing table makes it easier for care givers and users to visit the playscape knowing their needs are met without having the leave. Large family style restrooms allow groups to enter the restroom together if needed, increasing supervision options.
- Quiet reflection or cozy spaces provide a place where children can go to decompress or relax when they are over stimulated. The survey indicated that one large quiet reflection space was not desired by the community. However, small quiet reflection spaces should be peppered throughout the design. Cozy spaces may be a sitting areas with high walls or a low overhead structure where children feel safe and enclosed while still being visible to others.
- An orientation path should connect all the areas and be completely accessible. Orientation paths allow users and caregivers the opportunity to tour and take in the entire space before choosing to engage. Users are able to create an internal map in their head in case they need to suddenly change their environment.
- The playscape should provide a map of the space both at the playscape entrance and on the McFarland parks and rec website. This will allow both users and caregivers to become familiar with the layout of the space and to help prepare for their visit to the park, minimizing the amount of surprises or unforeseen situations.
- Themes were discussed and the core team decided a theme should be incorporated on a small scale, but not throughout the entire playscape. The Core team suggested an emergency responders theme such as fire truck, ambulance, or police car.



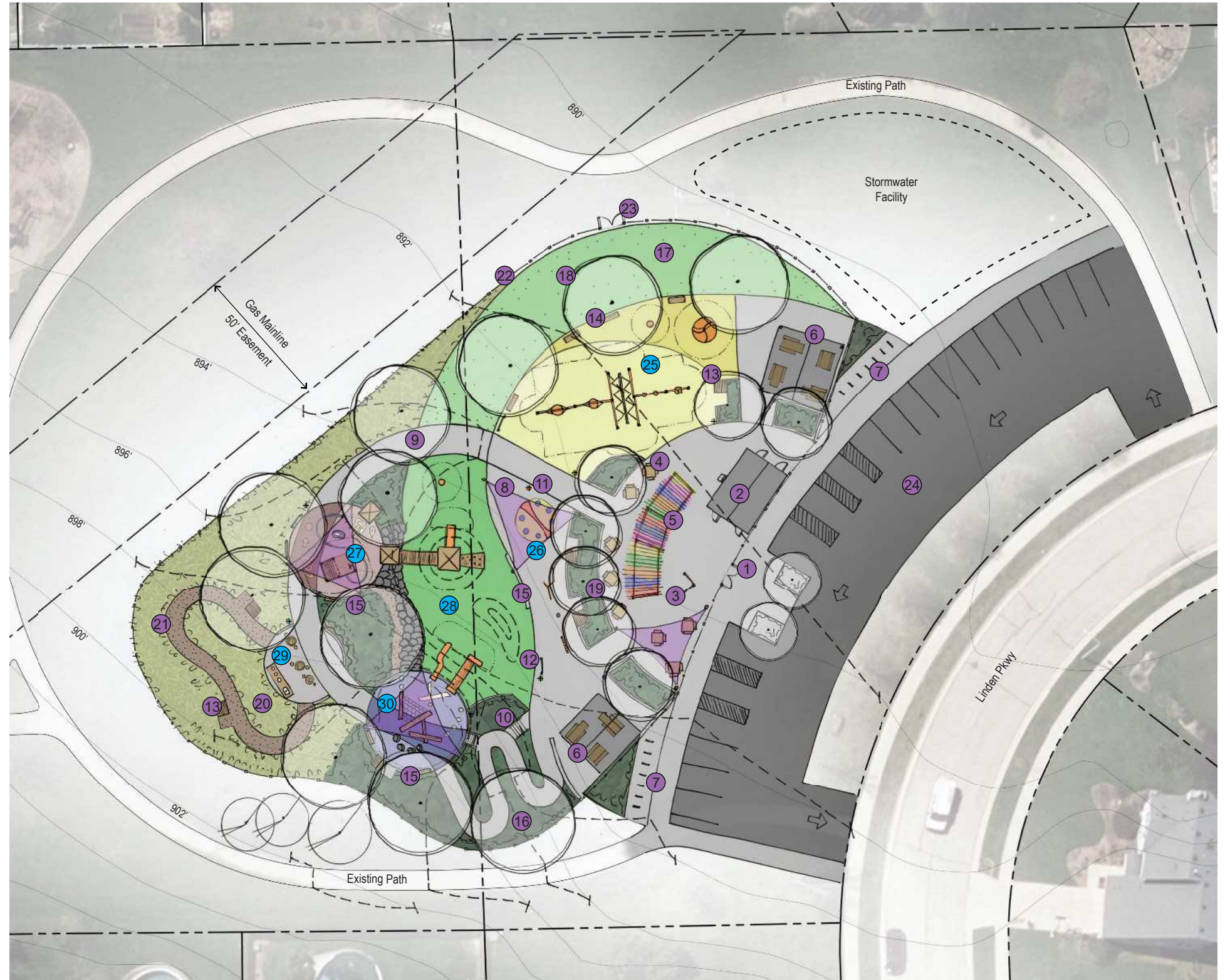
The survey results, the design meetings and the Core team decisions resulted in the following concept plan. Accompanying this plan are concept images and an estimate of probable cost.

## Site Elements

- 1 Entry Gate
- 2 Family Restrooms with Adult Changing Tables
- 3 Map / Park Signage
- 4 Picnic Tables
- 5 Colorful Shadow Overhead Structure
- 6 Picnic Shelter (2)
- 7 Bike Racks
- 8 Shade Sail Structure (4)
- 9 Orientation Path
- 10 Stairs
- 11 Wayfinding Posts (6)
- 12 Communication Boards (3)
- 13 Quiet Nooks (6)
- 14 Benches
- 15 Raised Concrete Seating Wall
- 16 Planting Area, typ.
- 17 Open Lawn
- 18 Large Shade Trees
- 19 Quaking Aspen Grove
- 20 Wild Flower and Tall Grass Meadow
- 21 Crushed Aggregate Pathway
- 22 Perimeter Fence
- 23 Maintenance Access Gate
- 24 Parking Lot (21 Spaces)

## Play Elements

- 25 Vestibular Play Area
  - Wheelchair Accessible Spinner
  - Single Spinner Seat
  - Swing Structure: Accessible Swing Seat, Bucket Swing (2), Pendulum Rope Swing, Nest Swing (2)
  - Pour-In-Place Rubber Surfacing
- 26 Sensory Area
  - Electronic Movement Game
  - Sensory Panels
  - Musical Instruments
- 27 2-5yr old Play Area
  - Playhouses
  - Fire Truck with Steering Wheel and Net Seat
  - Fire Station Bells
  - Fire Dog Statue
  - Pour-In-Place Rubber Surfacing with Patterns
- 28 Hill Play Area
  - Boulder Scramble
  - Cave
  - Embankment Slide
  - Playhouses and Bridge
  - Climbing Wall
  - Play Mounds
  - Artificial Turf Surfacing
- 29 Nature Play Area
  - Nature Kitchen
  - Log Table and Stump Seats
  - Exploration Path
  - Woven Stick Peek Through Panel
- 30 5-12yr old Play Area
  - Embankment Slide
  - Embankment Roller Slide
  - Balancing and Climbing Logs, Boulders, and Net
  - Pour-In-Place Rubber Surfacing with Patterns



# Cedar Ridge Park Inclusive Playground - Draft Concept Plan

Village of McFarland, WI

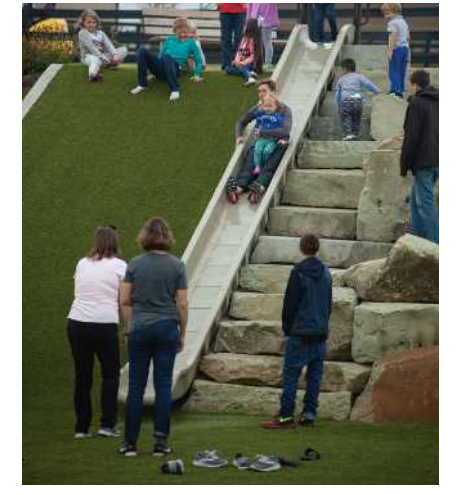
November 12th, 2020



Swinging and Spinning



Hills, Slides, and Forts



Cedar Ridge Park Inclusive Playground - Concept Images

Village of McFarland , WI

November 19th, 2020



Imaginative Play, Sensory Play, and Climbing



# Cedar Ridge Park Inclusive Playground - Concept Images

Village of McFarland, WI

November 19th, 2020





# Cedar Ridge Park Inclusive Playground - Concept Images

Village of McFarland, WI

November 19th, 2020



**McFarland Inclusive Playscape**

Estimate of Costs

11/19/20

ITEM	QTY.	UNIT	UNIT COST	TOTAL COST (Grey = possible savings)	REMARKS	SOURCE
<b>SITE PREPARATION &amp; DEMOLITION</b>				<b>\$36,000</b>		
Mobilization	1	LS	\$30,000	\$30,000		
Demo	1	LS	\$2,000	\$2,000	Contractor to demo a few trees and a small section of path.	
Erosion Control	1	LS	\$4,000.00	\$4,000	Silt fence \$50 lf plus inlet covers	
<b>EARTHWORK AND DRAINAGE</b>				<b>\$41,250</b>		
Top Soil Stripping and Saving	62000	SF	\$0.25	\$15,500	Assumes stripping and saving top 4" of existing soil	
Site Grading	370	CY	\$40.00	\$14,800	Unbalanced (Roughly 10,000sf cut / 10,000sf fill)	
Fine Grading	13000	SF	\$3.25	\$42,250	g, and Planting Areas	
Drain Pipe Under Play Surfacing	300	LF	\$9.00	\$2,700	4" perforated pipe connect to stormwater area	
Stormwater Plumbing	1	AL	\$5,000.00	\$5,000	Drainlines and drainage infrastructure from playarea and parking lot to stormwater facility	
<b>PAVING AND CONCRETE</b>				<b>\$285,944</b>		
Asphalt paving (parking lot)	11300	SF	\$6.00	\$67,800	4" depth asphalt paving	
Concrete Paving - 4" depth	14200	SF	\$10.00	\$142,000	10,400sq within playground fence, 3800sq along parking lot.	
Concrete Stairs w/ Handrails	1	LS	\$10,000.00	\$10,000	Concrete stairs + 4 hand rails, 5 risers each staircase	
Concrete Walls	450	LF	\$125.00	\$56,250	8-10" curb width, top of planter: 18" above finish grade.	
Wood Bench Tops to Seat Wall	5	EA	\$7,500.00		Allowance for custom construction	
Crushed Aggregate Path - 6' Wide	21	tons	\$114.00	\$2,394	Narrow pathway at top of boulder scramble and 6' wide path in Nature Play Area - Includes stone, labor, site prep, and fabric. Stone: 925sf @ 4" depth = 21 tons, Price \$48/ton. Labor = \$1.50/sf	Halquist Stone

**McFarland Inclusive Playscape**

Estimate of Costs

11/19/20

<b>SITE IMPROVEMENTS - GENERAL</b>		<b>\$414,750</b>			
Restroom	1	LS	\$150,000.00	\$150,000	Includes restroom building, (2) adult changing tables, drinking fountain, utilities connections (water, sewer, storm), installation, and freight HuffCutt & Max-Ability
Picnic Shelter (2)	1	LS	\$70,000.00	\$70,000	20x20 Gable Structure \$14,775, 24x24 Gable Structure \$19,300. Includes engineering, installation, and freight Coverworx
Colorful Entrance Structure	1	LS	\$40,000.00	\$40,000	Wood pergola, 45' length through center of structure x 10' width. Colorful Plexiglass roof sold separately and installed by contractor. Coverworx
Shadesails	4	EA	\$15,000.00	\$60,000	30x30x30 Triangular Shade Sail with (3) metal posts. Includes engineering, installation, and freight.
Perimeter Fence	750	LF	\$42.00	\$31,500	4' ht. Black Aluminum Fence with (2) double hinge gates
Bike Racks	17	EA	\$250.00	\$4,250	Allowance for purchase item. Black powder coated "U" Rack, surface mounted with grout cover. Includes product, installation, and shipping
Picnic Tables	16	EA	\$1,000.00	\$16,000	An allowance for purchased item. (8) ADA accessible square picnic tables and (8) ADA accessible rectangular picnic tables. Includes freight.
Benches	6	EA	\$1,500.00	\$9,000	Allowance for purchased item. Includes freight.
Quiet Nooks	6	EA	\$1,500.00	\$9,000	Allowance for custom construction. Seating platforms designed to create a sense of enclosure.
Wayfinding Posts	6	EA	\$1,500.00	\$9,000	Allowance for custom 10' ht. 6x6 posts with colored sign or painted icon for wayfinding. Embedded in concrete footing.
Communication Boards	3	EA	\$2,000.00		Allowance for purchased item
Entrance Sign / Map and Kiosk	1	LS	\$10,000.00	\$10,000	Allowance for purchased item
<b>PLAYGROUND SURFACING</b>		<b>\$147,900</b>			
Pour-in-place rubber surfacing	5630	SF	\$15.00	\$84,450	100% Color Pour-In-Place Rubber. Includes sub-base, rubber, and installation. Does not include Excavation. Cost savings opportunity: 50% color / 50% black rubber blend. Two to five area 900 Sf, Vestibular area 3700sf, five to twelve 1030sf
Flush Concrete Curb at PIP Edge - 6" wide	230	LF	\$15.00	\$3,450	
Artificial Turf Surfacing	3000	SF	\$20.00	\$60,000	Includes sub-base, turf, and install. Does not include excavation

**McFarland Inclusive Playscape**

Estimate of Costs

11/19/20

<b>VESTIBULAR PLAY AREA</b>		<b>\$71,650</b>				
Wheelchair Accessible Spinner	1	LS	\$13,900.00	\$13,900	The Inclusive Whirl, Price includes product, installation, and Freight	PlayWorld
Single Spinner Seat	1	LS	\$3,750.00	\$3,750	Cozy Cocoon, price includes product , installation, and Fright	PlayWorld
Swing Structure	1	LS	\$54,000.00	\$54,000	Includes (1) rope swing, (2) bucket swings, (1) Accessible swing seat, (2) nest swings	Columbia Cascade
<b>SENSORY AREA</b>		<b>\$78,100</b>				
Electronic Movement Game	1	LS	\$55,000.00	\$55,000	Sona, includes product, 10 subscription, pavement painting, installation, and freight	Yalp
Sensory Panels	1	LS	\$15,250.00	\$15,250	Museum Grand Gallery Sensory Panels, price includes product, installation, and freight	Miracle Recreation
Musical Instruments	1	LS	\$2,500.00	\$2,500	Small Cabasa and Large Cabasa, price includes product, installation and freight	PlayWorld
Musical Instruments	1	LS	\$5,350.00	\$5,350	Concerto Chimes, price includes product, installation, and freight	PlayWorld
<b>2-5 YR OLD AREA</b>		<b>\$40,000</b>				
Musical Instrument - Fire Station Bell	1	LS	\$2,500.00	\$2,500	An Allowance for custom construction	
Playhouses	2	EA	\$5,000.00	\$10,000	An Allowance for custom construction. Playhouse to have 4 sides and roof.	
Wood Fire Truck	1	LS	\$12,000.00	\$12,000	An Allowance for custom construction. Truck includes steering wheel, crawl through opening, partial overhead structure, wide opening and wheel chair turnaround space, window openings, cargo net seat.	
Interpretive Play Signage	1	LS	\$500.00	\$500	Allowance for purchased item	
Fire Station Themed Statue (Dalmation or Fire Hydrant)	1	LS	\$5,000.00	\$5,000	Allowance for purchased item	
Small Custom Climber	1	LS	\$10,000.00	\$10,000	Allowance for custom construction	
<b>HILL PLAY AREA</b>		<b>\$42,000</b>				
Wood Hilltop Structure / Bridge / Climbing Wall	1	LS	\$30,000.00	\$30,000	Allowance for custom construction	
3' ht, Wide Plastic Embankment Slide	1	LS	\$5,000.00	\$5,000	Includes slide, sit down platform, and installation. Hill slide installation does not include preparation/grading of hill.	Playworld
Single Spinner Seat	1	LS	\$2,000.00	\$2,000	Spin Cup, price includes product, installation, and freight	Playworld
Boulder Scramble	1	LS	\$5,000.00	\$5,000		

**McFarland Inclusive Playscape**

Estimate of Costs

11/19/20

<b>NATURE PLAY AREA</b>				<b>\$6,800</b>	
(1 ) Log Table and (2) Stump Seats	3	EA	<del>\$5,000.00</del>		An Allowance for custom construction
Nature Kitchen	1	LS	\$3,000.00	\$3,000	An Allowance for custom construction
Woven Stick Peek Through Panel	1	LS	\$2,000.00	\$2,000	An Allowance for artistic installation
Habitat Houses	2	EA	\$150.00	\$300	An Allowance for habitat houses. Includes installation and freight.
<b>5-12 YR OLD AREA</b>				<b>\$26,550</b>	
Double Crisscross Logs - 12-8" dia	1	LS	\$3,000.00	\$3,000	An Allowance for custom construction
Single Elevated Balancing Lot	1	LS	\$1,000.00	\$1,000	An Allowance for custom construction
Climbing Net	1	LS	\$2,000.00	\$2,000	An Allowance for custom construction
Stepping Stones	4	EA	\$500.00	\$2,000	Boulders set into the safety surfacing
6' Plastic Embankment Slide with Transfer Seat at Bottom	1	EA	\$7,550.00	\$7,550	Includes slide, sit down platform, and installation. Hill slide installation does not include preparation/grading of hill.
					PlayWorld
6' Roller Embankment Slide with Transfer Seat at Bottom	1	EA	\$11,000.00	\$11,000	Includes slide, sit down platform, and installation. Hill slide installation does not include preparation/grading of hill.
					PlayWorld
<b>PLANTING &amp; IRRIGATION</b>				<b>\$48,500</b>	
Planting Beds	4200	SF	\$3.50	\$14,700	Assumes no irrigation. Includes soil, plants, top dressing, and installation.
Open Lawn - Sod	3700	SF	\$1.50	\$5,550	Assumes no irrigation. Includes sod, soil, and installation.
Seeded Area - Wild Flowers and Tall Grass	5000	SF	\$0.25	\$1,250	Assumes no irrigation. Includes seed, soil, and installation.
Shade Trees	20	EA	<del>\$8,000.00</del>		Assumes no irrigation.
Stormwater Facility	6000	SF	\$3.50	\$21,000	Assumes no irrigation. Includes soil, plants, top dressing, and installation
<b>Estimated Construction Cost</b>				<b>\$1,239,444.00</b>	
<b>Contractor Overhed and Bonding</b>		10%		\$123,944	
<b>Permit</b>		1%		\$12,394	
<b>Contengency</b>		15%		\$185,917	
<b>Estimated Construction Cost</b>				<b>\$1,561,699.44</b>	

# Appendix A

## Village of McFarland – Special Needs Playground Survey

The Village of McFarland is planning for a new inclusive playground with the help of Learning Landscapes Design. The objective of this inclusive playground will be to include everyone in the McFarland community. With your input, we will create a thoughtfully designed play environment where children of all abilities can play together and be challenged at their own developmental level. Our goal for this playground is to take away the barriers, both physical and social, and provide a fun experience for all.

Through a site analysis process, we have chosen three potential development sites and we would like the community to weigh in on your preferred location. We have put together a graphic, which can be found at: <https://bit.ly/33q2oZh>, that shows a preliminary design approach at each potential location.

Please take a few minutes to review the design approach options and answer the following questions. This survey will help us understand which location is preferred, how playgrounds are used, and what you would like to see included in the design.

Thank you!

1. Out of the three location in mind, please rank each of the following playground sites in order of importance with (1) being the most desired location and (3) being the least desired location.

\_\_\_\_\_ Highlands Oak Park (5945 Osborn Dr)

\_\_\_\_\_ Cedar Ridge Park (5303 Wild Cherry Ln)

\_\_\_\_\_ Community Park (3234 County Hwy AB)

2. Referring to question number one, why is the selected park above your MOST desirable location for an inclusive playground? (Select all that apply)

\_\_\_\_\_ Near your place of residence

\_\_\_\_\_ Distance from town center

\_\_\_\_\_ Walkable / Bikeable

\_\_\_\_\_ Easy to get to by car

\_\_\_\_\_ Park Size

\_\_\_\_\_ Other:

3. Referring to question number one, why is the selected park above your LEAST desirable location for an inclusive playground? (Select all that apply)

\_\_\_\_\_ Too far from your place of residence

\_\_\_\_\_ Distance from town center

\_\_\_\_\_ Not walkable / bikeable

\_\_\_\_\_ Difficult to get to by car

\_\_\_\_\_ Park Size

\_\_\_\_\_ Other:

## Section II: Types of Play

The following questions are for parents and caregivers to rank the type of play, or activity, that your child[ren] enjoy most. Please answer the questions based on the number of children with your household.

4. Child One: Rank the type of play your child enjoys the most. (1) being the most enjoyable and (8) being least enjoyable.

- Physical Play (jumping, climbing, running, etc.)
- Imaginative Play (pretend house or castle)
- Sensory Play (music, art, colors, tactile panels)
- Vestibular Play (spinning, swinging, etc.)
- Water Play (water works station)
- Construction Play (building forts or stacking blocks)
- Quiet Reflection (sitting, observation)
- Nature Play (exploration, flower picking, bug hunts, etc.)

5. Child Two: Rank the type of play your child enjoys the most? (1) being the most enjoyable and (8) being least enjoyable

- Physical Play (jumping, climbing, running, etc.)
- Imaginative Play (pretend house or castle)
- Sensory Play (music, art, colors, tactile panels)
- Vestibular Play (spinning, swinging, etc.)
- Water Play (water works station)
- Construction Play (building forts or stacking blocks)
- Quiet Reflection (sitting, observation)
- Nature Play (exploration, flower picking, bug hunts, etc.)

6. Child Three: Rank the type of play your child enjoys the most? (1) being the most enjoyable and (8) being least enjoyable

- Physical Play (jumping, climbing, running, etc.)
- Imaginative Play (pretend house or castle)
- Sensory Play (music, art, colors, tactile panels)
- Vestibular Play (spinning, swinging, etc.)
- Water Play (water works station)
- Construction Play (building forts or stacking blocks)
- Quiet Reflection (sitting, observation)
- Nature Play (exploration, flower picking, bug hunts, etc.)

7. Child Four: Rank the type of play your child enjoys the most? (1) being the most enjoyable and (8) being least enjoyable

- Physical Play (jumping, climbing, running, etc.)
- Imaginative Play (pretend house or castle)
- Sensory Play (music, art, colors, tactile panels)
- Vestibular Play (spinning, swinging, etc.)
- Water Play (water works station)
- Construction Play (building forts or stacking blocks)
- Quiet Reflection (sitting, observation)
- Nature Play (exploration, flower picking, bug hunts, etc.)

## Village of McFarland – Special Needs Playground Survey, continued

8. Please rank the type of physical equipment children in your household prefer? (1) being the most popular and (8) being the least popular.

- Slides
- Ladders/bridges/monkey/climbing walls
- Balance beams/ stepping stones
- Tunnels
- Rockers/Seesaws
- Swings
- Spinners
- Track Rides/Zip Lines

9. Please select the top (3) site features needed on the playground.

- Seating
- Restrooms
- Perimeter Containment Fence
- Unitary Surfacing (i.e. rubber playground surfacing)
- Shade
- Signage (Wayfinding, Map, Orientation)
- Picnic Tables
- Parking
- Drinking Water
- Other:

10. Does your child, or a child you care for, have a disability or medical issue?

- Yes
- No

11. If you answered “yes” to the questions above, please explain how it impacts their playground experience.

12. What can we add to the playground to ensure that your family has what they need to come and play?

13. Any additional comments? Please share.

# Appendix B

## Survey Results

### ABOUT

Survey Open ... August 5 – August 19

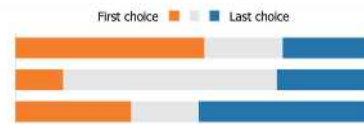
Total Responses ... 189

Average Time to Complete ... 24:10

### Q1: 161 Responses

Out of the three locations in mind, please rank each of the following playground sites in order of importance with (1) being the most desired location to (3) being the least desired location.

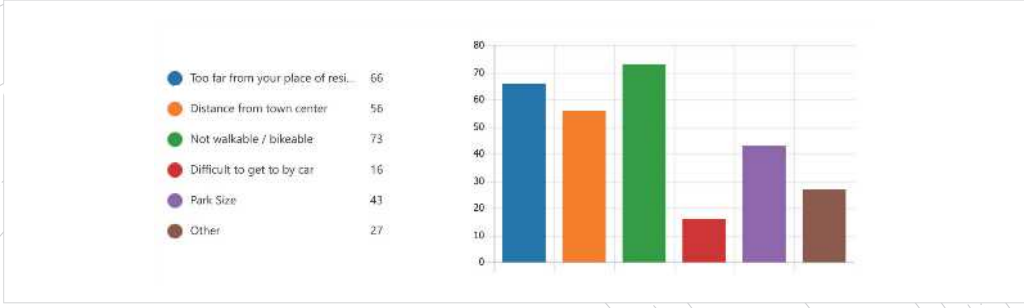
Rank	Options
1	Cedar Ridge Park (5303 Wild ...
2	Highlands Oak Park (5945 Osb...
3	Community Park (3234 Count...



- Cedar Ridge Park**
  - 53.4% First Choice
  - 21.7% Second Choice
  - 24.8% Third Choice
- Highland Oak Park**
  - 13.7% First Choice
  - 59.6% Second Choice
  - 26.7% Third Choice
- Community Park**
  - 32.9% First Choice
  - 18.6% Second Choice
  - 48.4% Third Choice

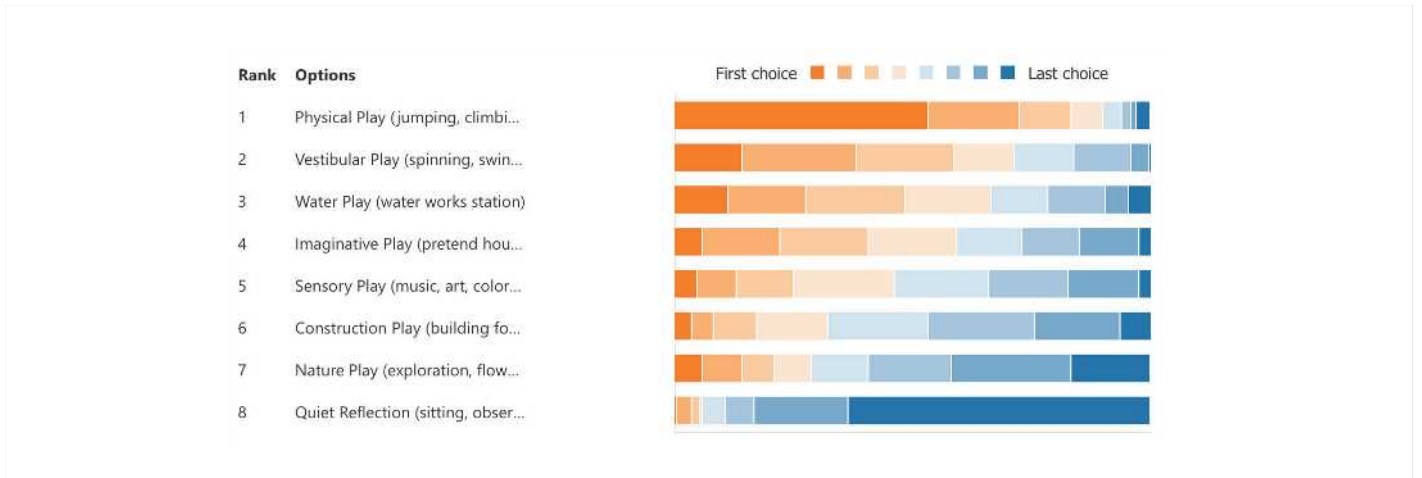


**Q2: 187 Responses**  
 Referring to question number one, why is the selected park above your MOST desirable location for an inclusive playground?



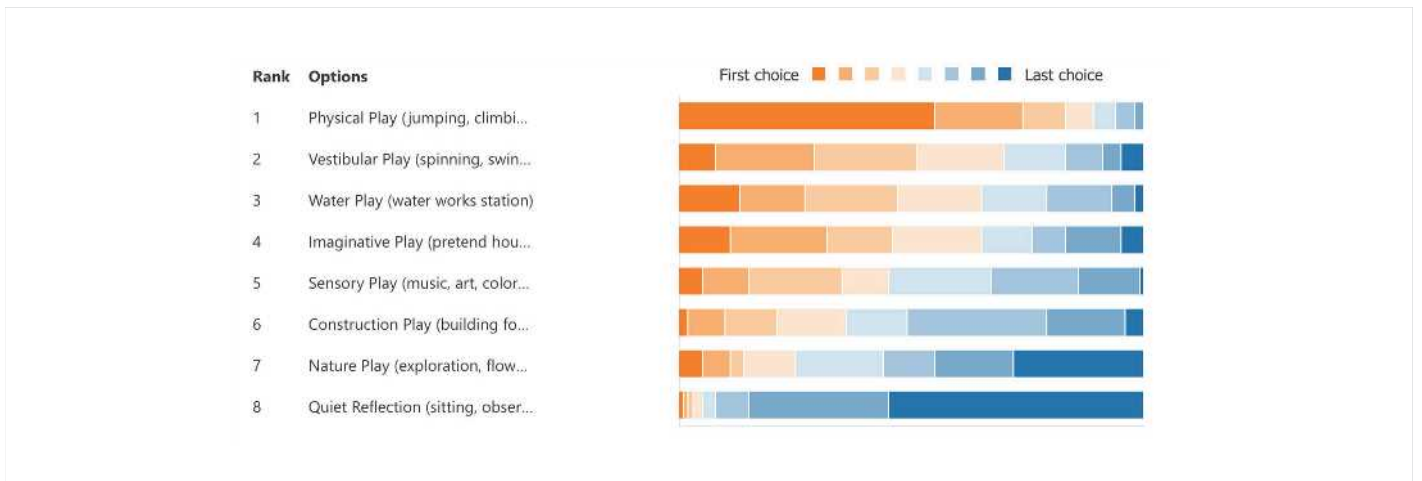
**Q3: 170 Responses**  
 Referring to question number one, why is the selected park above your LEAST desirable location for an inclusive playground?

## Appendix B - Survey Results



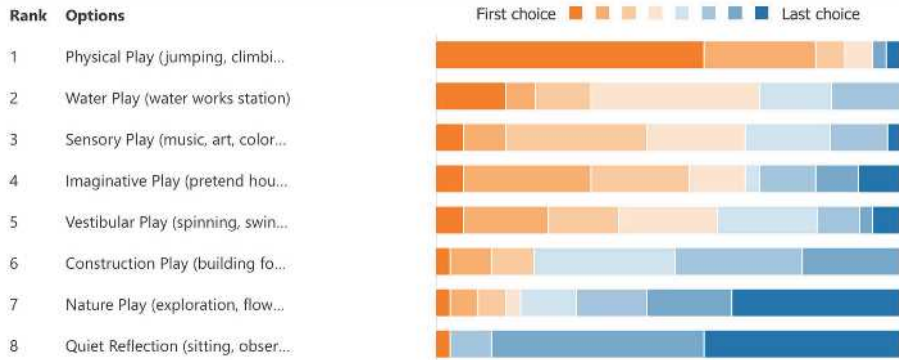
### Q4: 167 Responses

Child One: Please rank the type of play your child enjoys the most. (1) being the most enjoyable and (8) being least enjoyable.



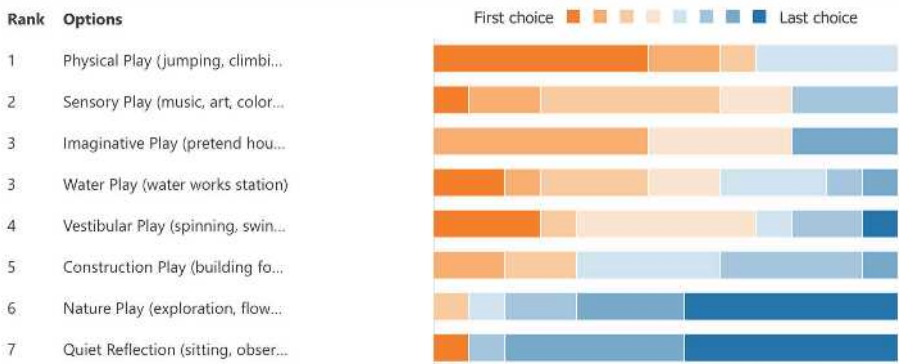
### Q5: 100 Responses

Child Two: Please rank the type of play your child enjoys the most. (1) being the most enjoyable and (8) being least enjoyable.



### Q6: 33 Responses

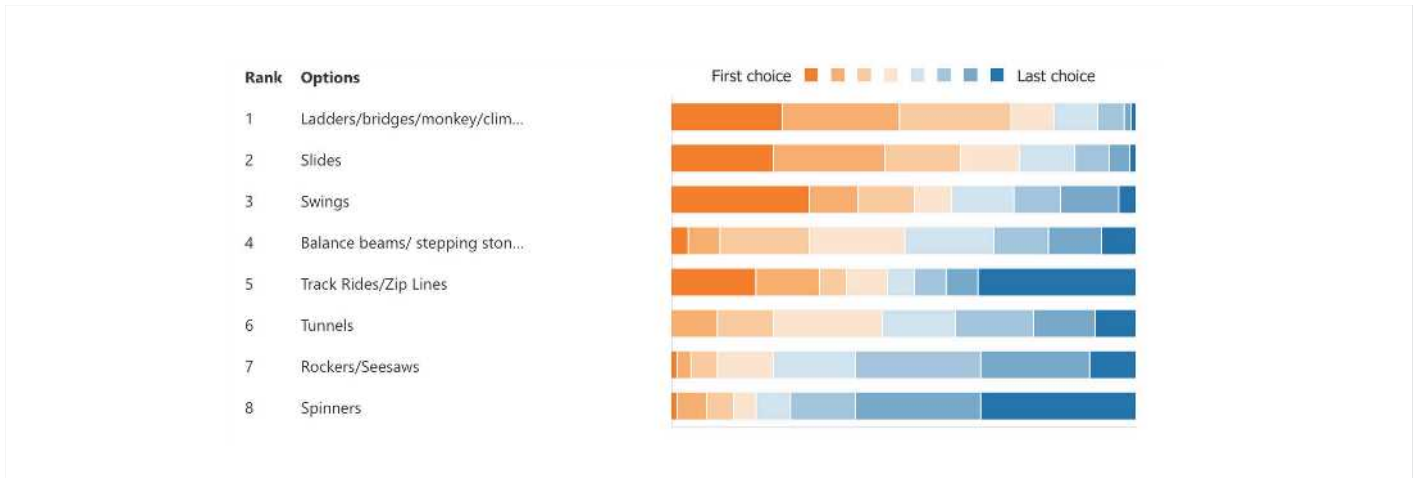
Child Three: Please rank the type of play your child enjoys the most. (1) being the most enjoyable and (8) being least enjoyable.



### Q7: 13 Responses

Child Four: Please rank the type of play your child enjoys the most. (1) being the most enjoyable and (8) being least enjoyable.

## Appendix B - Survey Results

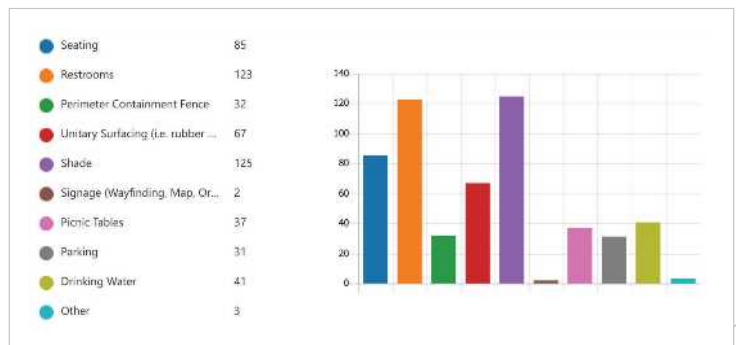


**Q8: 159 Responses**  
 Please rank the type of physical equipment children in your household prefer?  
 (1) being the most preferred and (8) being the least preferred.

## Q9: 179 Responses

Please select your top 3 site features needed on the playground.

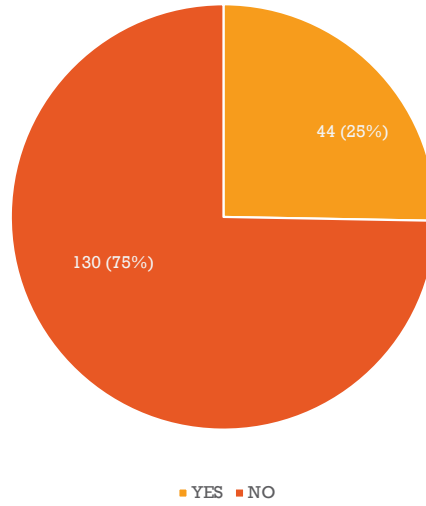
### SHADE RESTROOMS SEATING



**Q10: 174 Responses**

Does your child, or a child you care for, have a disability or medical issue?

**RESULTS**





She just needs an area to take a break and catch her breath. She has asthma.

Need to be able to supervise easily, tends to run off, needs support to use equipment

Our daughter uses a wheelchair. She is unable to use her arms and legs for play. She also can't sit up or hold her head up on her own. She relies on a caregiver to help her play and push her in her chair.

She is in a wheelchair

Uneven ground makes it trickier to navigate

Needs to observe hearing and physical impairment

Needs assistance to get into swings, etc.

Autistic

It is helpful to us to have a restroom close by that is accessible to the child and the caregiver to assist as needed.

Inclusion is huge. Being able to participate to any degree with peers is long overdue, appreciated, and welcomed!

Mental and physical disabilities make sensory very important.

Developmental delays,

Doesn't enjoy traditional playgrounds because they are too physically demanding.

Most playgrounds have limited access.

Less emphasis on physical play, more sensory activities

Cerebral palsy—need wheelchair accessible activities and supportive equipment for reduced tone

My son has fluid on the brain and macrocephaly which causes him to fall more frequently during physical activity. Because of this, I prefer playgrounds with rubber and avoid mulch which is less stable.

Lacks balance and size compared to peers.

Blindness

Some things are too tricky

Autism: he runs away

sun allergies chemical sensitivities

Food allergies- would love for there to be signage, and sensory processing- have vestibular play is welcome

Equipment needs to be accessible for those with motor planning issues

Sensory sensitivities and motor functioning

Sensory & vestibular play is very important.

Crowds are difficult.

Sensory input is important. Perimeter fence ensures safety

Neurological disorder

My son has never been a huge fan of playgrounds because he lacks the core muscle strength and balancing skills that are required to use most of the equipment on a regular playground. He always gravitates towards the swings or sandbox, because they are easier for him.

Uneven surfaces prevent our child's access to playground/parks. Parking is critical as long distances to walk creates a barrier. Swings styled for individuals with disabilities must be hung at a height that allows a single person to be able to help our family member get onto the swing seat (swings that are too high are impossible to lift our individual into to sit. Paths thru a variety of accessible play features should have solid footing, handrails for slopes & be wide enough to allow 2 individuals in wheelchairs to easily pass each other... Steps are a barrier, so accessible ramps are needed. Would enjoy a variety of equipment that gives different types of sensory input- proprioceptive, vestibular. A wheelchair swing would be nice for anyone arriving in a w/c.



My nephew lives nearby and is wheelchair bound. Unitary surface and accessible equipment are essential.

a bathroom and no pets allowed

Wheelchair access, lots of space and restrooms

Splash pad

Several different options, which I believe are already in consideration.

A fence, safe padding and accessories

Wheelchair accessibility

Options for multiple age levels.

Equipment for a wide age range

Fencing would be very helpful

Options for wheelchair users to play without having to be transferred out...swings, marry-go-round, or any options for movement while still in the wheelchair.

a beer garden

safety and walk/bike accessible

The swings where an adult and child can ride on the same swing together

Just signage to tell folks that ALL kids can play on the playground.

Scenery stuff, fence, changing table for bigger kids

A swing that the wheelchair can go on

Flooring that is even and easy to roll wheelchairs and strollers on. Fewer steps and more inclines.

Wheelchair accessible to moving parts

monkey bars and climbing equipment

Parking and bathrooms

Ramp to swing

Additional picnic/seating/maybe covered area

Sensory toys, spaces where he can play around others but still have space

Restroom

Restrooms, safety measures such as a perimeter fence, parking, different levels of equipment for all to enjoy

I don't have a child with disabilities but have cared for children with disabilities. I love that McFarland is doing this!

Adequate parking, security features to decrease chances of vandalism, 'buddy benches'...

A sensory area as well as shade

Bike rack(s); Multiple sunshade sails in different locations with picnic tables

Spaces for all kiddos with and without disabilities and all ages so families can play together

Bathrooms, picnic tables, shaded areas.

Shade

Things for All ages of children. Not just big kids

Safe access for children with physical differences.

Restrooms and picnic tables

A community swimming pool

Wheelchair accessible paths, equipment for wheelchairs without requiring we transfer child. Benches to rest and accommodate needs with changing table that could fit a 7-year-old

Soft rubber surfacing definitely helps and shade so that families can come during the quieter times of day without being burnt.

Most anything would be great. A full-on splash pad is more enjoyable if close

---

Green space for running, playing catch.

A spacious bathroom for changing diapers/clothes and an even rubber surface for running.

Brail. Equipment that makes noise. Musical or other

A variety of playground equipment for a wide range of ages.

Bathrooms for sure for younger children

Easy to get on

Perimeter fence with limited entrances/exits

Happy Hour

parking restroom/water

Food allergy signage, lots of kinds of interactive play

Benches surrounding the park for sensory break and shaded areas for break from the hot sun

Crowds are difficult. Pictures on Facebook would help to comfort ahead of time.

Fence, water play, vestibular and physical sensory input

Shade is a big thing otherwise we are limited to early or late in the day due to having multiple melanomas removed

Water play keeps him engaged and relaxed for hours

My son has medical needs that would require a bathroom for most visits. Picnic tables in the shade would also be helpful to manage medical needs.

Accessible swing or gentle gliding play equipment. Parents with different abilities need benches or picnic tables. Color coded sections to depict different areas usage: Adequate space to maneuver around equipment. A basketball hoop at the level for a wheelchair user. Avoid placement of horizontal rails that limit visual fields of wheelchair users. Keep visual lines open for caregivers to observe across play area. Tactile signage and communication board with descriptive language for nonverbal users to express themselves. Colors can signify different usage areas or quiet zones/ active.

---



Necessary addition to our community. We need to give the residents opportunities in our community to access. Our world is changing with residents staying at home for work. These considerations need to be addressed.

Thank you for asking us!

Subcommittee for disabilities

Maintenance costs need to be very low. There are many options that don't require active regular upkeep and repair. This is a priority to me. The building toys seem like they would disappear quickly. Site C suggests a larger park master plan and new school. Without that info, site C makes no sense

Thank you for doing this project! It sounds Amazing!

We are very excited for an inclusive playground!

I appreciate the community survey! This is a great way to get input! I hope that we can move forward with a water option in town soon. All of our surrounding communities have them and it would be nice to stay in town for water play.

The presentation was wonderful, but we need to keep spending under control for this project, especially to look towards a family-oriented water facility (which obviously can be made accessible as well) in the near future.

Great idea

Thank you

We don't have younger children, but I feel this is an important need for the village and especially for those who are at a disadvantage for using traditional park equipment.

We will be grandparents and feel this is a need

Thank you!

We would like a community swimming pool

Thank you for doing this!

Thank you for all your hard work in making this a reality.

Thank you for considering Cedar Glade. It is a large park with very little equipment. Even if this much needed park goes to another location, please consider minor upgrades and improvements to Cedar Ridge park.

abilities and needs change with age

Thanks for working so hard to get community input

Shade will be important as well

Thank you taking the time so ensure all are included!

I think the park is a great idea and a much-needed resource for many families.

Having a park located with room to expand and adequate parking is essential. However, I'm concerned that putting park on Siggelkow across the interstate is an isolated placement that doesn't capture the Village feel and might be so removed it's at risk for vandalization. Wasn't there room near the ballfields on MN? Please remember to include equipment that adults with disabilities can use as small children have access to equipment at elementary schools, while larger individuals have few opportunities. Also including features for all abilities will make for a more inclusive experience, rather than segregating those with disabilities.



**McFarland**  
**SUMMARY SHEET**

**MEETING DATE:** Thursday, January 28, 2021

**SECTION:** Business

**DEPARTMENT:** Administration

**CONTACT:** Matt Schuenke, Village Administrator

**AGENDA ITEM:** Discussion regarding master planning projects at the Community Park and McFarland Park.

**PREVIOUS ACTION:**

March 23, 2020 - Village Board approved the proposal for Master Planning services

June 18, 2020 - Update provided by Consultant to Committee

August 27, 2020 - Update provided by Consultant and scheduled Public Information Meeting by Committee

September 17, 2020 - Public Information Meeting

September 18th - October 9th, 2020 - Public Survey Period

**ISSUE SUMMARY:**

In 2020, we began a process to plan out the future development and use of William McFarland Park and the proposed new Community Park. The rationale for doing so was simple, but for different reasons at each location. William McFarland Park is an existing park with built out uses all of which looking to grow at some point in the undefined future. The Community Park was newly acquired land we wanted to be an outlet for our park system to have a new place to grow into. In both cases, this master planning effort would be used to evaluate the sites, gather feedback, and provide guidance on their future. Our initial work on this project was delayed initially as a result of the pandemic, but has completed some of the intended work planned in the initial proposals. As part of our meeting, the Consultant will be present to reintroduce the Committee to the project and go over some of the work completed to date. One significant aspect of this work that has not been discussed as of yet has been the public input gathered through the surveys, stakeholder interviews, and public information meeting. He will present this information and lead the discussion on how we can proceed to complete this work.

**FINANCIAL/BUDGET IMPACT:**

None.

**VILLAGE PLAN REFERENCE:**

2019-2023 Outdoor Recreation and Open Space Plan



**ORDINANCE REFERENCE:**

None.

**BOARD, COMMISSION OR COMMITTEE RECOMMENDATION:**

Presented for discussion.

**ATTACHMENTS:**

1. 21\_0128 Park COM
2. McFarland Park MP Stakeholder Summary
3. McFarland Park Survey Results
4. Community Park Results



# Park Master Plan Discussion

**Parkitecture + Planning**  
Blake Theisen, PLA, ASLA



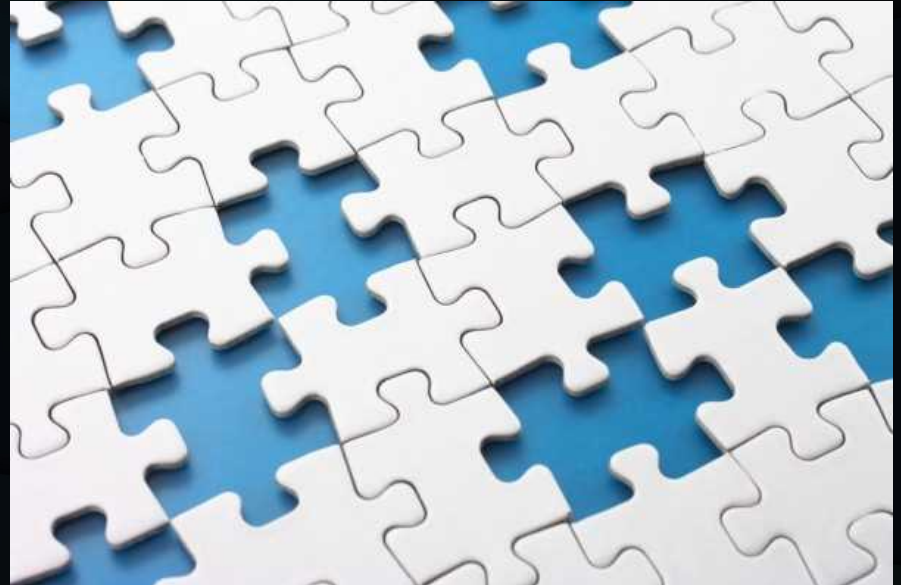
# Agenda

---

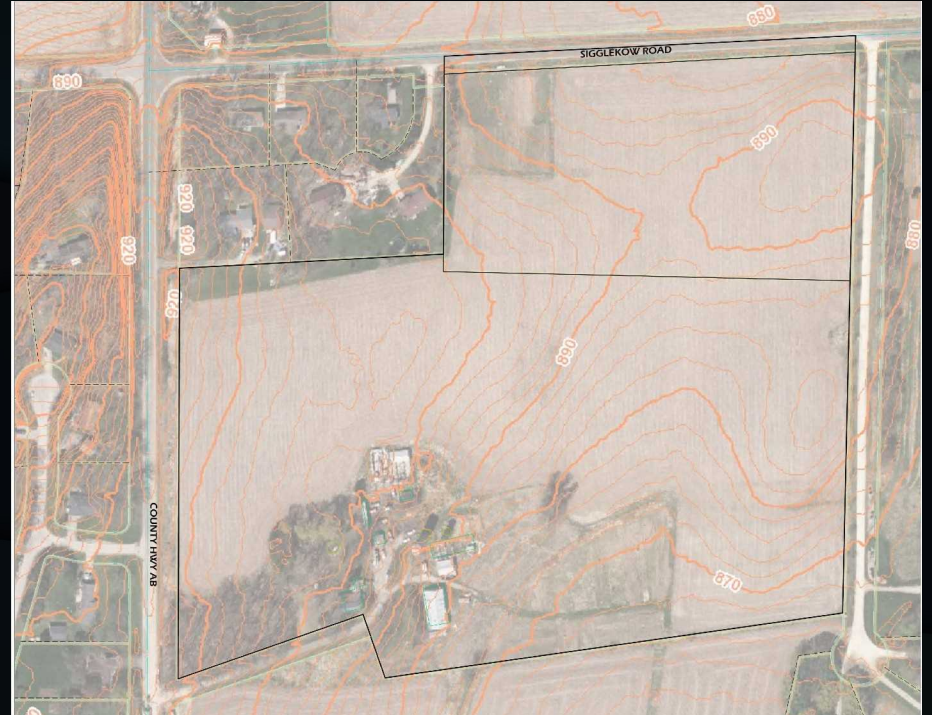
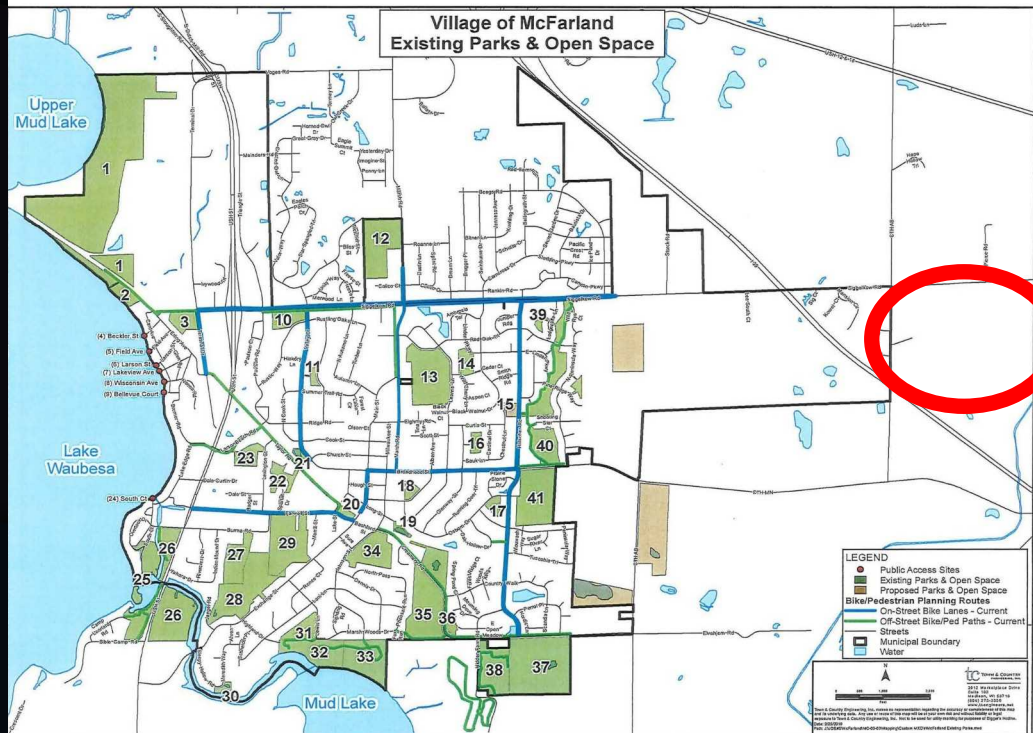
- **Review of Master Plan Process**
- **Review of Existing Sites**
- **Review of Outreach Findings**
- **Consideration of Trends**
- **Discussion of Next Steps**

# Process

- **Site Analysis**
- **Stakeholder Input**
- **Conceptual Diagrams**
- **Feedback Loop**
- **Opinion of Probable Costs**
- **Concept Refinement**
- **Phasing Options**
- **Implementation Strategy**



# Existing Site – New Community Park



# Existing Site – New Community Park

- **Good vehicular access from major roadways**
- **Large land use area offers scalable options**
- **Existing trees and farmhouse/barns**
- **Good visibility from Interstate**
- **Gentle rolling topography**
- **No current sewer or water**

# Existing Site – New Community Park

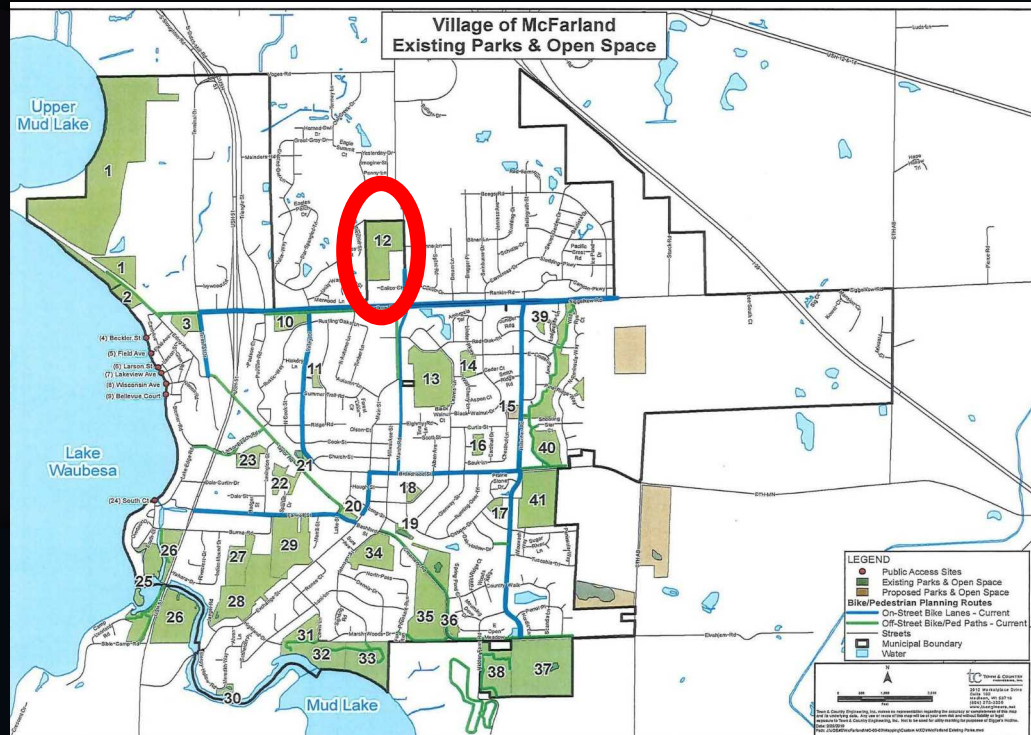
## Open Space Master Plan Goals

- Agility Course
- Amphitheater
- Archery area
- Baseball/softball diamonds
- Basketball Courts
- Batting cages
- Bike Trails
- Bocce Courts
- Canoe/Kayak/Paddle Board Rack
- Climbing Tower
- Concession Stand (s)
- Council Rings
- Cross Country Running
- Cross Country Skiing
- Disc Golf
- Dog exercise area
- Exercise Areas
- Field Hockey
- Horseshoe Pits
- Ice Skating
- La Crosse Field
- Meditation Area
- Municipal Campground
- Natural Areas
- Natural Areas with Water Features
- Observation Platforms
- Off road biking areas
- Outdoor Art
- Parking Lot
- Pickle Ball Courts
- Play Structures
- Rest Rooms
- Sand Play Areas
- Sand Play Areas
- Shelter(s)
- Skate Park
- Snowshoeing
- Soccer Field
- Tennis Courts
- Various Seating Amenities
- Volley Ball Courts
- Walking Trails

# Existing Site – New Community Park



# Existing Site – W. McFarland Park



# Existing Site – W. McFarland Park

- “Special Use” Park
- Awkward Parking
- Conflicting Uses and Demand for Facilities
- No Family Recreation Facilities
- Desire for Expansion by ALL User Groups
- Lack of Connectivity

# Public Input

## Stakeholder Interview Results

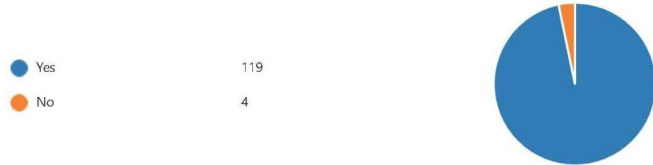
- **Curling Club**
- **Ice Arena/Hockey**
- **Soccer Club**
- **Bocce Association**
- **School District Recreation**
- **Liza Lightfoot**



# Public Input – New Community Park

## Survey Results

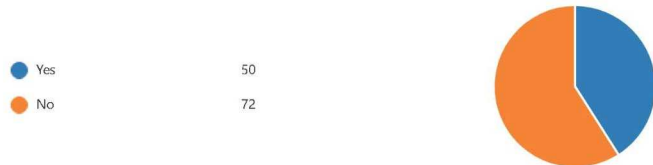
1. Are you a resident of McFarland?



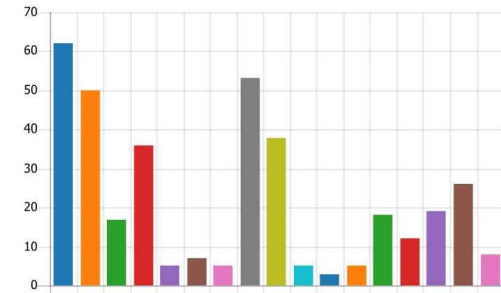
2. What seasons do you use the park? (Check all that apply)



3. Are you aware of the location for the future Community Park?



5. When you visit a park, what are the top three things you look for? (Check 3)

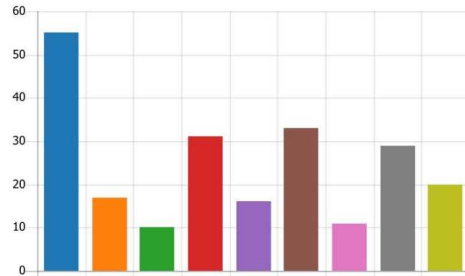


# Public Input – W. McFarland Park

## Survey Results

3. If you answered yes to question 2, please select the facilities you utilize: (Check all that apply)

Soccer Fields	55
Baseball Field	17
Bocce	10
Ice Arena	31
Curling Club	16
Skate Park	33
Shelter Rental	11
Playground	29
Other	20



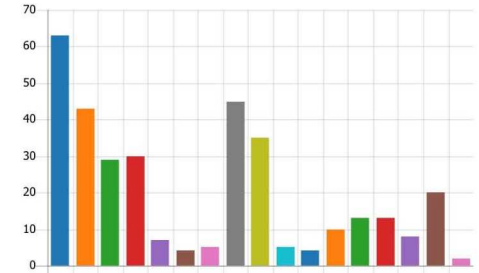
4. What Seasons do you use the park? (Check all that apply)

Spring	77
Summer	72
Fall	80
Winter	36
Other	17



6. When you visit a park, what are the top three things you look for? (Check 3)

Restrooms	63
Play areas	43
Organized sports fields	29
Picnic and gathering spaces	30
Special event spaces	7
Rentable spaces	4
Indoor recreation facilities	5
Trails and walking/biking paths	45
Aquatics (pool/splashpad)	35
Tennis/pickleball courts	5
Basketball courts	4
Skate park	10
Dog exercise areas	13
Winter recreational facilities	13
Fishing or water access	8
Wooded or other natural areas	20
Other	2



# Public Input – W. McFarland Park

## Survey Results – What new facilities are needed in the Village?

- **Aquatics/Pool/Splashpad**
- **Centralized sports facilities/better soccer fields**
- **Trails/walking paths**
- **Improved skate park**
- **Restrooms**
- **Youth baseball fields**
- **Beach/boating access**

# Trends



# Establish Design Program for Each Park

## Example Elements:

- **Community Gathering Space**
- **Baseball Complex**
- **Aquatic Feature**
- **Parking**
- **Trails and Walking Paths**
- **Indoor Rental Space**

# Next Steps

---

- **Establish priorities for each site**
- **Find optimal configuration of puzzle pieces**

## McFarland Park Master Plan Study Stakeholder Interview Summary

September, 2020



### William McFarland Park

The consultant performed stakeholder interviews with the major users of William McFarland Park during August and September. The questions were assembled to determine how the existing park facilities serve their needs and what improvements would be beneficial to long term organization use and potential growth. The following summarizes these discussions.

#### Curling Club

Joel Dietz and Mandy Hampton

- The existing Curling facility has been in this location since the 90s. Prior locations included Demetral Field and Camp Randall.
- The club has finished the payments on the loan to the Village (99 year lease)
- the recent Olympics helped spur a growth in membership requests and overall interest in curling.
- General rule of thumb for facility membership is ~100/sheet.
- The current curling season is October – March
- There is desire to offer a 12 month facility, which will allow for more memberships and ice time.
- Memberships are the largest source of revenue.
- Club has done a study on where members are located and McFarland is central. They would prefer not to relocate to another site. This is due to the investment they have spent already and the geographic location is good.
- Current facility has 6 ice sheets, desire to 4-6 more. 6 additional was estimated to be \$7 million, 4 estimated at \$5.5 million. This would include improvements to the club house.
- The ice mechanical systems are located along the north face of the building, forcing any expansion to the west.
- 8 people to a sheet at one time (6x8=48), There are often an additional 48 in the club house waiting for their turn. This is compounded when groups come and go forcing the parking allocation to be higher.
- Additional parking will be needed, but could be shared with the Ice Arena if the layout works.

#### Hockey

Shaun O'Hearn

- The ice arena is operational all year and is at capacity
- There is desire for a second sheet of ice if possible
- Possible/probably location is on the west side of ex building and would replace the linear parking lot used for soccer (std size is 180x80)
- This park would be a good home for an outdoor ice sheet as many of the active skaters and people who maintain ice are onsite

- More active use fields for lacrosse, ultimate Frisbee and youth baseball diamonds are needed in the Village. Having one diamond here and one at Lewis is not enough to program. The diamond at this location is an odd size and should be relocated
- As a local business owner, he often hears comments regarding an aquatic facility of some type. McFarland Park is a possible location for this type of facility
- General comment regarding the Village and user groups reaching a written agreement for facility maintenance and upkeep. McFarland Park is an example of various groups using the same space with a lack of coordination efforts
- The new Community park could have restrooms, baseball, soccer/general use field, gathering spaces for families, trails, play areas, and shelters. The location will not be "remote" forever

#### McFarland Soccer Club

Ryan Amundson

- Approximately 700 families served by the soccer organization
- Season is April -June and Aug -early November
- Teams are run through MAYSA for tournaments
- Sat/Sun games (8 Am 5 PM), Mon-Thur practice (4-8pm)
- Ages range from Kindergarden through High School
- The largest population served are the older kids (12-16) which require the largest field size (100/120x60/80 yards)
- Currently the youngest players use the small lot owned by the Ice Arena (south end of park)
- Numbers how that soccer is growing in all age groups
- Would like to add 1-2 more large fields that can be subdivided for youth play
- The group currently rents space from Madison Parks for some games and practices
- The organization is in year 2 of a 20 year lease/loan on the shelter/restroom building.
- Possible additional fields if the parcel north of the park was acquired?
- They are very open and interested in moving soccer out of McFarland Park to the new Community Park. An arrangement would be needed to exit the current building lease etc and get a new facility built at the new site. This existing building is flexible and could be used for other community based use and rentals if not used for soccer.
- A support building would need to have restrooms, concessions, a meeting room, and gathering/open air space
- Parking is a source of frustration for the club. There have been conflicts with the Ice Arena in the past. The current parking is adequate when they can use the curling club parking lot. These seasons do not currently overlap.
- Would love lights and one turf field if possible

#### 4 Lakes Bocce Association

Don Peterson

- Don provided background information not only on Bocce, but on past park improvements from his time as administrator
- Curling Club built in 1997
- Baseball and skate park followed shortly after

- There has been no active management of passive open spaces in the Village until recent discussions
- McFarland Park has been filled with facilities without a full plan for the future
- Acquisition of the land to the north should be evaluated for park expansion
- The parcel has a nice woodlot that could serve as passive family recreation uses. This is not currently available in the park
- There is a buried limestone ridge underneath the curling club location
- The McFarland Family Festival has been on this site in previous years. There has been parking problems in some years.
- In one year, there was a conflict with the soccer club tournament
- The festival has also been held downtown, this location seemed to work well
- Bocce has been in the park for 10 years
- The complex is the only regulation court in the state
- Development of the complex has been member driven and the organization would prefer not to be relocated
- Leagues are held Monday -Thursday nights and weekday mornings
- The courts are open to the public other times
- The club would like to increase participation
- The skate park usage does not seem to conflict with the Bocce complex, but it is getting old and needs updating or relocation
- Possible future location should be more accessible for young users who don't need to rely on parents to drive them
- Given the current north Village location, it is possible/probable that more Madison residents use it than McFarland.
- The baseball diamond was shoehorned in and should be relocated to another site. It is not a conventional dimension

#### McFarland School District Community Recreation

Alisha Fix

- Alisha has been involved in the recreation and aquatics for the School District for 18 years
- A special needs park is a much needed asset in the Village open space system
- To better accommodate youth recreation activity programming and general facility availability to community members, she suggested the following items have high priority for development or consideration:
  - Pickleball Courts (cited as the number 1 requested facility by residents)
  - Concrete outdoor ping pong tables
  - Sand Volleyball courts
  - Gaga ball pits
  - Smaller ball diamonds to be used for whiffleball and kickball
  - Shelters with restrooms, rental space, drinking water, and equipment storage
  - Adequate parking for program users
  - Addition youth baseball fields
- Alisha expressed concern about potentially losing the diamond at William McFarland Park (due to Curling Club expansion plans). This field is used for youth baseball. If this field is removed for other park uses, they would need an alternate location and ideally would have two fields instead of one available. They currently also use Lewis, Brandt, and district fields for programming

- Baseball is the most popular sport MRAP (McFarland Recreation Activities & Play) offers with over 380 participants (across grade levels 4k-12th grade)
- The future community park would be an ideal place for a consolidated diamond complex

#### Community Park Neighboring Property Owner

Liza Lightfoot

- Liza owns the large property east of the Community Park site, her driveway is the common parcel boundary
- Her property is currently used as a nursery and landscaping company. A large portion of the property is forest and prairie landscape
- She feels that in general, Village parks should have more shelters and opportunities for informal gatherings
- There is a lack of “wild spaces” in the park system currently. A comprehensive community park should have activities and facilities for all ages and abilities
- Sustainable parks should be low maintenance, programmed with community group partnerships, and designed in harmony with adjacent properties
- She would like to see community gardening and landscape restoration projects involving the community members
- The new community park does not have many existing assets that should be preserved or protected as it is mainly agriculture land. There is an abandoned well on the east side of the property by her driveway
- She would like the new park to have trails for hiking, snowshoeing, etc
- Use of chemicals for large lawn areas should be minimized if possible

# William McFarland Park

110

Responses

04:11

Average time to complete

Closed

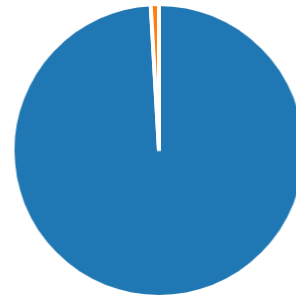
Status



[Ideas](#)

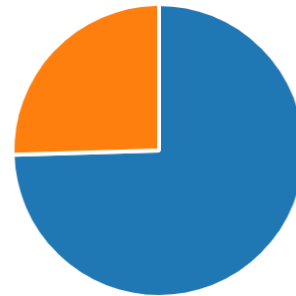
## 1. Are you a resident of McFarland?

Yes	109
No	1



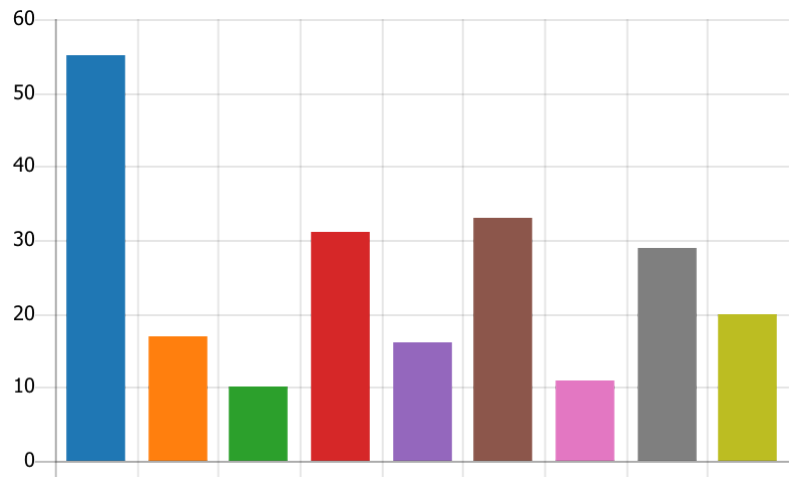
## 2. Do you or your family members use William McFarland Park?

Yes	82
No	28



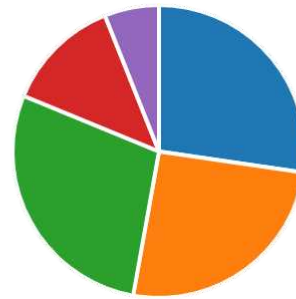
3. If you answered yes to question 2, please select the facilities you utilize: (Check all that apply)

● Soccer Fields	55
● Baseball Field	17
● Bocce	10
● Ice Arena	31
● Curling Club	16
● Skate Park	33
● Shelter Rental	11
● Playground	29
● Other	20



4. What Seasons do you use the park? (Check all that apply)

● Spring	77
● Summer	72
● Fall	80
● Winter	36
● Other	17



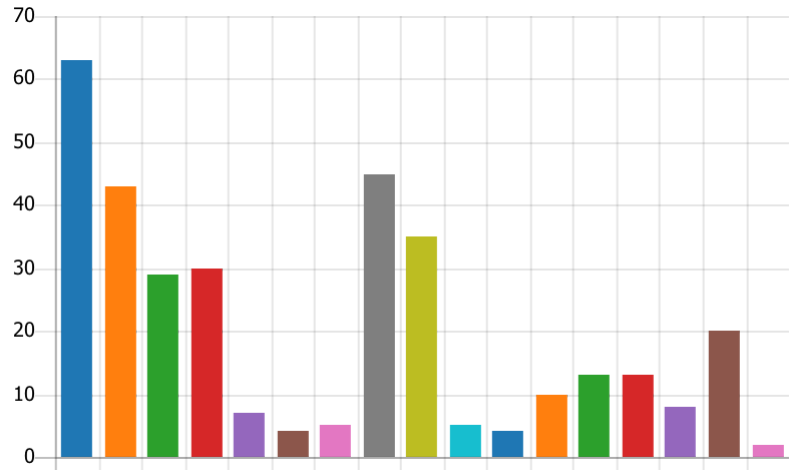
5. What new facilities would make this park more inviting to you or your family?

64  
Responses

Latest Responses  
"Handicap accessible options "

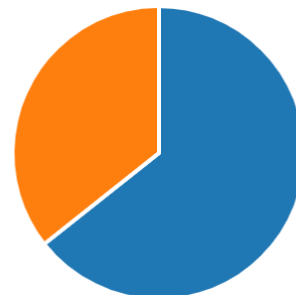
6. When you visit a park, what are the top three things you look for? (Check 3)

Restrooms	63
Play areas	43
Organized sports fields	29
Picnic and gathering spaces	30
Special event spaces	7
Rentable spaces	4
Indoor recreation facilities	5
Trails and walking/biking paths	45
Aquatics (pool/splashpad)	35
Tennis/pickleball courts	5
Basketball courts	4
Skate park	10
Dog exercise areas	13
Winter recreational facilities	13
Fishing or water access	8
Wooded or other natural areas	20
Other	2



7. Are there any unmet needs or insufficient facility types in McFarland for park users?

Yes	65
No	36



8. If you answered yes to question 7, what are they?

63  
Responses

Latest Responses  
 "More handicap accessible options"  
 "Outside pool and splash pad!!!"

9. What in your mind makes a park sustainable?

57

Responses

Latest Responses

*"GREEN SPACE"*

10. Can you provide examples of other great parks you have visited?

52

Responses

Latest Responses

*"Sigglekow Rd Park (Great for open green space versatility and woo..."*

*"Cottage Grove just built new splash pad next to their beautiful park..."*

# New Community Park

123

Responses

05:39

Average time to complete

Closed

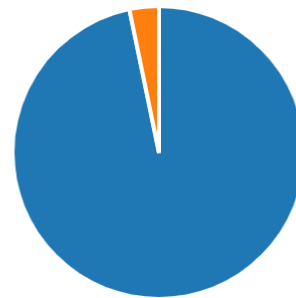
Status



Ideas

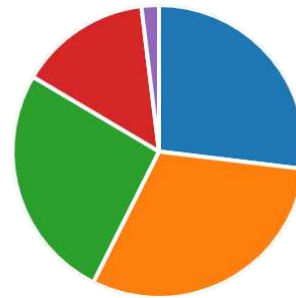
## 1. Are you a resident of McFarland?

<span style="color: blue;">●</span> Yes	119
<span style="color: orange;">●</span> No	4



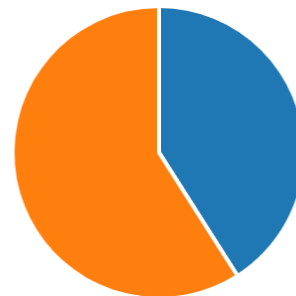
## 2. What seasons do you use the park? (Check all that apply)

<span style="color: blue;">●</span> Spring	98
<span style="color: orange;">●</span> Summer	111
<span style="color: green;">●</span> Fall	95
<span style="color: red;">●</span> Winter	53
<span style="color: purple;">●</span> Other	7



## 3. Are you aware of the location for the future Community Park?

<span style="color: blue;">●</span> Yes	50
<span style="color: orange;">●</span> No	72



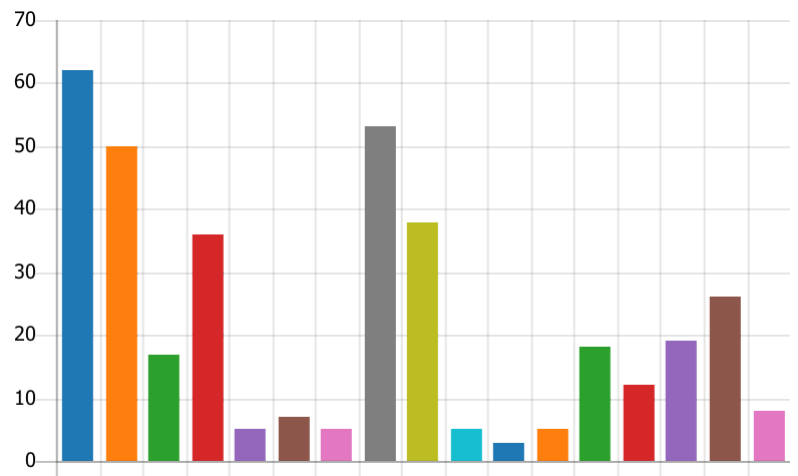
4. What new facilities would make this park more inviting to you or your family? (List your top 4)

78  
Responses

Latest Responses  
"Handicap accessible options"  
"Splash pad "

5. When you visit a park, what are the top three things you look for? (Check 3)

● Restrooms	62
● Play areas	50
● Organized sports fields	17
● Picnic and gathering spaces	36
● Special event spaces	5
● Rentable spaces	7
● Indoor recreation facilities	5
● Trails and walking/biking paths	53
● Aquatics (pool/splashpad)	38
● Tennis/pickleball courts	5
● Basketball courts	3
● Skate park	5
● Dog exercise areas	18
● Winter recreational facilities	12
● Fishing or water access	19
● Wooded or other natural areas	26
● Other	8



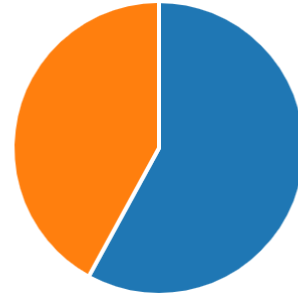
6. What recreational uses do you feel are unmet, or have insufficient facilities that could enhance the existing McFarland Park system if included in the new community scale park?

77  
Responses

Latest Responses  
"Pickelball Courts (this would be an ideal spot for them. Not other e..."  
"Splash pad"

7. Would you consider using this new community park for your sports organization?

● Yes 58  
● No 42



8. What in your mind makes a park sustainable?

56  
Responses

Latest Responses  
*"Green Space"*

9. Can you provide examples of other great parks you have visited?

43  
Responses

Latest Responses  
*"Siggelkow Road Park"*  
*"Cottage Grove Park and splash pad on Vilas"*

  
**VILLAGE OF  
McFarland**  
**SUMMARY SHEET**

**MEETING DATE:** Thursday, January 28, 2021

**SECTION:** Business

**DEPARTMENT:** Administration

**CONTACT:** Sayer Larson, Parks Superintendent

**AGENDA ITEM:** Discussion regarding small project planning within the park system.

**PREVIOUS ACTION:**

None.

**ISSUE SUMMARY:**

From time to time different opportunities develop within the parks system that are smaller in nature compared to larger park development projects we've worked on. A more recent example of this include discussion about the birding telescope in Lewis Park. There are likely to be multiple similar types of requests that also affect our operations and how we serve or maintain the parks. This item is presented for discussion amongst the group on how to address these things as they develop throughout the year.

**FINANCIAL/BUDGET IMPACT:**

None.

**VILLAGE PLAN REFERENCE:**

None.

**ORDINANCE REFERENCE:**

None.

**BOARD, COMMISSION OR COMMITTEE RECOMMENDATION:**

Presented for discussion.

**ATTACHMENTS:**

None

  
VILLAGE OF  
**McFarland**  
**SUMMARY SHEET**

**MEETING DATE:** Thursday, January 28, 2021

**SECTION:** Business

**DEPARTMENT:** Public Works

**CONTACT:** Sayer Larson, Parks Superintendent

**AGENDA ITEM:** Discussion regarding the development of future volunteer opportunities within the park system.

**PREVIOUS ACTION:**

None.

**ISSUE SUMMARY:**

This agenda item is presented to discuss opportunities to advance volunteerism within the park system. There are several initiatives undertaken past and present by the Parks Superintendent that are summarized within the packet. Committee members are encouraged to bring additional ideas to the discussion to see what else could possibly be pursued in the future. Additionally, we can also discuss possibility of creating an Adopt a Park program.

**FINANCIAL/BUDGET IMPACT:**

None.

**VILLAGE PLAN REFERENCE:**

None.

**ORDINANCE REFERENCE:**

None.

**BOARD, COMMISSION OR COMMITTEE RECOMMENDATION:**

Presented for discussion as listed.

**ATTACHMENTS:**

1. 01.28.2021 Volunteer Summary

## Volunteer summary to date

- Woodland restoration workdays
  - 8 workdays in January and February 2020
  - 1-6 volunteers, 1-3 staff (myself included in person leading)
  - 9-12, small break
  - Worked with Stephanie to advertise on Village social media
  
- Playground cleanup (weed pulling)
  - Two separate sign ups.
  - Worked with Katie and Stephanie for advertisement and signup.
  
- Hockey rink maintenance
  - Trying to develop relationship with MYHA (possibly more than just ice maint.)
  - Also working with Stephanie to advertise on Village social media.
  
- Boy Scouts
  - In contact with local troop to develop projects.
  - Service hours. Provide opportunities for park clean up. Other opportunities include fire hydrant shoveling as well as assisting senior outreach with snow removal.

## **PARKS, RECREATION & NATURAL RESOURCES COMMITTEE**

**January 28, 2020**

### **Parks Superintendent Report - January 2020**

The following is information concerning events and activities of the Parks Department for the previous month. This information is provided in brief to provide an overview of the highlights.

#### **Maintenance Operations**

Forestry operations, ice rink maintenance and snow removal are primary.

#### **Tree City and Bird City**

Applications have been submitted for 2020.

#### **Parks Master Signs**

Signs are currently being replaced. Storing old master signs at DPW. Thoughts/ideas on repurposing old master signs?

#### **Volunteering Parks**

Currently working with local Boy Scout to update a portion of the trail system created from Marsh Woods Park to Indian Mounds Conservation Park.

Working with MYHA to assist with ice maintenance at Lewis park.

#### **Dog Park Expansion / Disc Golf Update**

Dog park expansion update, dormant seeding completed in November. New fence boundary marked, obtaining quotes for install in February. Disc golf update, contractor for concrete pads secured for spring install. We will secure materials needed to complete project over the winter for spring install.

#### **Facility Update**

Only facility open is Lewis exterior restroom. Enclosed shelters remain closed and open-air shelters posted with mask requirement signage.

#### **Construction Update**

Dog park shelter, major work is complete. On finishing aspects. Dog park fencing/gates have been changed to all 48", large area gates still need adjustment. Parking lot now open for park users.

McDaniel open-air almost complete, waiting on power supply. McDaniel restroom facility, major work complete. Finishing ceilings then moving onto finishing aspects.

Please note epoxy flooring will be completed in spring.

#### **Meetings/Trainings/Seminars**

Attending virtual WPRA and other local parks meetings to stay updated on the COVID-19 pandemic as it relates to parks and facilities. In process of gaining certified playground safety inspector certification.